

2015 Loveland Agri Products Trial Data

Adjuvants with Axial (Pinoxaden + Cloquintocet-mexyl)

Wheat - Temora, NSW

Lov15_23

Trial Setup

- Fully randomised & replicated plot work – 4 replicates
- Plot size = 10m X 1.7m
- Treatments applied – Axial (Pinoxaden + Cloquintocet-mexyl)
- Spraying Date – 7th July 2015
- Crop Growth Stage – Z 13 – 22
- Target Pest – Annual Ryegrass

Spraying Date	7th July 2015
Site	Temora Research Station
Variety	Suntop Wheat @ 60kg/ha
Protocol	Axial +/- Liberate, Adigor, MSO
GSP	Axial + Adigor

Trial Protocol

Treatment #	Treatment	Applied Rate
T1	Axial + Liberate	300 ml/ha + 0.5%
T2	Axial + Adigor	300 ml/ha + 0.5%
T3	Axial + MSO Leci Tech	300 ml/ha + 0.5%
T4	Untreated	-----

Axial - 100 g/L Pinoxaden + 25 g/L Cloquintocet-mexyl

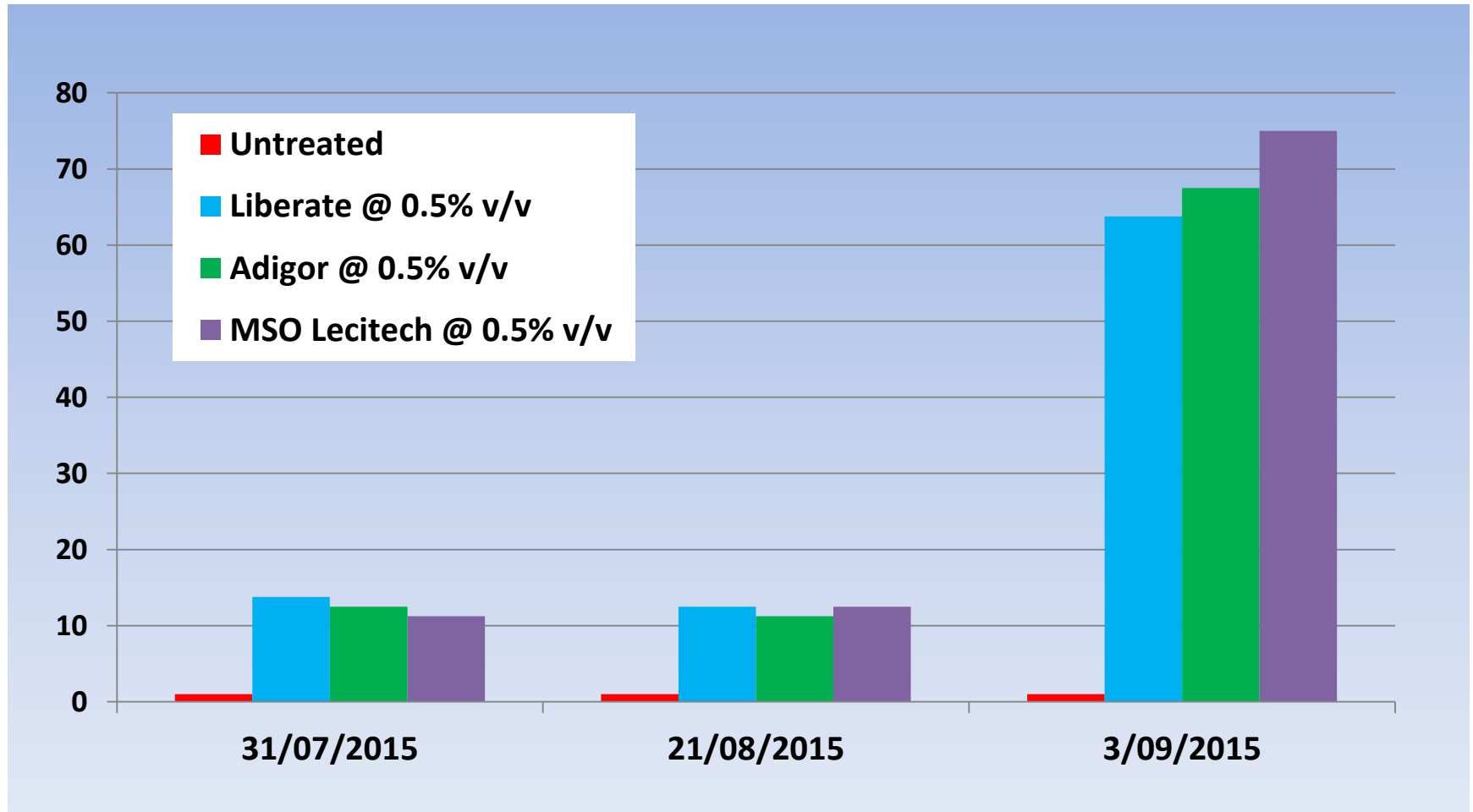
Biomass and Phytotoxicity

Treatment	Rate/ha	Phytotoxicity	Biomass Reduction
Axial + Liberate	300 ml/ha + 0.5%	0	0
Axial + Adigor	300 ml/ha + 0.5%	0	0
Axial + MSO Leci Tech	300 ml/ha + 0.5%	0	0
Untreated / Control	----	0	0

ARG Plant Death %

Treatment	Rate/ha	24 DAA	45 DAA	59 DAA
Axial + Liberate	300 ml/ha + 0.5%	12.50	13.75	63.75
Axial + Adigor	300 ml/ha + 0.5%	11.25	12.50	67.50
Axial + MSO Leci Tech	300 ml/ha + 0.5%	12.50	11.25	75.00
Untreated / Control	----	0.00	0.00	0.00
	LSD (P=.05)	5.032	5.162	17.595
	CV	34.71	34.43	21.33

ARG Plant Death %



LSD (P=.05) = 17.595 CV = 21.33

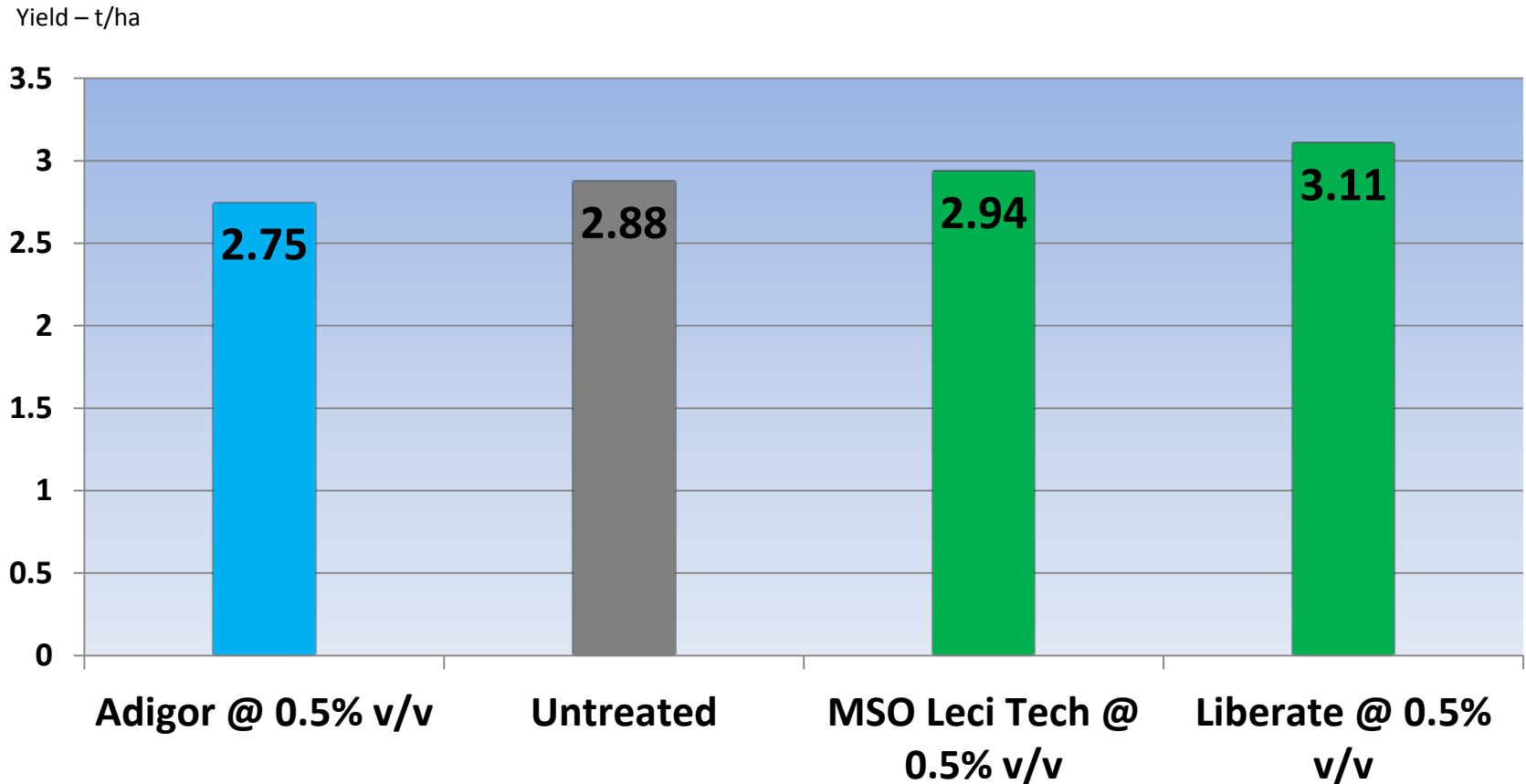
Wheat Yield - t/ha

Treatment	Treatment	Rate/ha	Yield T/ha
T1	Axial + Liberate	300 ml/ha + 0.5%	3.11
T2	Axial + Adigor	300 ml/ha + 0.5%	2.75
T3	Axial + MSO Leci Tech	300 ml/ha + 0.5%	2.94
T4	Untreated / Control	----	2.88

LSD (P=.05) = 0.261 CV = 5.6

2015 Trial Data

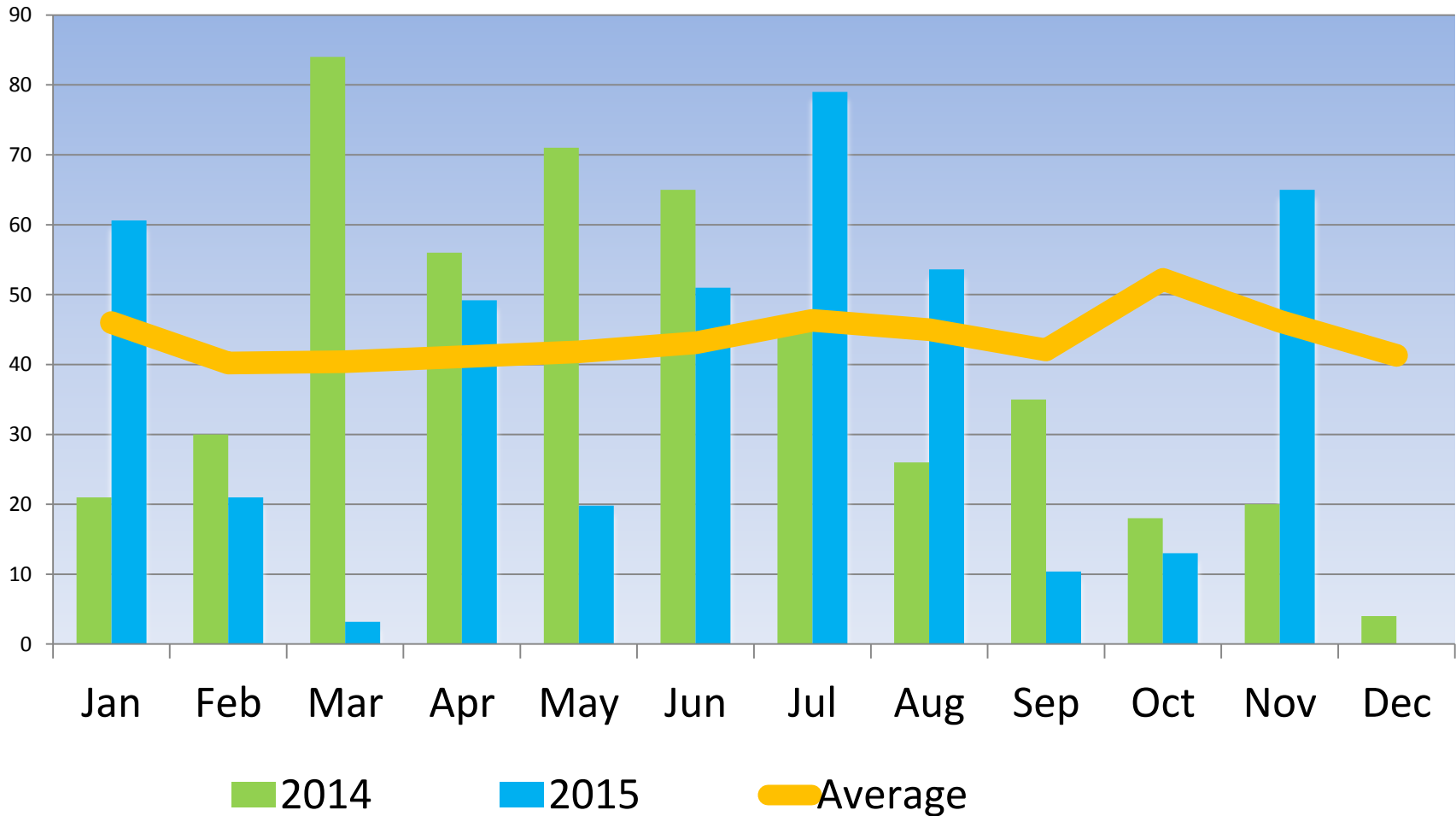
Wheat Yield – t/ha



LSD (P=.05) = 0.261 CV = 5.6

2015 Trial Data

Temora Research Station - Rainfall



Conclusions

- No Phytotoxicity observed.
- No biomass reduction observed.
- MSO had the highest plant death for ARG.
- Liberate had the fastest brownout after 21 days.
- ARG slow to die due to cold conditions, treatments applied following a series of heavy frosts.