

2015 Loveland Agri Products Trial Data

Adjuvants with Atlantis (Mesosulfuron-Methyl 30g/L)

Wheat - Temora, NSW

Lov15_21

Trial Setup

- Fully randomised & replicated plot work – 4 replicates
- Plot size = 10m X 1.7m
- Treatments applied – Atlantis (Mesosulfuron-Methyl 30g/L)
- Spraying Date – 7th July 2015
- Crop Growth Stage – Z 13 – 22
- Target Pest – Annual Ryegrass, Vol. Lupin

Spraying Date	7th July 2015
Site	Temora Research Station
Variety	Suntop Wheat @ 60kg/ha
Protocol	Atlantis +/- Liberate, Hasten, MSO, BS 1000.
GSP	Atlantis + BS1000 or Hasten

Trial Protocol

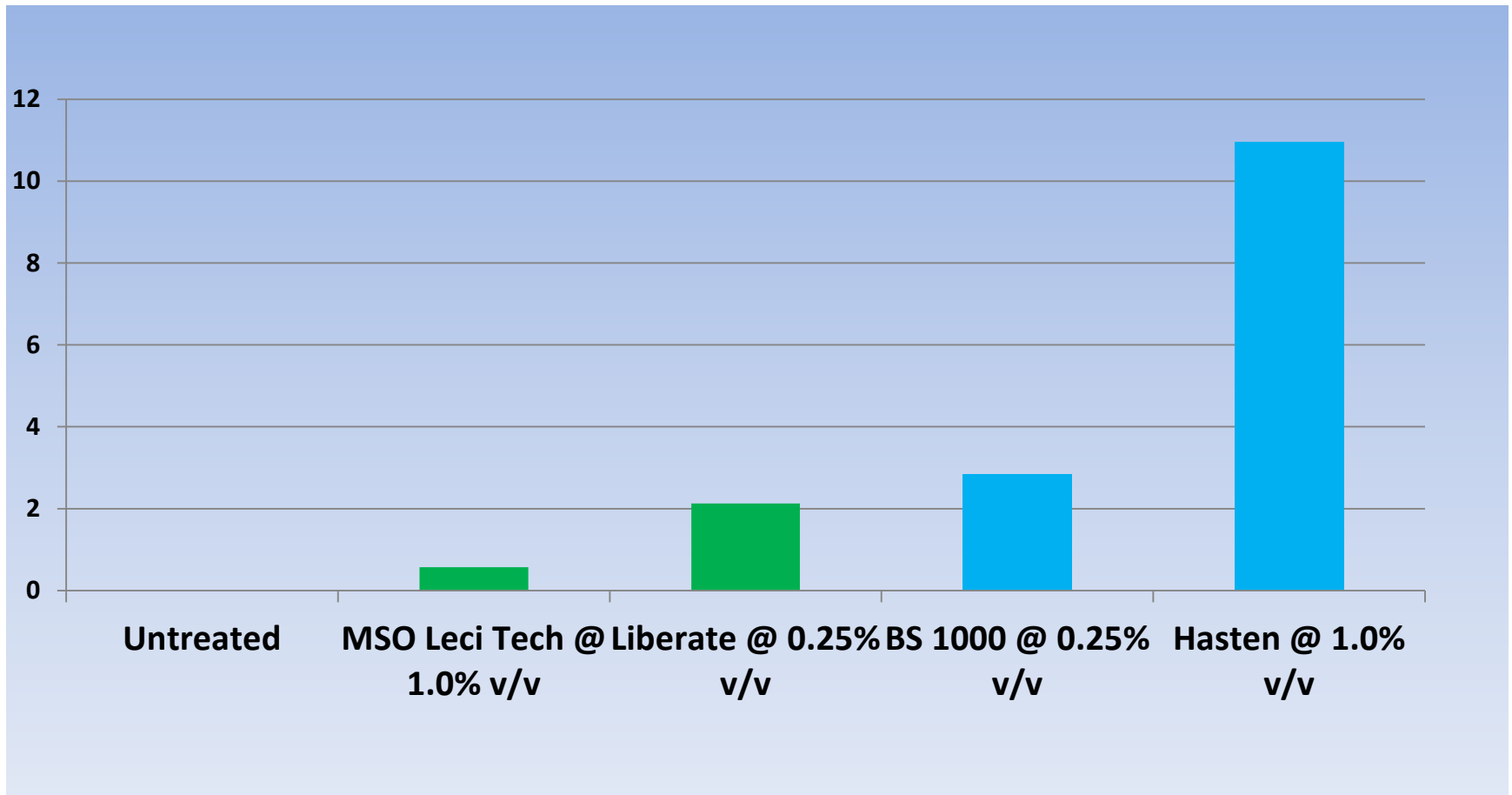
Treatment #	Treatment	Applied Rate
T1	Untreated	----
T2	Atlantis + Liberate	330 ml/ha + 0.25%
T3	Atlantis + Hasten	330 ml/ha + 1.0%
T4	Atlantis + MSO Leci Tech	330 ml/ha + 1.0%
T5	Atlantis + BS 1000	330 ml/ha + 0.25%

Atlantis - 30 g / L Mesosulfuron - Methyl

Crop Biomass Reduction

Treatment	Rate/ha	17 DAA	24 DAA	45 DAA	59 DAA
Untreated Control	--	-	0	0	0
Liberate	0.5%	-	2.13	0	0
Hasten	1.0%	-	10.95	0	0
MSO Leci Tech	1.0%	-	0.57	0	0
BS 1000	0.25%	-	2.83	0	0

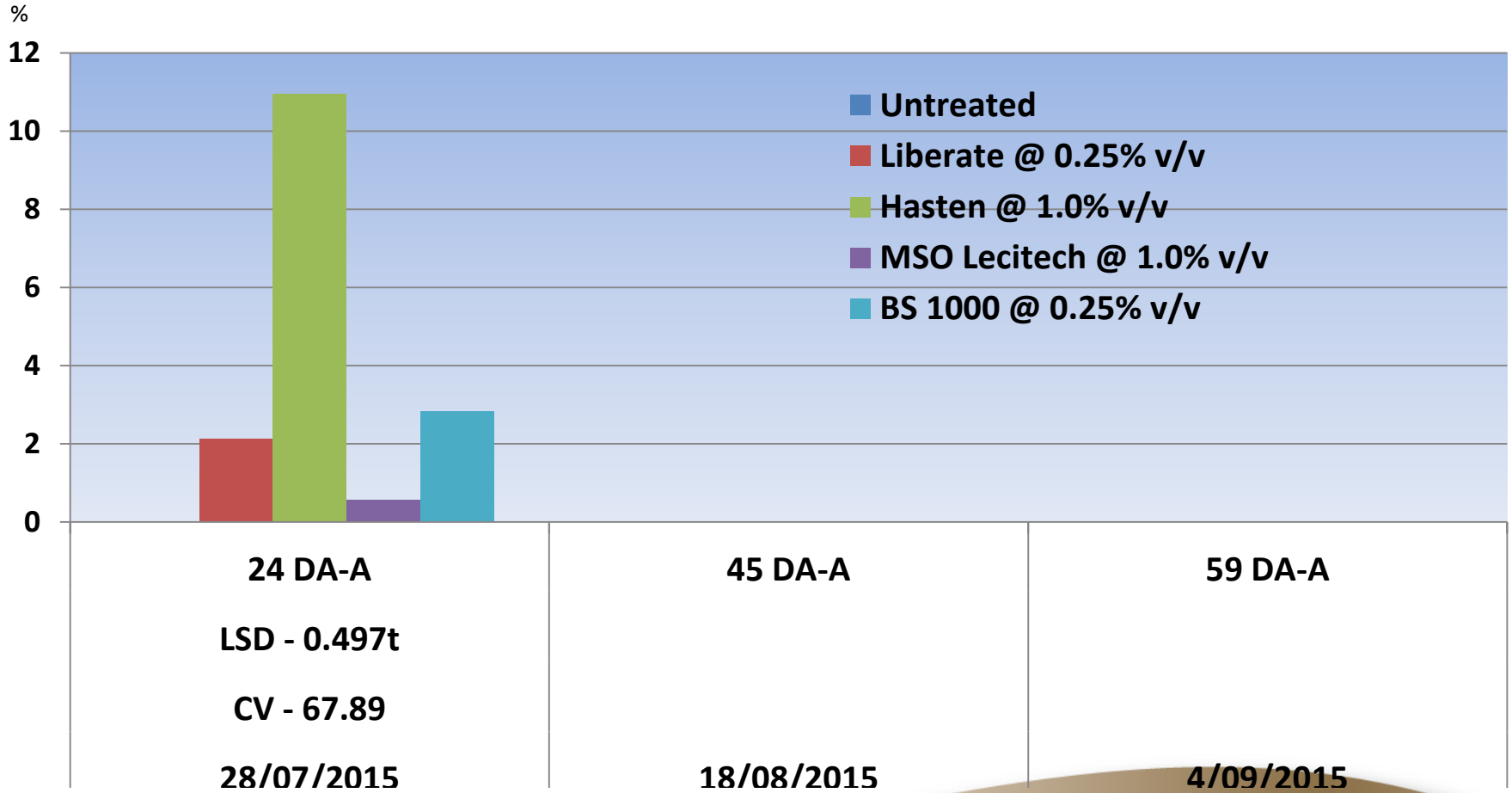
Crop Biomass Reduction % - 24 DAA



Crop Phytotoxicity %

Treatment	Rate/ha	24 DAA	45 DAA	59 DAA
Untreated Control	--	0	0	0
Liberate	0.5%	2.13	0	0
Hasten	1.0%	10.95	0	0
MSO Leci Tech	1.0%	0.57	0	0
BS 1000	0.25%	2.83	0	0
	LSD (P=.05)	0.497		
	CV	67.89		

Crop Phytotoxicity %

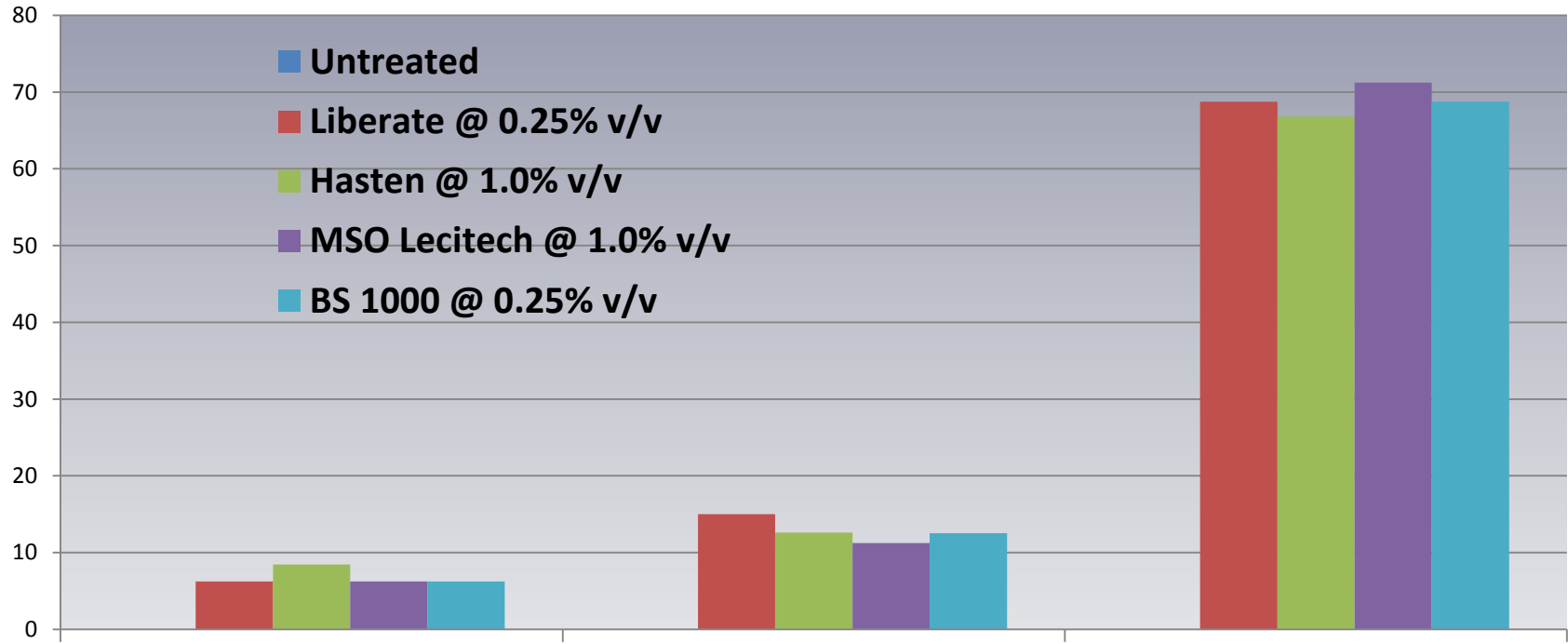


Control % - ARG

Treatment	Rate/ha	24 DAA	45 DAA	59 DAA
Untreated Control	--	0	0	0
Liberate	0.5%	6.25	15	68.75
Hasten	1.0%	8.44	12.6	66.81
MSO Leci Tech	1.0%	6.25	11.25	71.25
BS 1000	0.25%	6.25	12.5	68.75
	LSD (P=.05)	3.477	5.331	8.832
	CV	21.75	62.99	7.86

Control % - ARG

% control



24 DA-A

45 DA-A

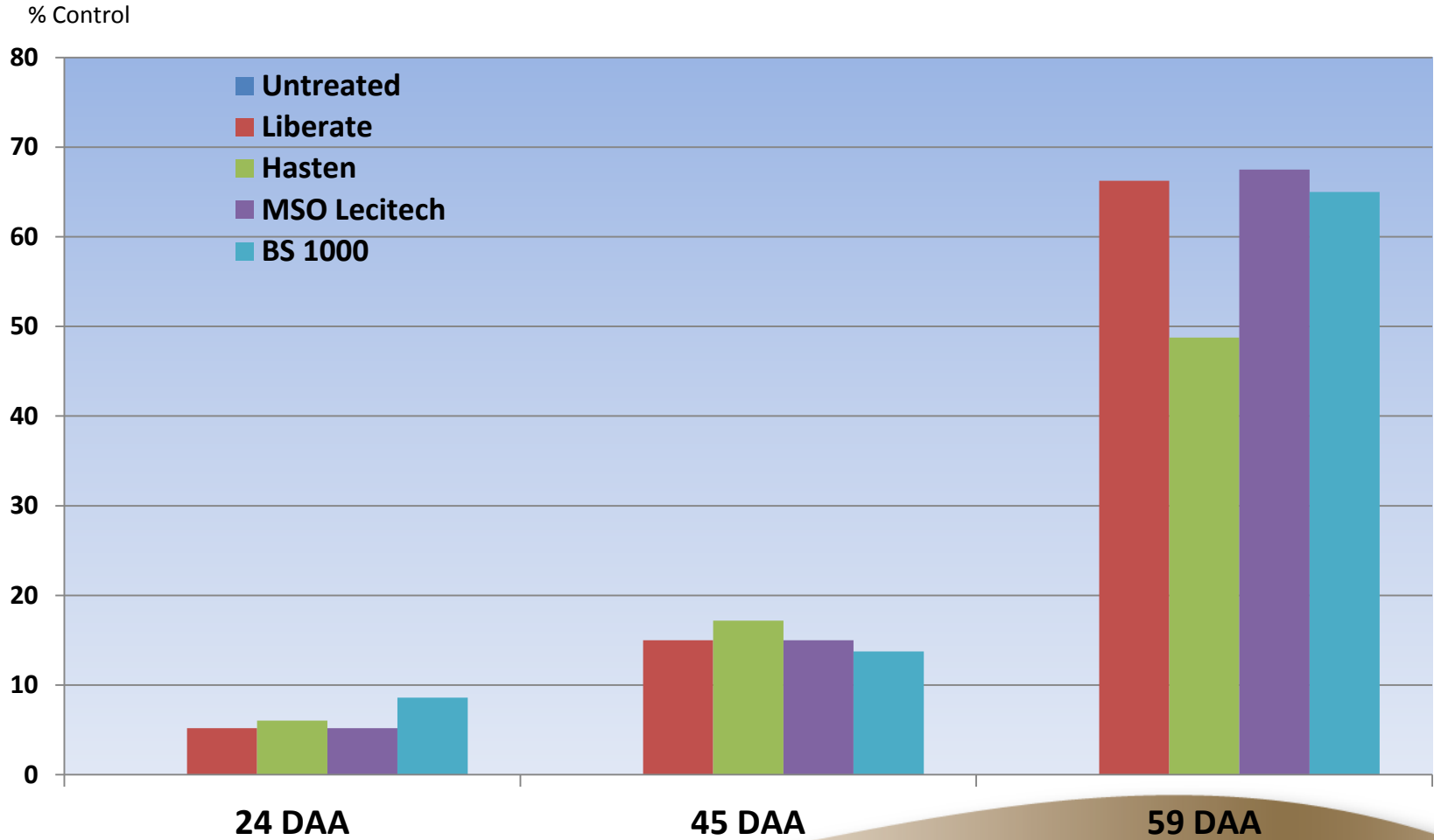
59 DA-A

LSD (P=.05)	3.477	5.331	8.832
CV	21.75	62.99	7.86

Control % - Lupin

Treatment	Rate/ha	24 DAA	45 DAA	59 DAA
Untreated Control	--	0	0	0
Liberate	0.5%	5.2	15	66.3
Hasten	1.0%	6.0	17.2	48.8
MSO Leci Tech	1.0%	5.2	15	67.5
BS 1000	0.25%	8.6	13.8	65
	LSD (P=.05)	5.331	3.477	8.832
	CV	62.99	21.75	7.86

Control % - Lupin



2015 Trial Data

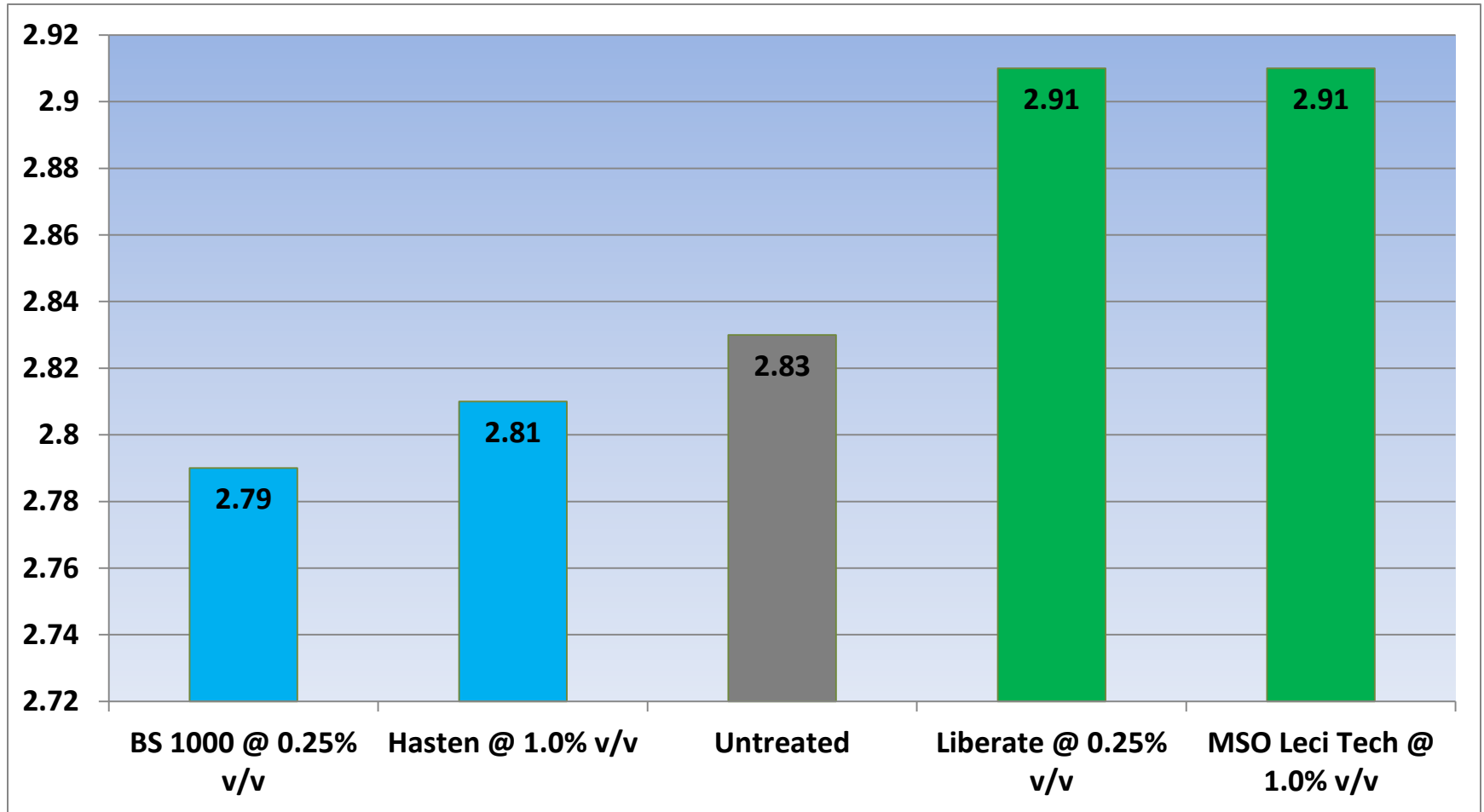
Wheat Yield - t/ha

Treatment #	Treatment	Rate/ha	Yield t/ha
T1	Untreated	----	2.83
T2	Atlantis + Liberate	330 ml/ha + 0.25%	2.91
T3	Atlantis + Hasten	330 ml/ha + 1.0%	2.81
T4	Atlantis + MSO Leci Tech	330 ml/ha + 1.0%	2.91
T5	Atlantis + BS 1000	330 ml/ha + 0.25%	2.79

LSD (P=.05) = 0.467 CV = 10.65

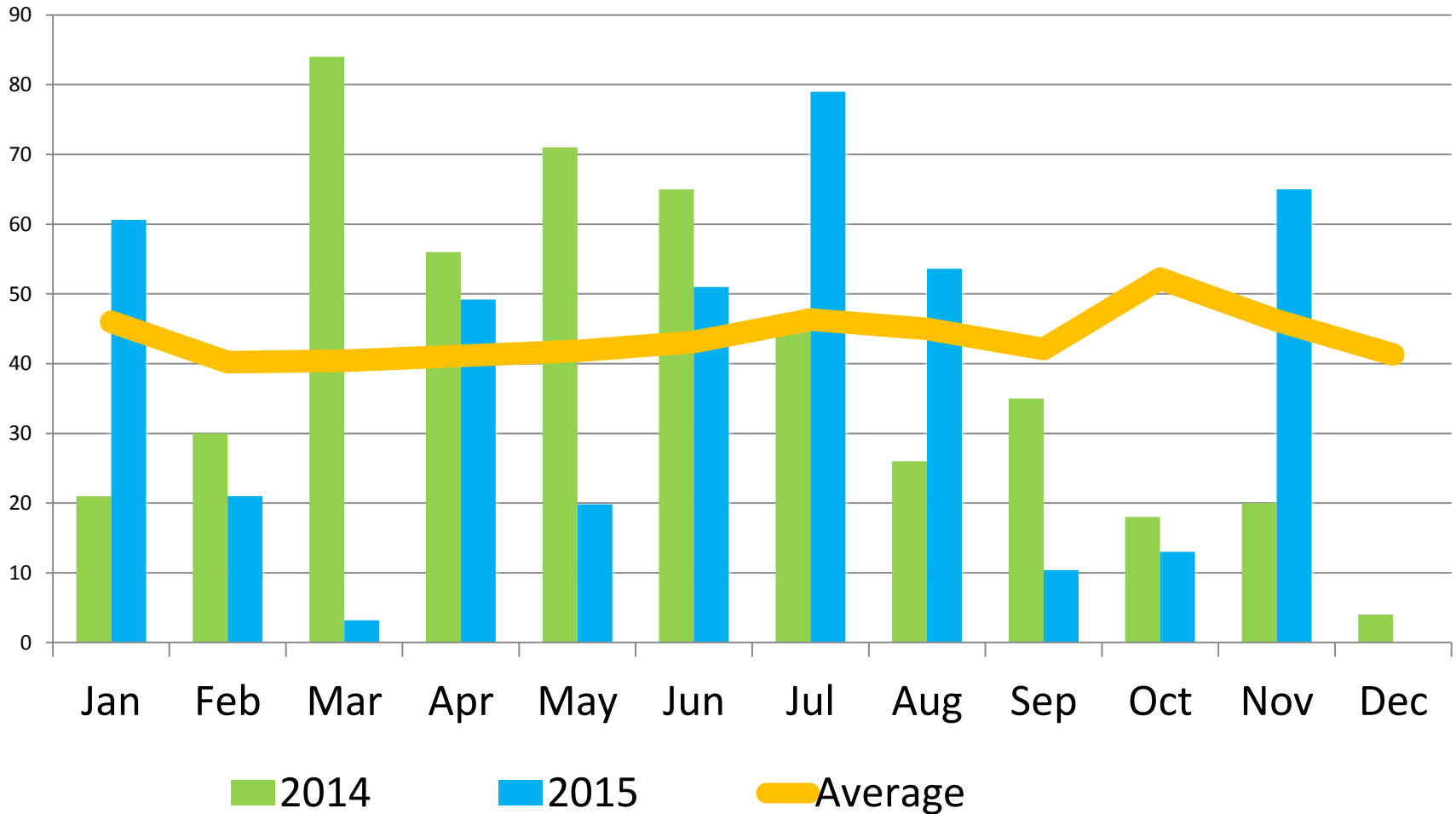
2015 Trial Data

Wheat Yield – t/ha



LSD (P=.05) = 0.467 CV = 10.65

Temora Research Station - Rainfall



Conclusions

- Hasten showed significant Phytotoxicity @ 24 DAA, but grew out of it later in the season.
- Hasten had the highest biomass reduction @ 11%, with Liberate and MSO lower than 2%.
- Atlantis was very slow in controlling the Annual Ryegrass, due to cold weather.
- Hasten did not control Lupins nearly as well as the others.