

2014 Loveland Agri Products Trial Data

Awaken Foliar - Wheat
York, WA

Trial Setup

- Fully randomised & replicated plot work – 6 replicates
- Plot size = 2.5 m X 10 m

Planting date	22/05/2014
Site	York, WA
Variety	Calingiri @ 80 kg/ha
GSP	K-Till Mn 120 kg/ha + Urea 125 kg/ha

Trial Protocol

Treatment	Rate/ha	Timing
GSP	----	----
GSP + Awaken	1.2 L	Z15-22
GSP + Awaken	2.4 L	Z15-22

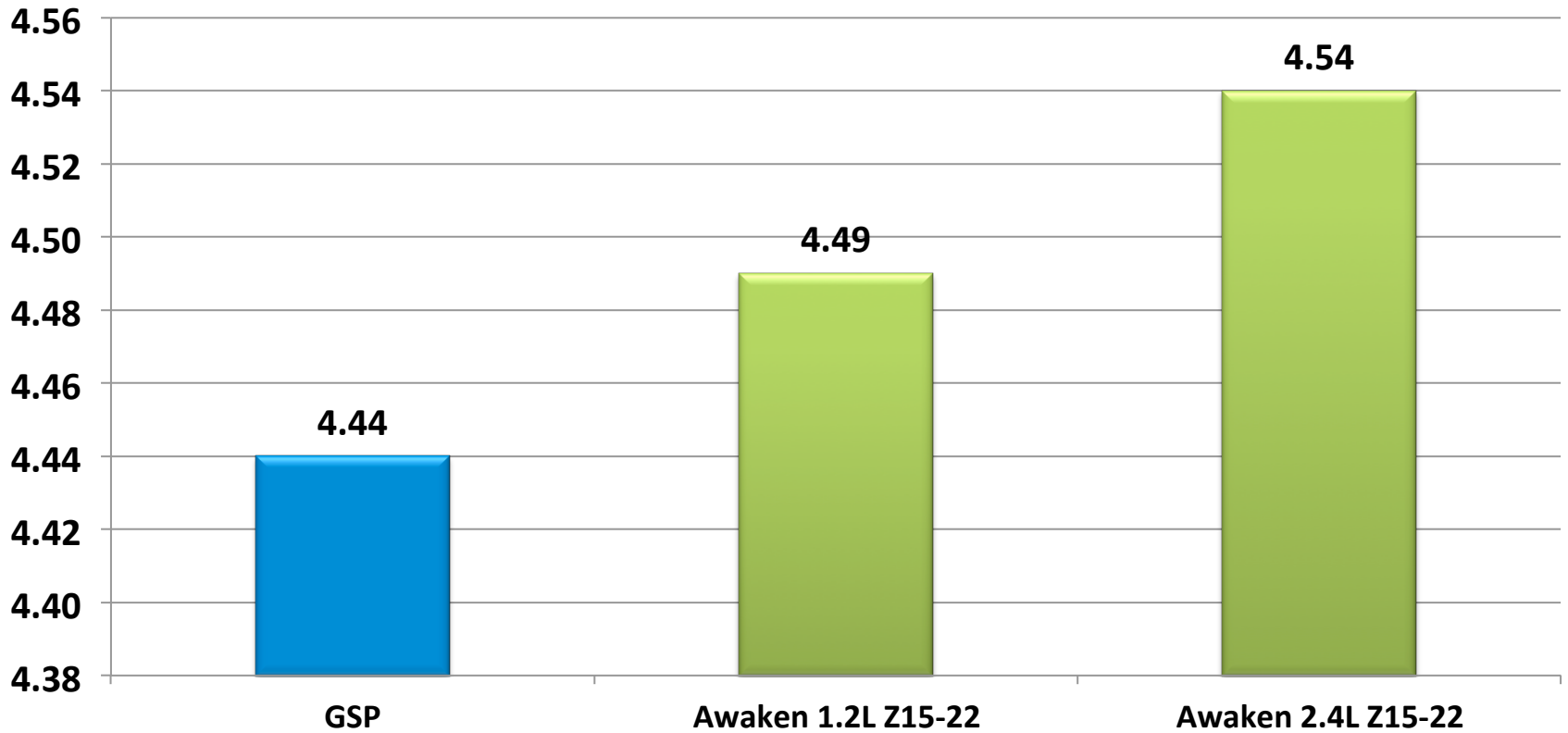
Awaken: 20-0-2 + micronutrients w/v

Wheat Yield - T/ha

Treatment	Rate/ha	Yield T/ha	Protein %
GSP	----	4.44	9.1
GSP + Awaken	1.2 L	4.49	9.2
GSP + Awaken	2.4 L	4.54	9.1

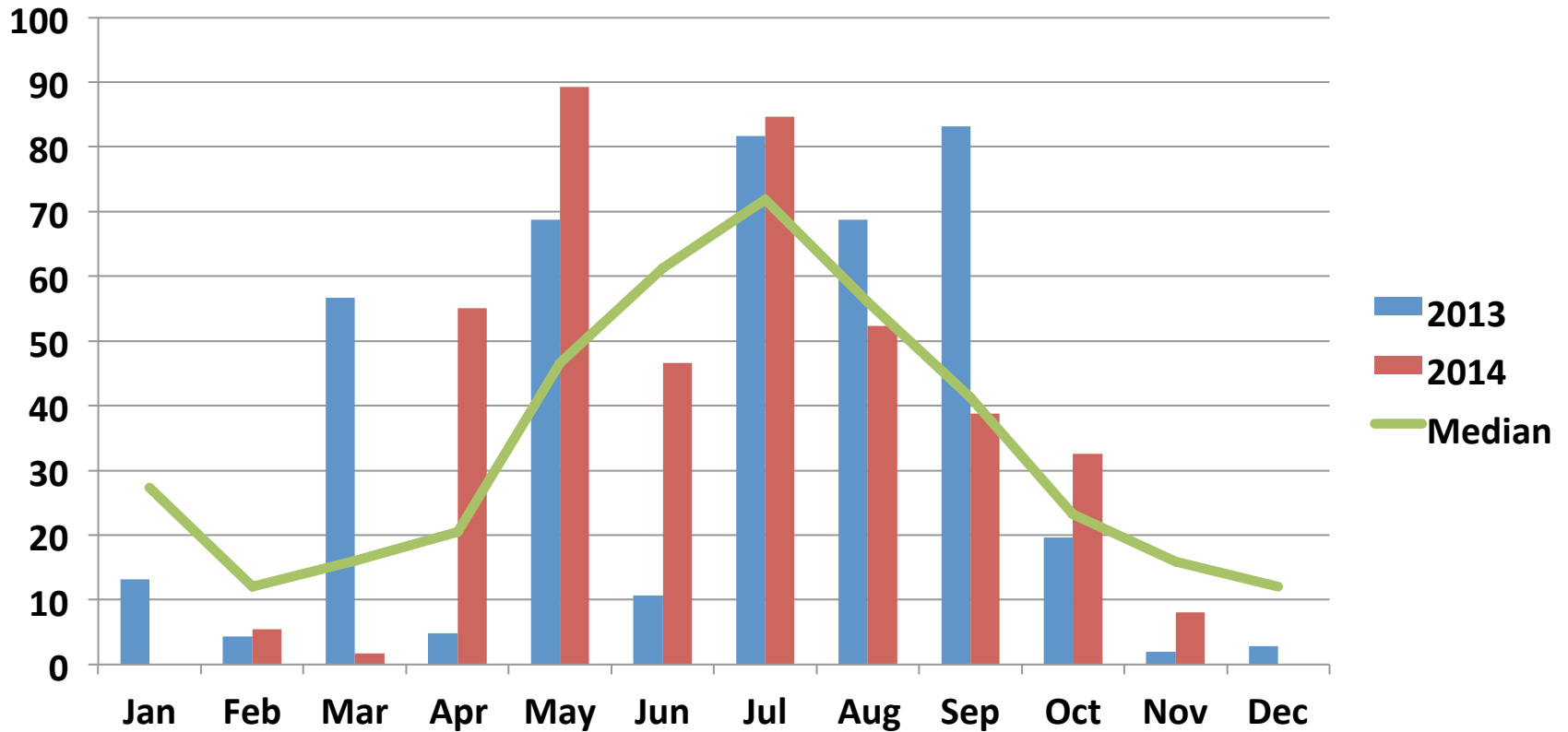
LSD (P=.05) = 0.384 CV = 6.6

Wheat Yield - T/Ha



LSD (P=.05) = 0.384 CV = 6.6

York - Rainfall



Conclusions

- In this trial both rates of Awaken applied foliar showed an increase in yield when applied over and above the grower standard practice.
- This trend has been seen in wheat in previous years over a number of trials in other geographical areas of Australia.
- Protein levels for all treatments were similar.