

2014 Loveland Agri Products Trial Data

Basis Trial - Wheat
York, WA

Trial Setup

- Fully randomised & replicated plot work – 18 replicates
- Plot size = 2.5 m X 10 m

Planting date	27/05/2014
Site	York, WA
Variety	Mace @ 80 kg/ha
GSP	K-Till Mn 120 kg/ha + Urea 120 kg/ha

Trial Protocol

Treatment	Rate/ha	Timing
Nil Fertiliser	----	----
GSP	120 kg	Planting
GSP + Basis	120 kg + 4L/T	Planting

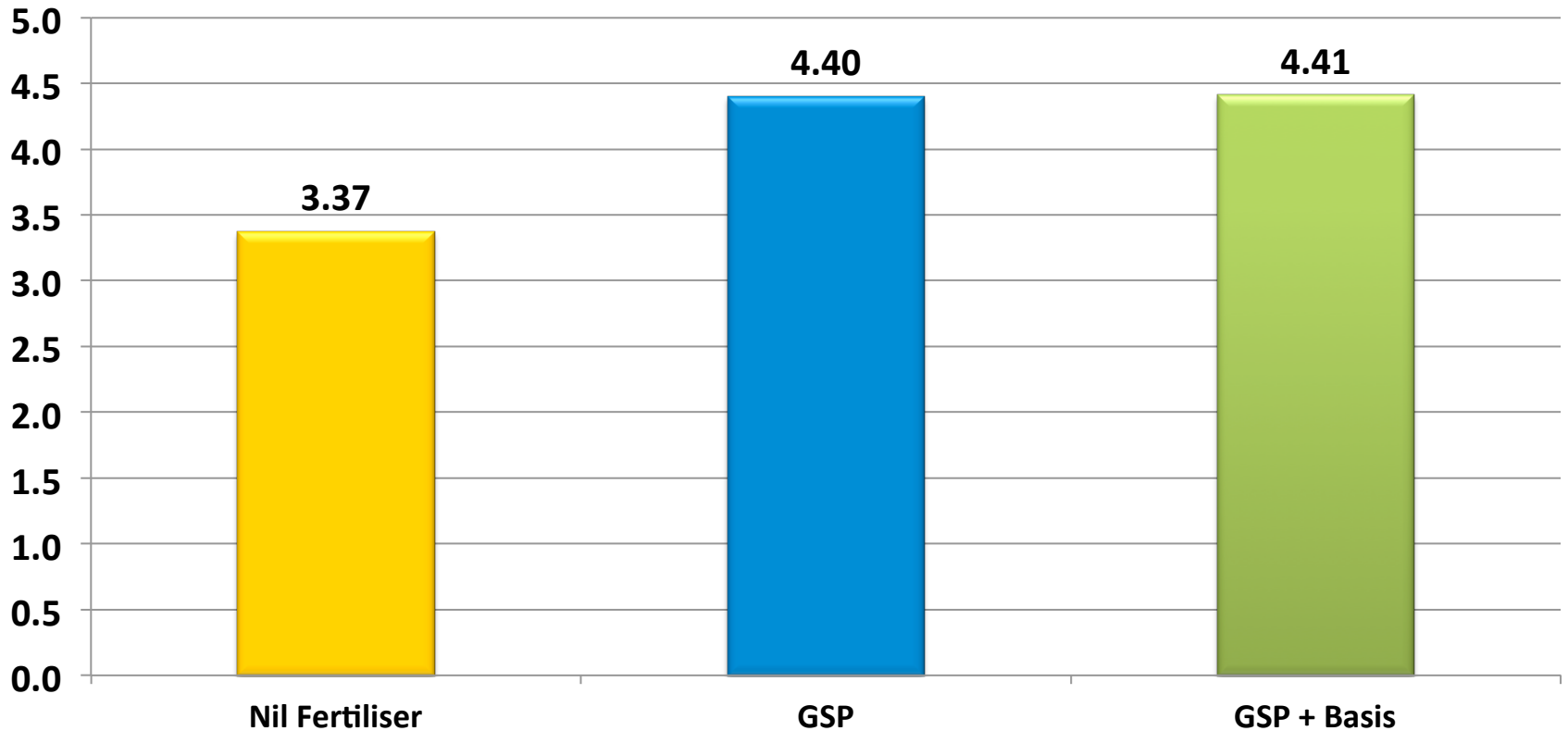
Basis: 3-0-0 w/v

Wheat Yield - T/ha

Treatment	Rate/ha	Yield T/ha	Protein %
Nil Fertiliser	----	3.37	10.9
GSP	120 kg	4.40	10.6
GSP + Basis	120 kg + 4L/T	4.41	10.4

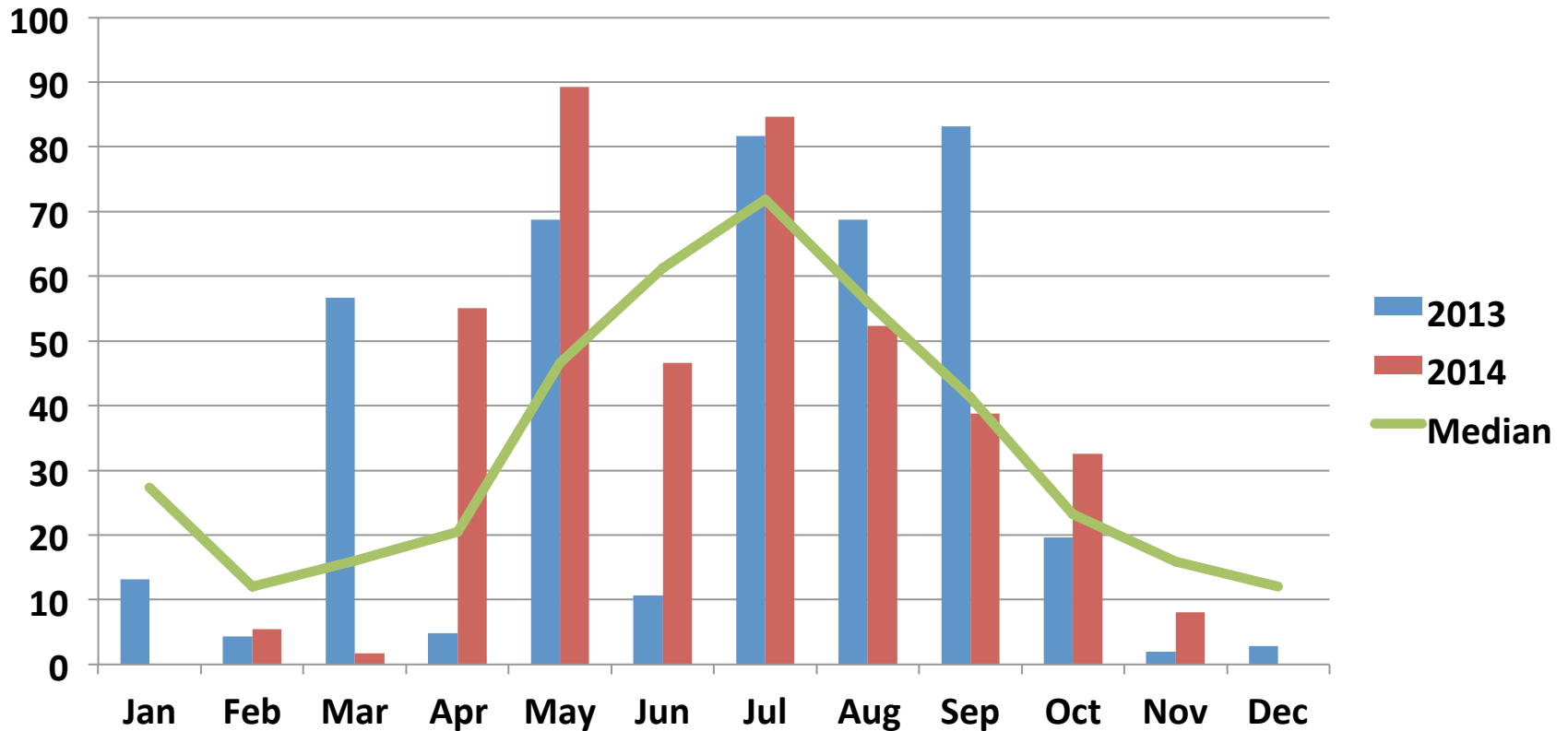
LSD (P=.05) = 0.148 CV = 5.4

Wheat Yield - T/Ha



LSD (P=.05) = 0.148 CV = 5.4

York – Rainfall (mm)



Conclusions

- Although there were noticeable visual differences in this trial throughout the growing season when comparing treatments this did not equate to a yield increase for Basis when comparing it to the grower standard practice.
- Further work on Basis will be required in WA in 2015 and beyond as it is difficult to draw any conclusions from only two replicated trials in wheat.