

2014 Loveland Agri Products Trial Data

Black Label Cereal foliar - Wheat
York, WA

Trial Setup

- Fully randomised & replicated plot work – 6 replicates
- Plot size = 2.5 m X 10 m

Planting date	22/05/2014
Site	York, WA
Variety	Calingiri @ 80 kg/ha
GSP	K-Till Mn 120 kg/ha + Urea 125 kg/ha

Trial Protocol

Treatment	Rate/ha	Timing
GSP	----	----
GSP + Black Label Cereal	4 L	Z15-22
GSP + Black Label Cereal	8 L	Z15-22
GSP + Black Label Cereal	8 L + 8 L	Z15-22 + Z33
GSP + Black Label Cereal	10 L	Z15-22
GSP + Black Label Cereal	20 L	Z15-22
GSP + Black Label Cereal	40 L	Z15-22

Note: Liberate @ 250mL/100L water, applied with all treatments.

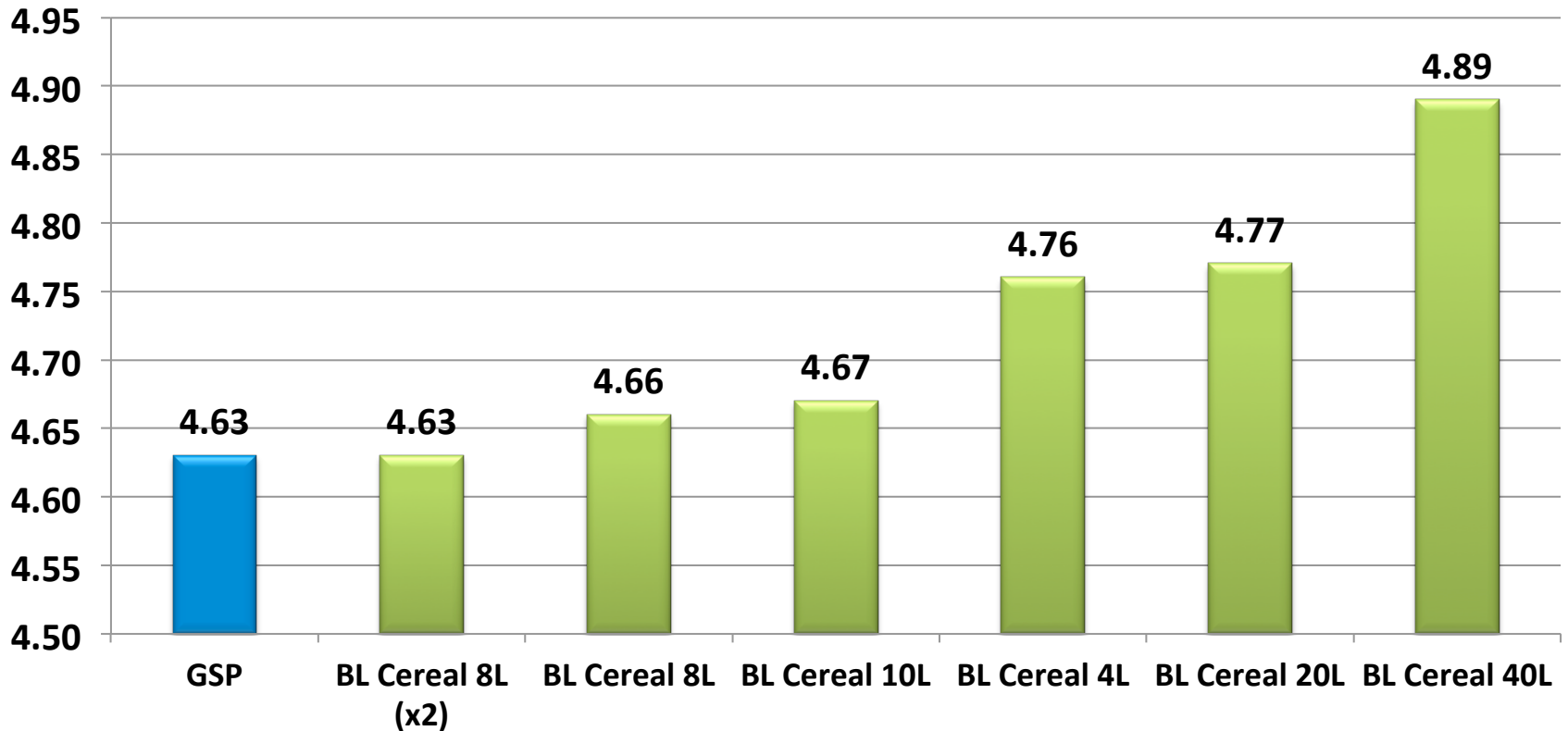
Black Label Cereal: 5-10-7, Cu 1 + Zn 0.4 w/v

Wheat Yield - T/ha

Treatment	Rate/ha	Yield T/ha	Protein %
GSP	----	4.63	9.1
GSP + Black Label Cereal Z15-22	4 L	4.76	9.2
GSP + Black Label Cereal Z15-22	8 L	4.66	9.0
GSP + Black Label Cereal Z15-22 + Z33	8 L + 8 L	4.63	9.2
GSP + Black Label Cereal Z15-22	10 L	4.67	9.1
GSP + Black Label Cereal Z15-22	20 L	4.77	9.2
GSP + Black Label Cereal Z15-22	40 L	4.89	9.1

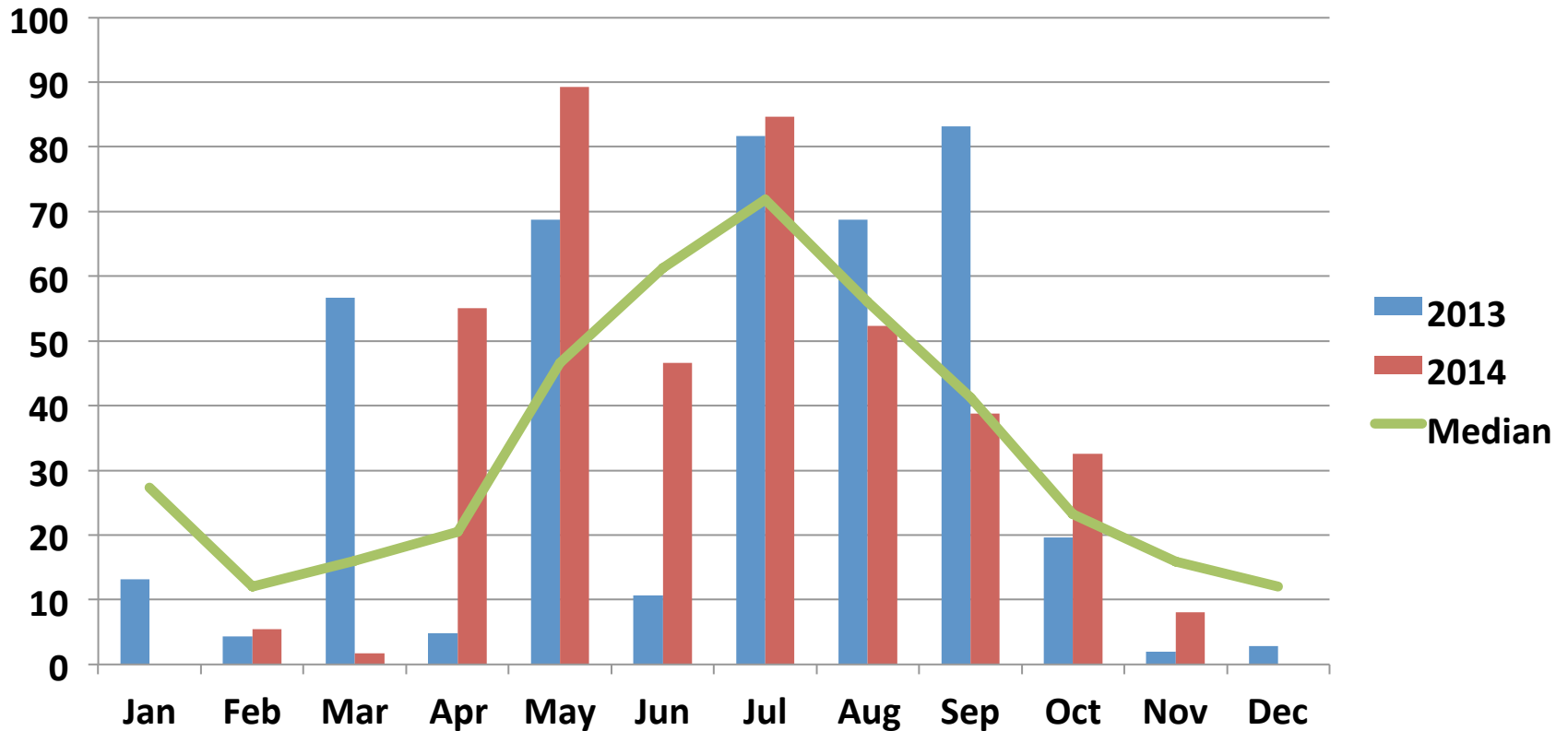
LSD (P=.05) = 0.255 CV = 4.6

Wheat Yield - T/Ha



LSD (P=.05) = 0.255 CV = 4.6

York – Rainfall (mm)



Conclusions

- Foliar applications of Black Label Cereal have shown a trend towards increasing yield over the GSP for most of the rates tested.
- The 40L/ha rate of Black Label Cereal has provided a statistical significant result for yield compared to the GSP.
- While there were positive yield increases achieved with the higher rates tested, the most economic rate response in terms of ROI has come from the 4L/ha rate. This has also been the case in other replicated trials conducted in 2014.