

2014 Loveland Agri Products Trial Data

Black Label Cereal (In-Furrow) - Wheat
York, WA

Trial Setup

- Fully randomised & replicated plot work – 6 replicates
- Plot size = 2.5 m X 10 m

Planting date	27/05/2014
Site	York, WA
Variety	Mace @ 80 kg/ha
GSP	K-Till Mn 120 kg/ha + Urea 120 kg/ha

Trial Protocol

Treatment	Rate/ha	Timing
GSP	----	----
GSP + Black Label Cereal	10 L	In-furrow at planting
GSP + Black Label Cereal	20 L	In-furrow at planting
GSP + Black Label Cereal	30 L	In-furrow at planting
GSP + Black Label Cereal	40 L	In-furrow at planting
GSP + Black Label Cereal	50 L	In-furrow at planting

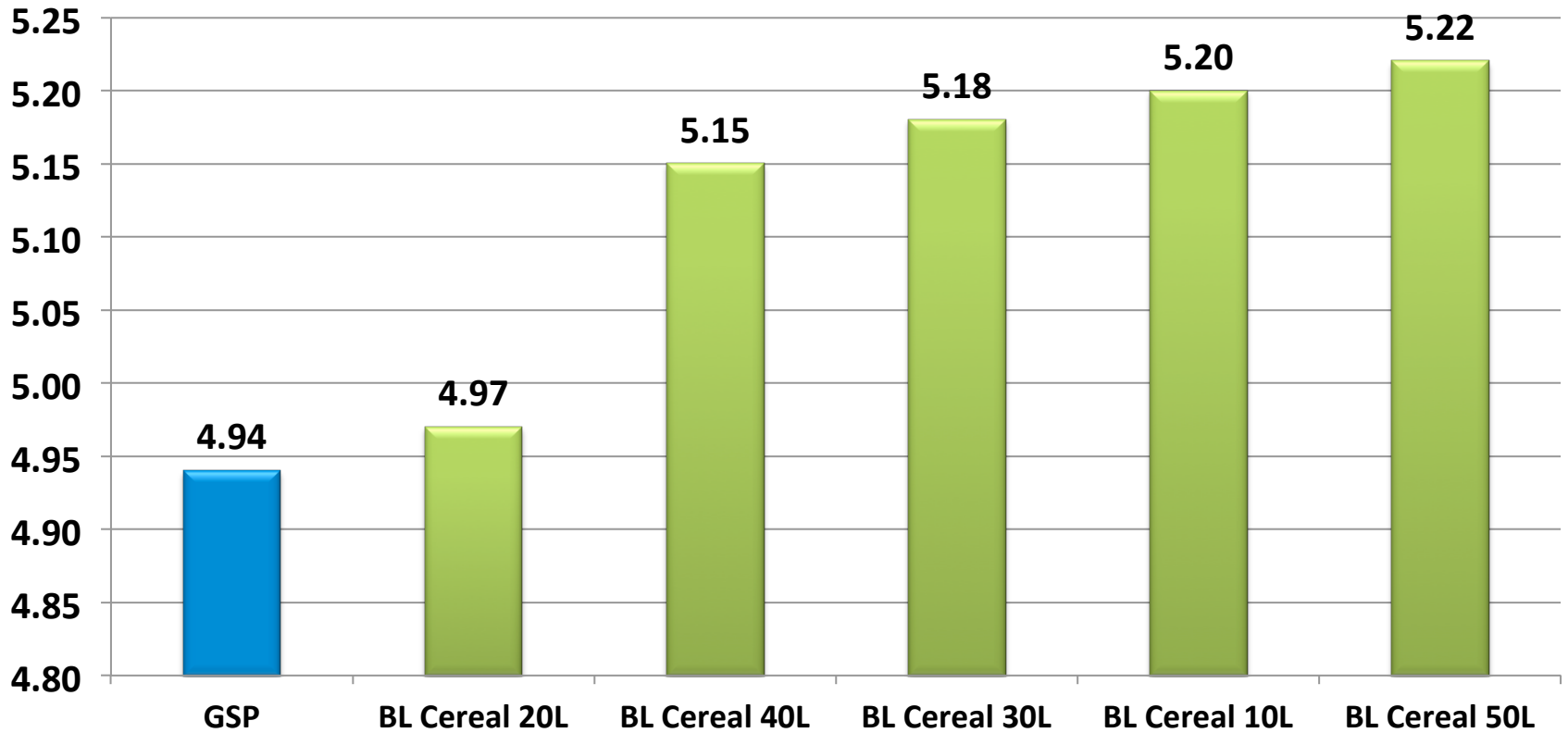
Black Label Cereal: 5-10-7, Copper 1 + Zinc 0.4 w/v

Wheat Yield - T/ha

Treatment	Rate/ha	Yield T/ha	Protein %
GSP	----	4.94	11.2
GSP + Black Label Cereal	10 L	5.20	11.4
GSP + Black Label Cereal	20 L	4.97	11.3
GSP + Black Label Cereal	30 L	5.18	11.1
GSP + Black Label Cereal	40 L	5.15	11.3
GSP + Black Label Cereal	50 L	5.22	11.0

LSD (P=.05) = 0.268 CV = 4.4

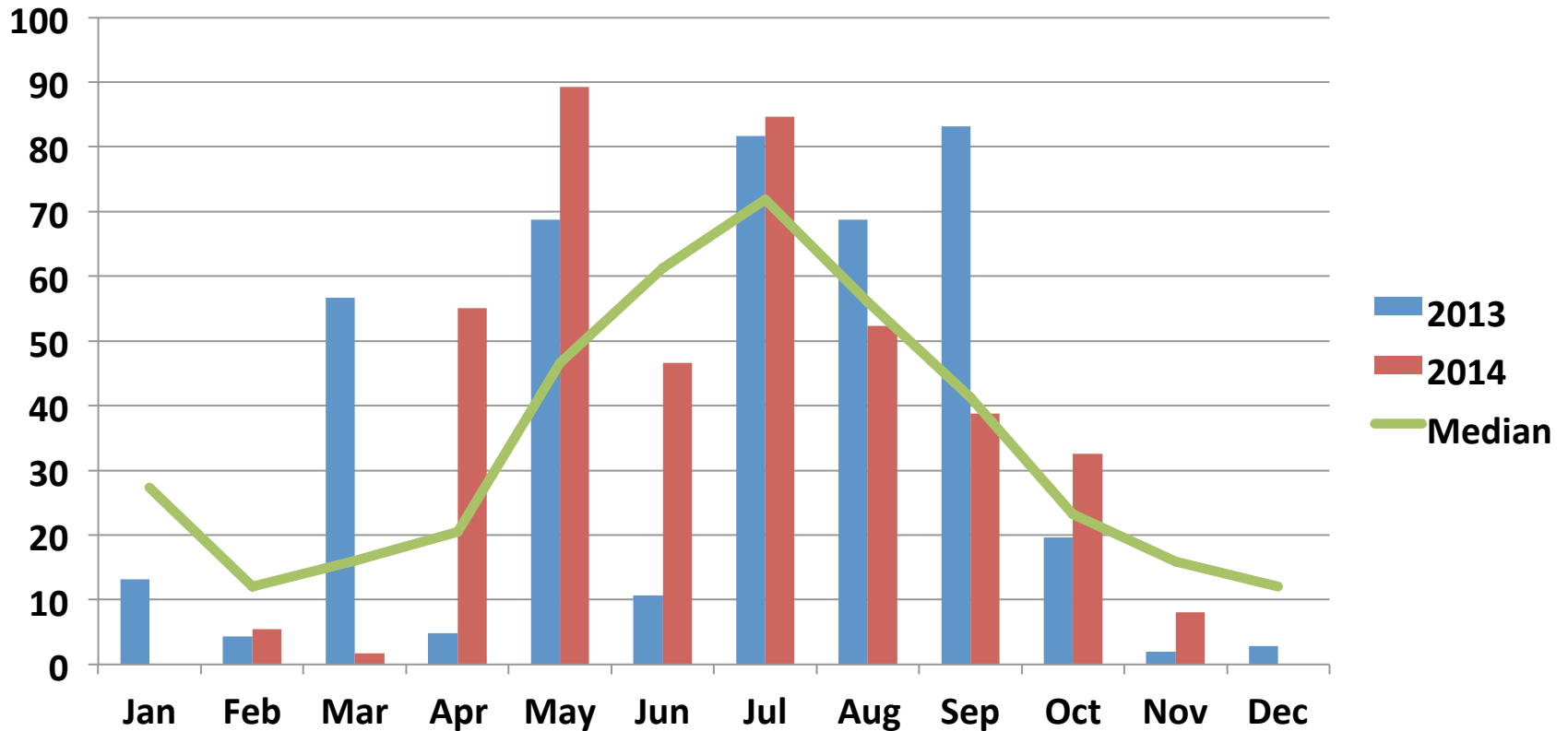
Wheat Yield - T/Ha



LSD (P=.05) = 0.268 CV = 4.4

2014 TRIAL DATA

York – Rainfall (mm)



Conclusions

- The addition of Black Label Cereal over and above the GSP at planting in this trial has demonstrated positive yield increases across all rates tested.
- While there is a statistical difference when comparing the GSP + 50L/ha rate of Black Label Cereal to the GSP alone for yield, the GSP + 10L/ha rate of Black Label Cereal has provided the best ROI.
- This trend for the GSP + 10L/ha rate of Black Label Cereal has been seen in other replicated trials conducted in 2014.