

2014 Loveland Agri Products Trial Data

Foundation LM (in-furrow) - Wheat.
York, WA

Trial Setup

- Fully randomised & replicated plot work – 18 replicates
- Plot size = 2.5 m X 10 m

Planting date	27/05/2014
Site	York, WA
Variety	Mace @ 80 kg/ha
GSP	K-Till Mn 120 kg/ha + Urea 120 kg/ha

Trial Protocol

Treatment	Rate/ha	Timing
Nil Fertiliser	----	----
GSP (K-Till Mn)	120 kg	Planting
GSP + Foundation LM	120 kg + 5 L	Planting

Foundation LM: 0-0-0 w/v

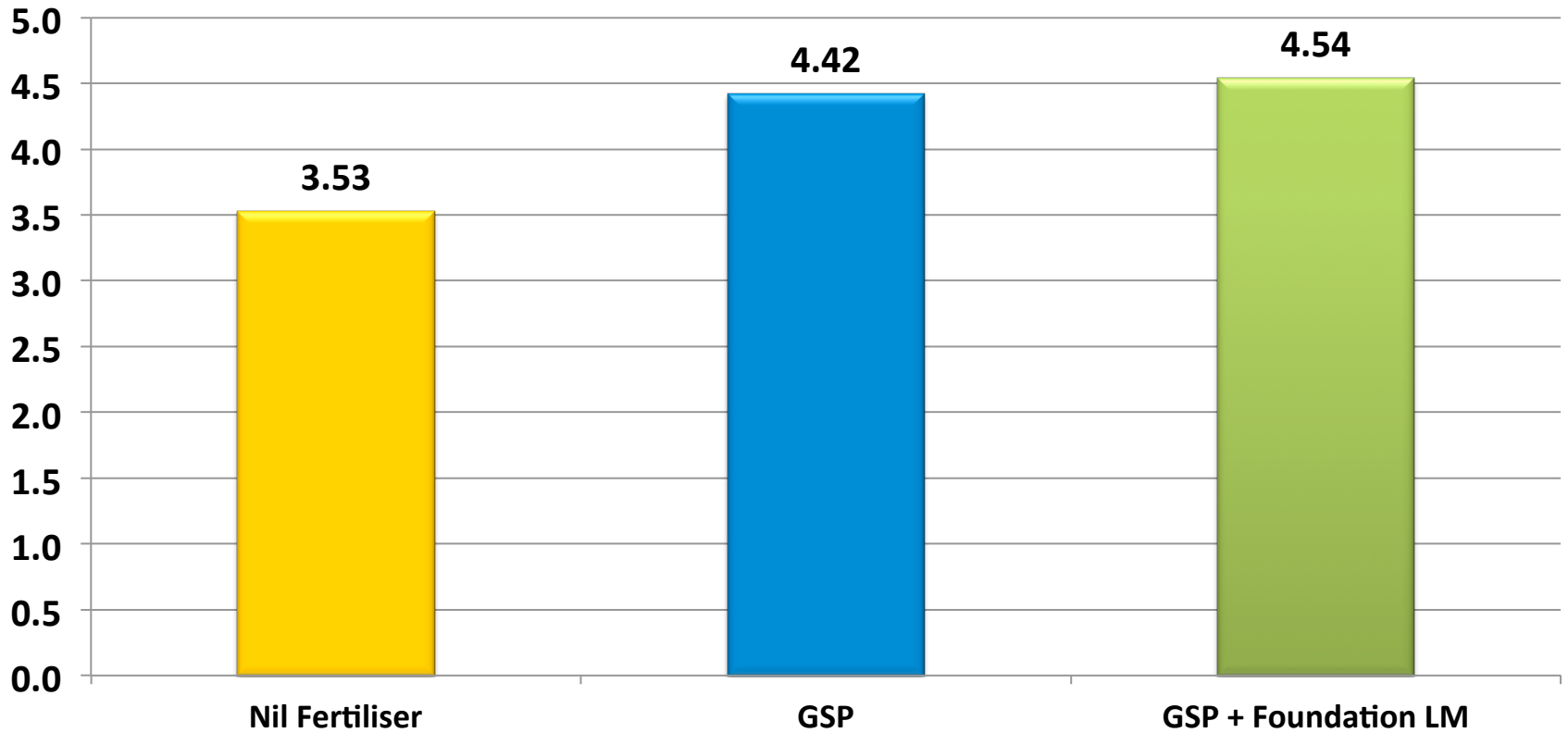
Improved vigour observed from Foundation LM.

Wheat Yield - T/ha

Treatment	Rate/ha	Yield T/ha	Protein %
Nil Fertiliser	----	3.53	11.8
GSP (K-Till Mn)	120 kg	4.42	11.5
GSP + Foundation LM	120 kg + 4L/ha	4.54	11.3

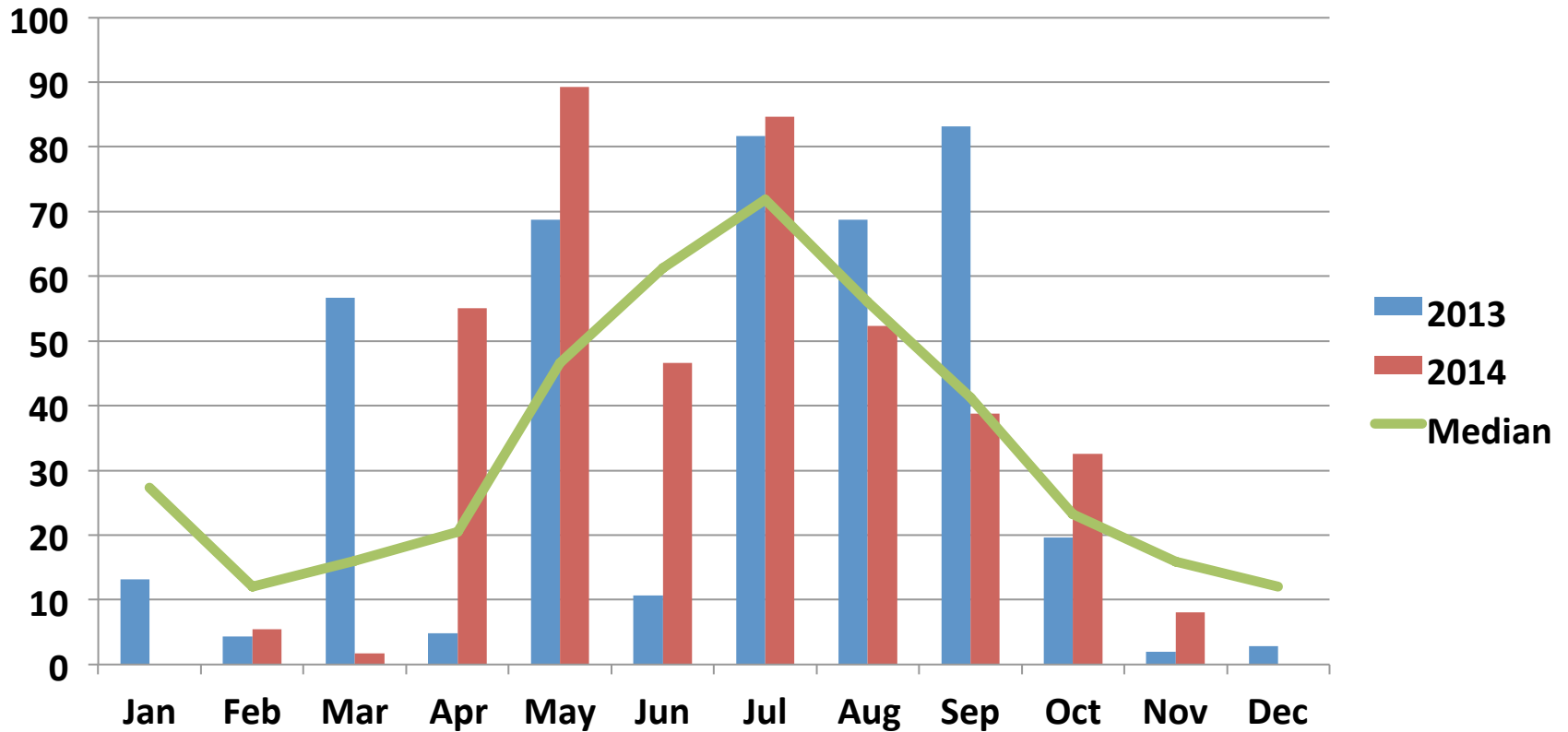
LSD (P=.05) = 0.188 CV = 6.7

Wheat Yield - T/Ha



LSD (P=.05) = 0.188 CV = 6.7

York - Rainfall



Conclusions

- In this trial Foundation LM has provided a positive yield increase when applied in furrow over and above the GSP.
- This trial demonstrates Foundation LM's ability to improve the efficiency of applied fertiliser.
- In 2015 and beyond further trial work in WA should focus on yield responses when Foundation LM is used at 2.5L/ha as well as the 5L/ha rate – across a wider geographic area.