

2014 Loveland Agri Products Trial Data

Maximum N-Pact foliar - Wheat
York, WA

Trial Setup

- Fully randomised & replicated plot work – 6 replicates
- Plot size = 2.5 m X 10 m

Planting date	22/05/2014
Site	York, WA
Variety	Calingiri @ 80 kg/ha
GSP	K-Till Mn 120 kg/ha + Urea 125 kg/ha

Trial Protocol

Treatment	Rate/ha	Timing
GSP	----	----
GSP + Maximum N-Pact	10 L	Z15-22
GSP + UAN	40 L	Z15-22
GSP + Maximum N-Pact	10 L	Z33
GSP + UAN	40 L	Z33
GSP + Maximum N-Pact	10 L	Z59-61
GSP + UAN	40 L	Z59-61

Maximum N-Pact: 29-0-0 w/v

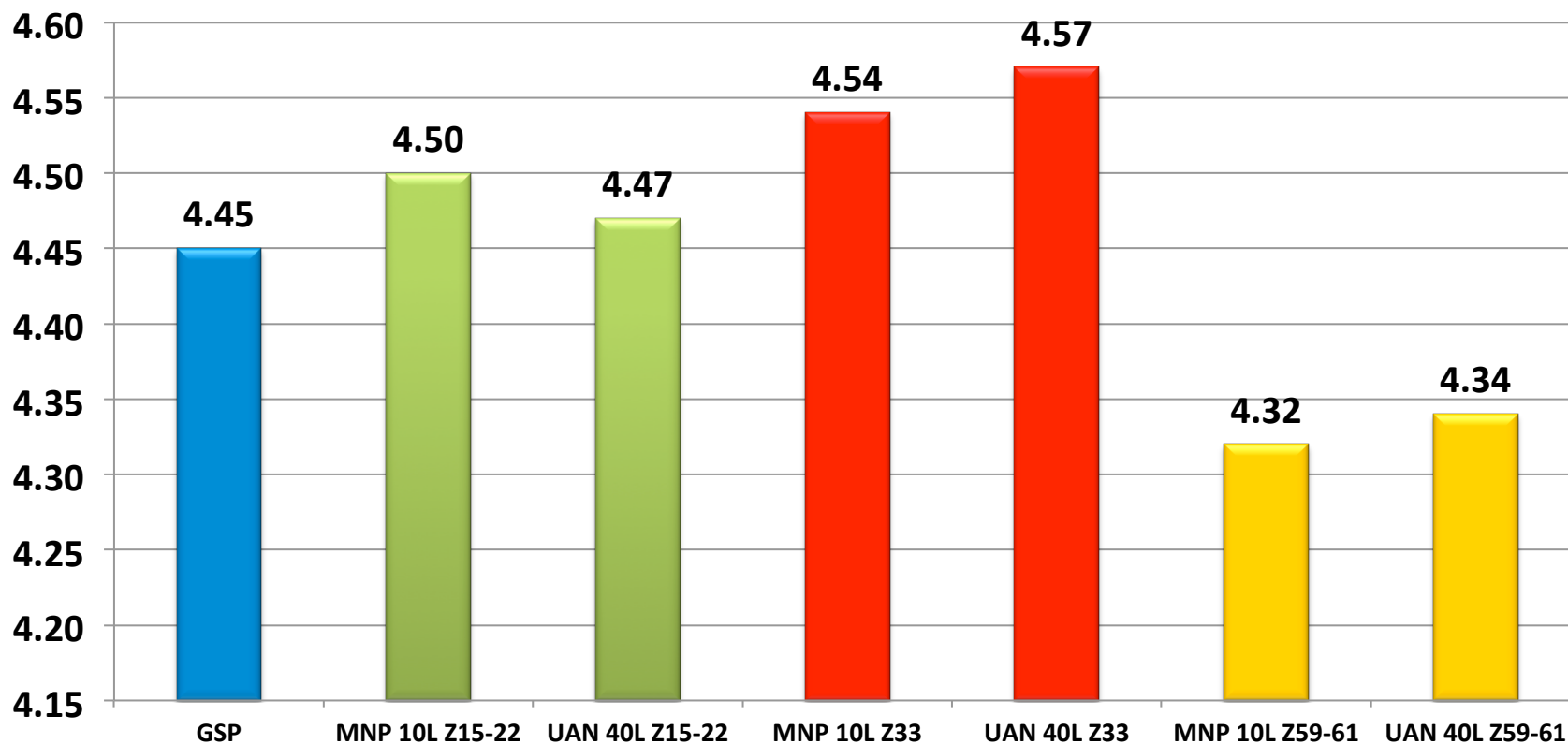
UAN: 42-0-0 w/v

Wheat Yield - T/ha

Treatment	Rate/ha	Yield T/ha	Protein %
GSP	----	4.45	9.0
GSP + Maximum N-Pact Z15-22	10 L	4.50	9.1
GSP + UAN Z15-22	40 L	4.47	9.3
GSP + Maximum N-Pact Z33	10 L	4.54	9.3
GSP + UAN Z33	40 L	4.57	9.3
GSP + Maximum N-Pact Z59-61	10 L	4.32	9.4
GSP + UAN Z59-61	40 L	4.34	9.8

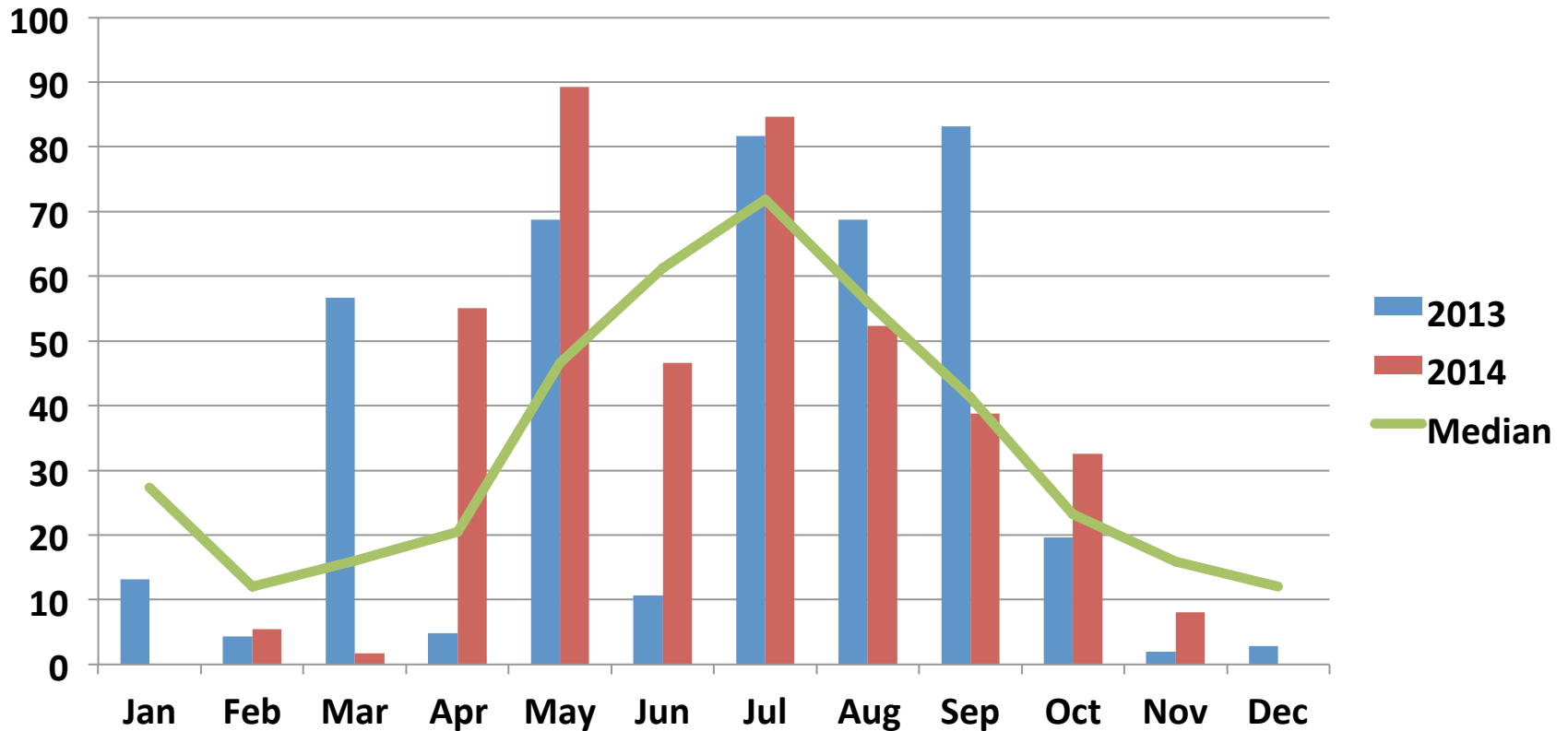
LSD (P=.05) = 0.336 CV = 6.4

Wheat Yield - T/Ha



LSD (P=.05) = 0.336 CV = 6.4

York – Rainfall (mm)



Conclusions

- This trial demonstrates the flexibility of Maximum N Pact on Wheat whether it is applied at early, mid or at later timings.
- The trial indicates Maximum N Pact @ 10L/ha is equivalent to 40L/ha of UAN. This has been seen in a number of trials now where baseline nutrition is adequate.
- Maximum N Pact has very good compatibility with herbicide, insecticide and fungicide applications which can mean a one pass trip for the grower saving time and money.