

# 2014 Loveland Agri Products Trial Data

Black Label Cereal Foliar Trial –  
Wheat – Billa Billa, Qld

# Trial Setup

- Fully randomised & replicated plot work – 7 replicates
- Plot size = 10 m X 1.76 m

|               |                        |
|---------------|------------------------|
| Planting date | 10/06/2014             |
| Site          | Billa Billa            |
| Variety       | Spitfire @ 60 kg/ha    |
| GSP           | MAP 60 kg/ha + Zinc 2% |

# Trial Protocol

| Treatment                | Rate/ha          | Timing                 |
|--------------------------|------------------|------------------------|
| MAP + Zn 2% (GSP)        | 60 kg            | Planting               |
| GSP + Black Label Cereal | 60 kg + 4 L      | Z22-25                 |
| GSP + Black Label Cereal | 60 kg + 8 L      | Z22-25                 |
| GSP + Black Label Cereal | 60 kg + 8 L + 8L | Z22-25 + 14 days later |
| GSP + Black Label Cereal | 60 kg + 10 L     | Z22-25                 |
| GSP + Black Label Cereal | 60 kg + 20 L     | Z22-25                 |
| GSP + Black Label Cereal | 60 kg + 40 L     | Z22-25                 |

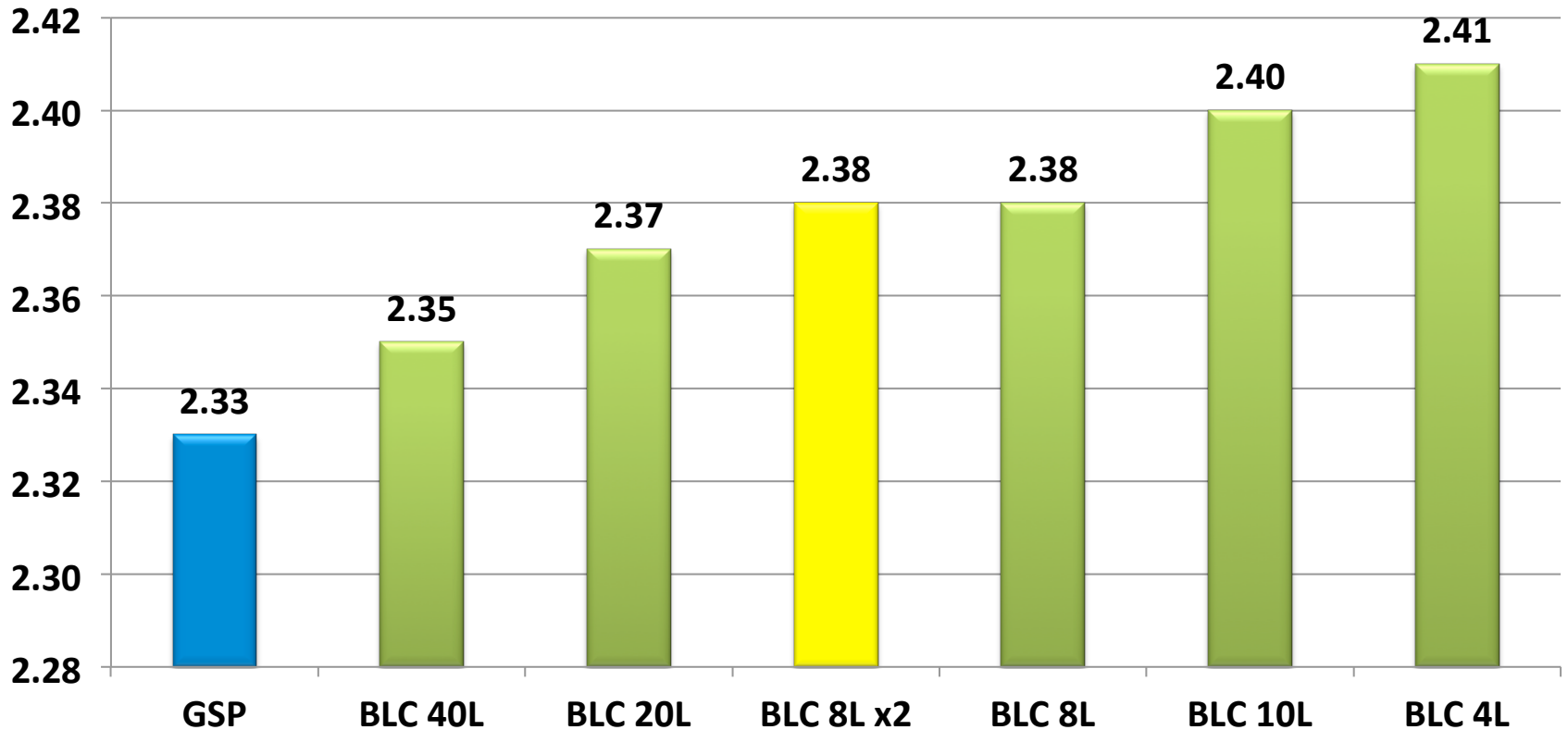
**Black Label Cereal:** 5-10-7, Copper 1 + Zinc 0.4 w/v

# Wheat Yield - T/ha

| Treatment   | Rate/ha          | Yield T/ha | Protein % |
|---|------------------|------------|-----------|
| MAP + Zn 2% (GSP)                                 | 60 kg            | 2.33       | 13.6      |
| GSP + Black Label Cereal Z22-25                   | 60 kg + 4 L      | 2.41       | 13.8      |
| GSP + Black Label Cereal Z22-25                   | 60 kg + 8 L      | 2.38       | 13.8      |
| GSP + Black Label Cereal Z22-25 + @ 14 days later | 60 kg + 8 L + 8L | 2.38       | 13.6      |
| GSP + Black Label Cereal Z22-25                   | 60 kg + 10 L     | 2.40       | 13.6      |
| GSP + Black Label Cereal Z22-25                   | 60 kg + 20 L     | 2.37       | 13.5      |
| GSP + Black Label Cereal Z22-25                   | 60 kg + 40 L     | 2.35       | 13.6      |

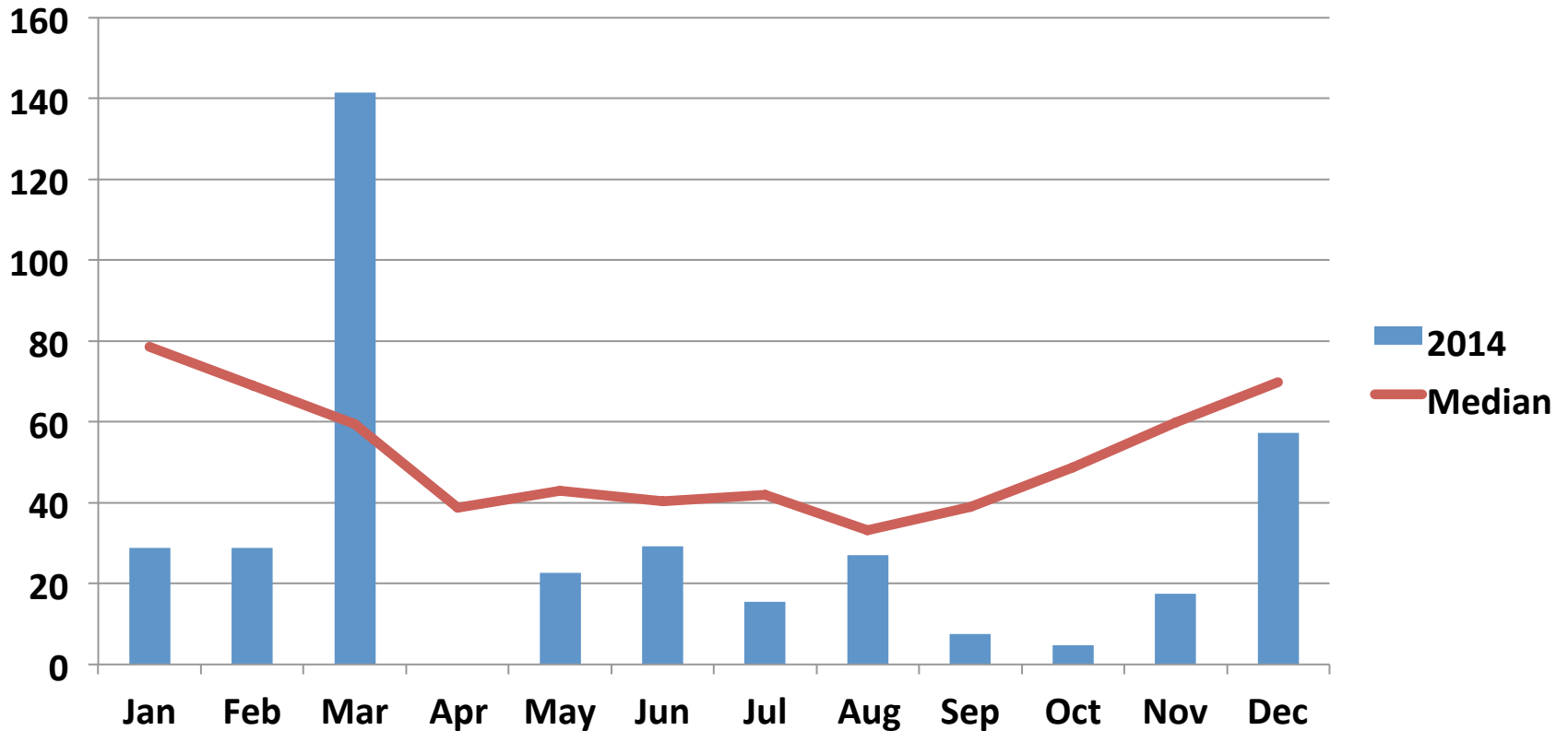
LSD (P=.05) = 0.139 CV = 5.0

# Wheat Yield - T/Ha



LSD (P=.05) = 0.139 CV = 5.0

# Goondiwindi – Rainfall (mm)



# Conclusions

- The Black Label Cereal applied foliar @ 4L/ha out yielded the higher rates of the Black Label Cereal and gave the best ROI.
- Maximum yield potential for this crop was hindered by poor growing conditions caused by minimal in crop rainfall.