

2014 Loveland Agri Products Trial Data

LoKomotive & LPI6225 foliar trial –
Wheat - Brookstead, Qld

Trial Setup

- Fully randomised & replicated plot work – 6 replicates
- Plot size = 10 m X 2m
- Treatments applied – 29/09/2014

Planting date	19/7/14
Site	Brookstead Trial Site
Variety	Spitfire
GSP	Nil

Trial Protocol

Treatment	Rate/ha	Timing
GSP = (Control)	----	----
GSP + LPI6225	1 L	Foliar – Z31
GSP + LoKomotive	10 L	Foliar – Z31
GSP + LPI6225 + LoKomotive	1 L + 10 L	Foliar – Z31

LoKomotive: 3-0-27 w/v

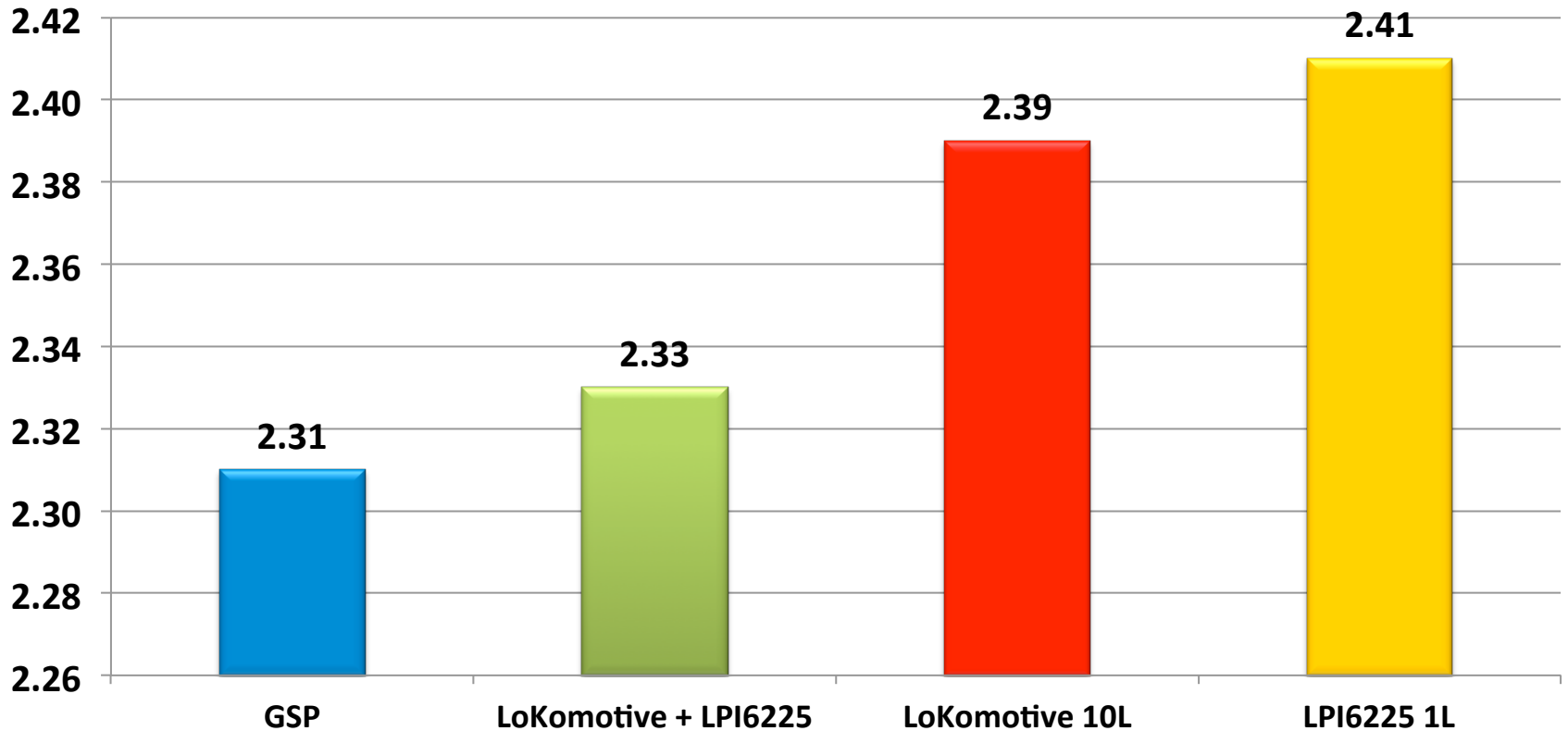
LPI6225: 1-0-0 w/v

Wheat Yield - T/ha

Treatment	Rate/ha	Yield T/ha	Protein %
GSP = (Control)	----	2.31	9.9
GSP + LPI6225	1 L	2.41	10.0
GSP + LoKomotive	10 L	2.39	10.0
GSP + LPI6225 + LoKomotive	1 L + 10 L	2.33	9.7

LSD (P=.05) = 0.177 CV = 6.0

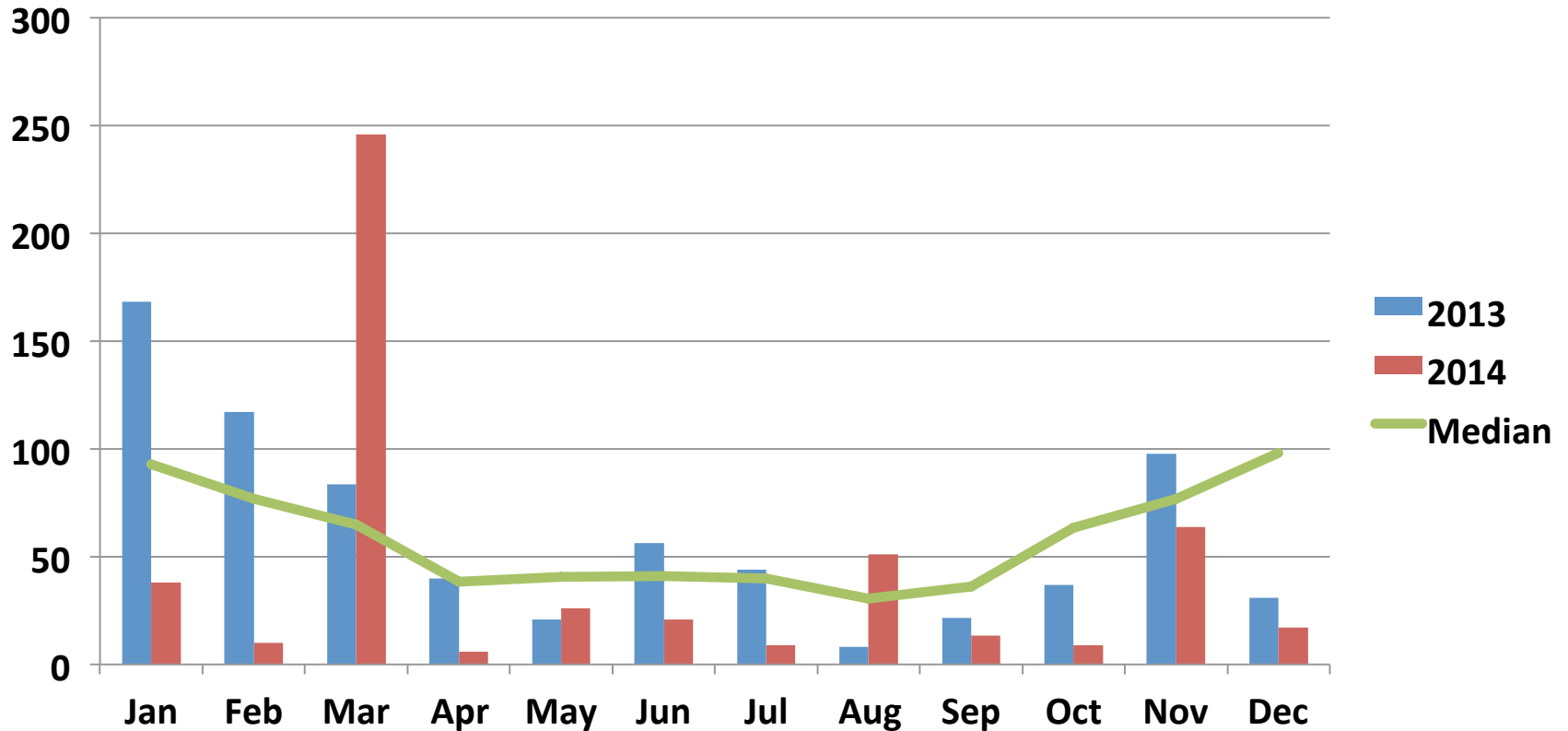
Wheat Yield - T/Ha



LSD (P=.05) = 0.177 CV = 6.0

2014 TRIAL DATA

Brookstead – Rainfall (mm)



Conclusions

- The LPI6225 yielded well in this trial given the dry finish however does not appear to be as consistent as LoKomotive when taking into account other replicated trials.
- Foliar LoKomotive @ 10L/ha is giving a positive yield improvement though not significantly different. A lower rate of 5L/ha needs to be compared to the 10L/ha rate in future trial work.