

2014 Loveland Agri Products Trial Data

Foundation LM in furrow trial - Wheat
Temora, NSW

Trial Setup

- Fully randomised & replicated plot work – 10 replicates
- Plot size = 20 m X 1.76 m

Planting date	08/05/2014
Site	Temora Research Station
Variety	Suntop @ 60 kg/ha
GSP	Agrichem APP @ 20 L/ha

Trial Protocol

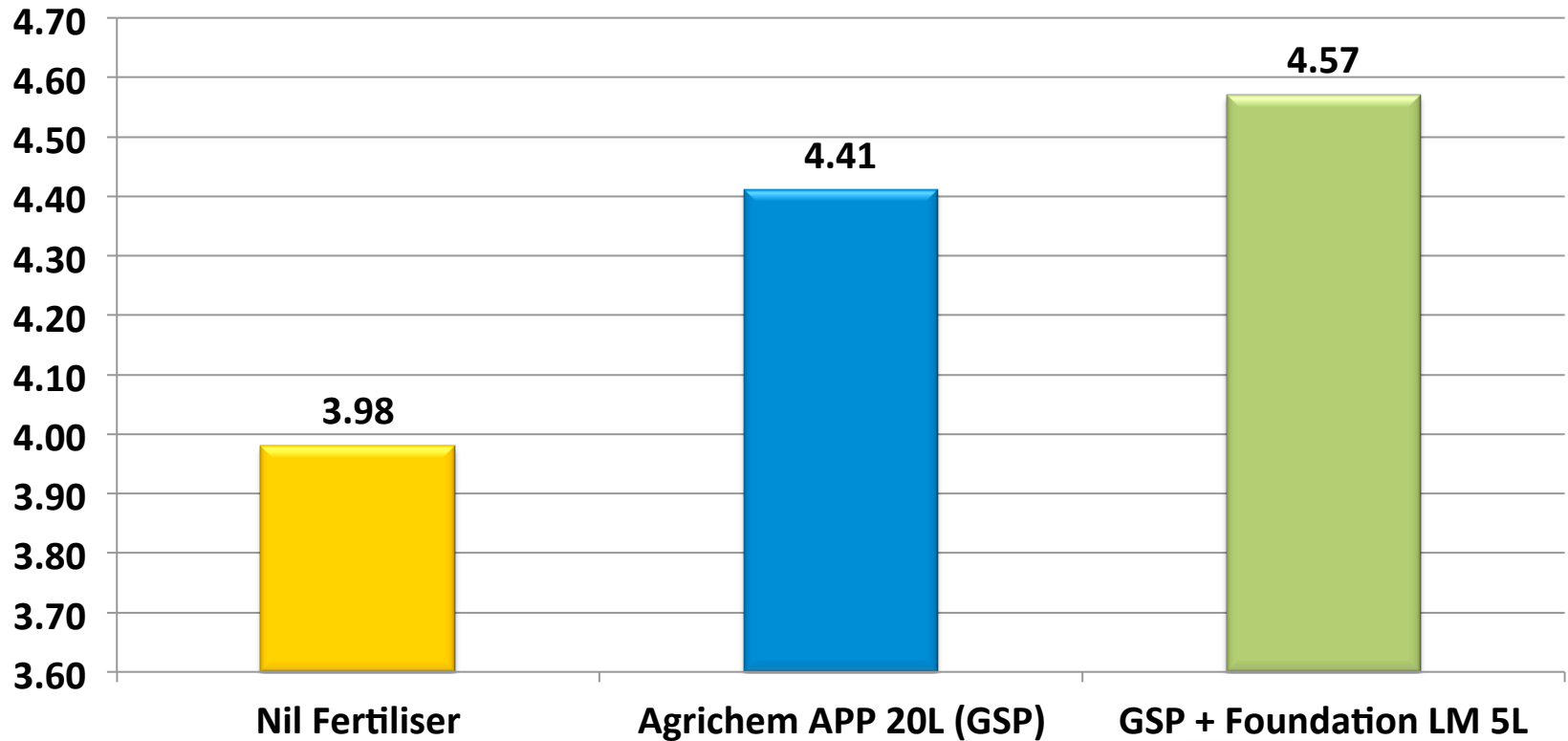
Treatment	Rate/ha	Timing
Nil Fertiliser	----	----
Agrichem APP (GSP)	20 L	Planting
GSP + Foundation LM	20 L + 5 L	Planting

Wheat Yield - T/ha

Treatment	Rate/ha	Yield T/ha	Protein %
Nil Fertiliser	----	3.98	12.6
Agrichem APP (GSP)	20 L	4.41	12.7
GSP + Foundation LM	20 L + 5 L	4.57	12.4

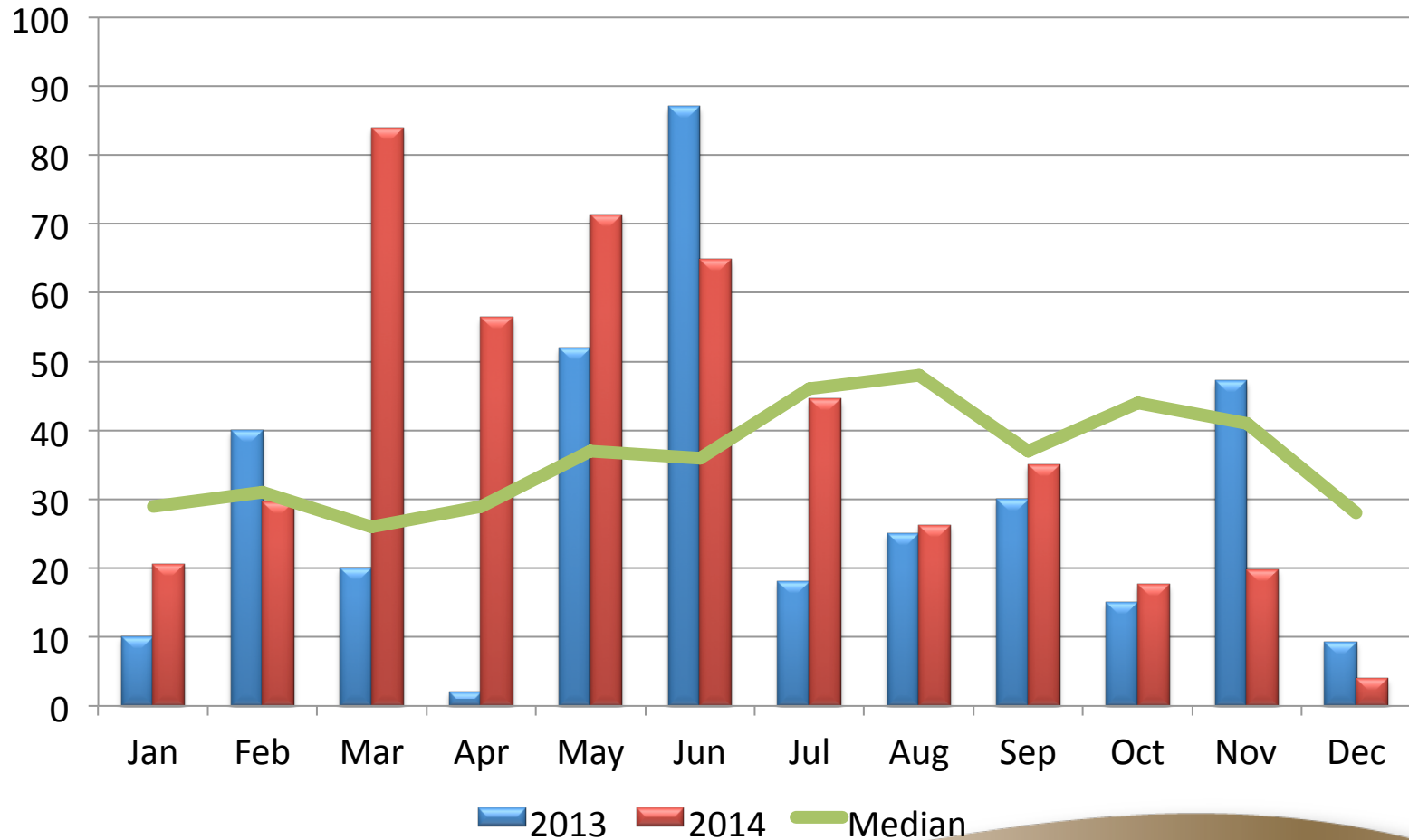
LSD (P=.05) = 0.070 CV = 2.09

Wheat Yield - T/Ha



LSD (P=.05) = 0.070 CV = 2.09

Temora Research Station - Rainfall



Conclusions

- Trial sown via plot seeder with liquid injected 15mm below the seed a total liquid volume of 100L/ha applied with each liquid treatment.
- Nil fertiliser was the best treatment at emergence. This occurrence was short lived with fertiliser treatments quickly overtaking it.
- As the trial progressed 5L/ha of Foundation LM + GSP appeared the best and this was reflected in final yield. Result were significantly different when compared to GSP and NIL .
- No significant differences for Protein %.
- GSP + 5L/ha of Foundation LM was the treatment which had the most biomass / plot with a lack of rain at the seasons end it reflected poorly on this treatment.