

2014 Loveland Agri Products Trial Data

Awaken foliar trial - Lentils
Paskeville, SA

Trial Setup

- Fully randomised & replicated plot work – 6 replicates
- Plot size = 1.3 m X 11 m

Site	Paskeville, SA
Variety	Ace

Trial Protocol

Treatment	Rate/ha	Timing
Untreated	----	----
Awaken - foliar	1.2 L/ha	Pre-canopy closure
Awaken - foliar	2.4 L/ha	Pre-canopy closure

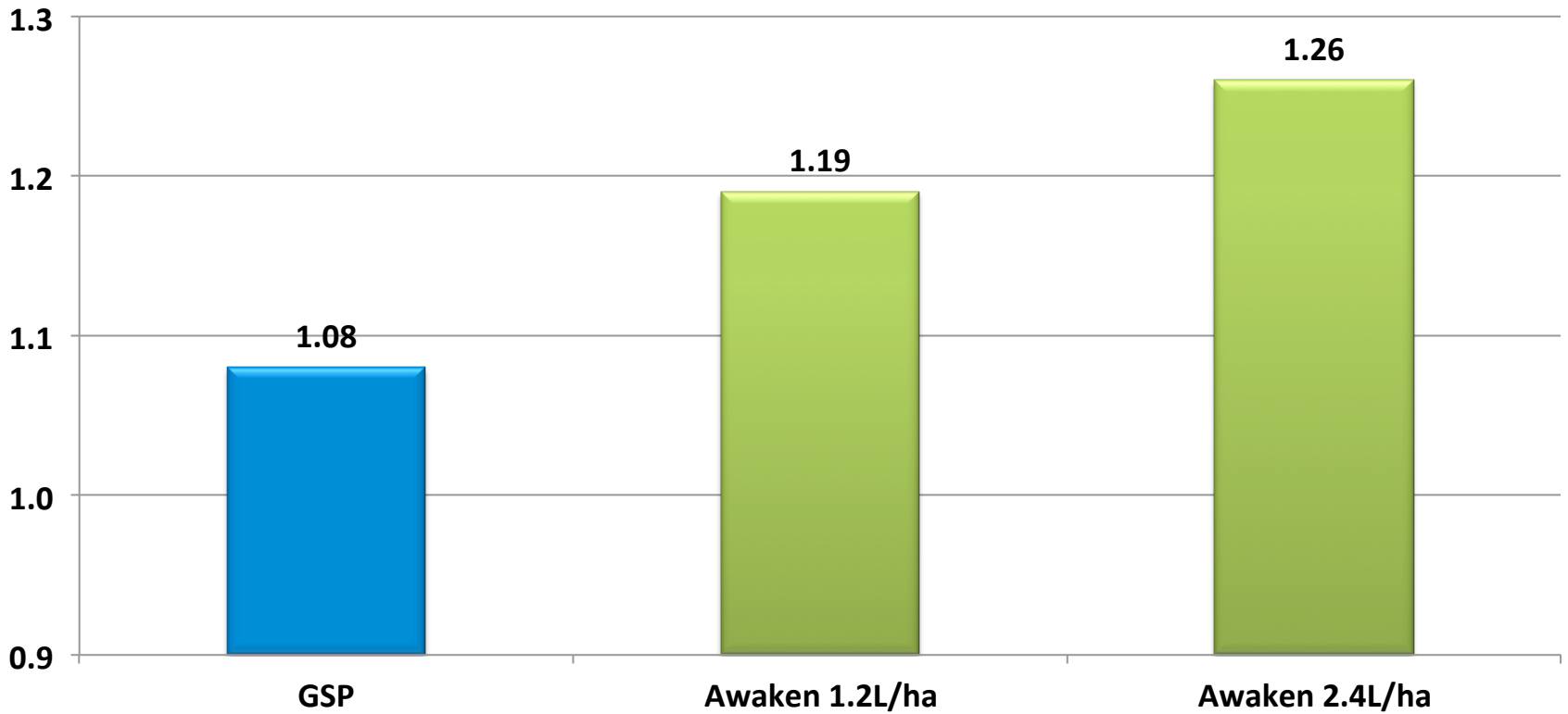
Awaken: 20-0-2 + micronutrients w/v

Lentil Yield - T/ha

Treatment	Rate/ha	Yield T/ha
Untreated	----	1.08
Awaken foliar – Pre-canopy closure	1.2 L/ha	1.19
Awaken foliar – Pre-canopy closure	2.4 L/ha	1.26

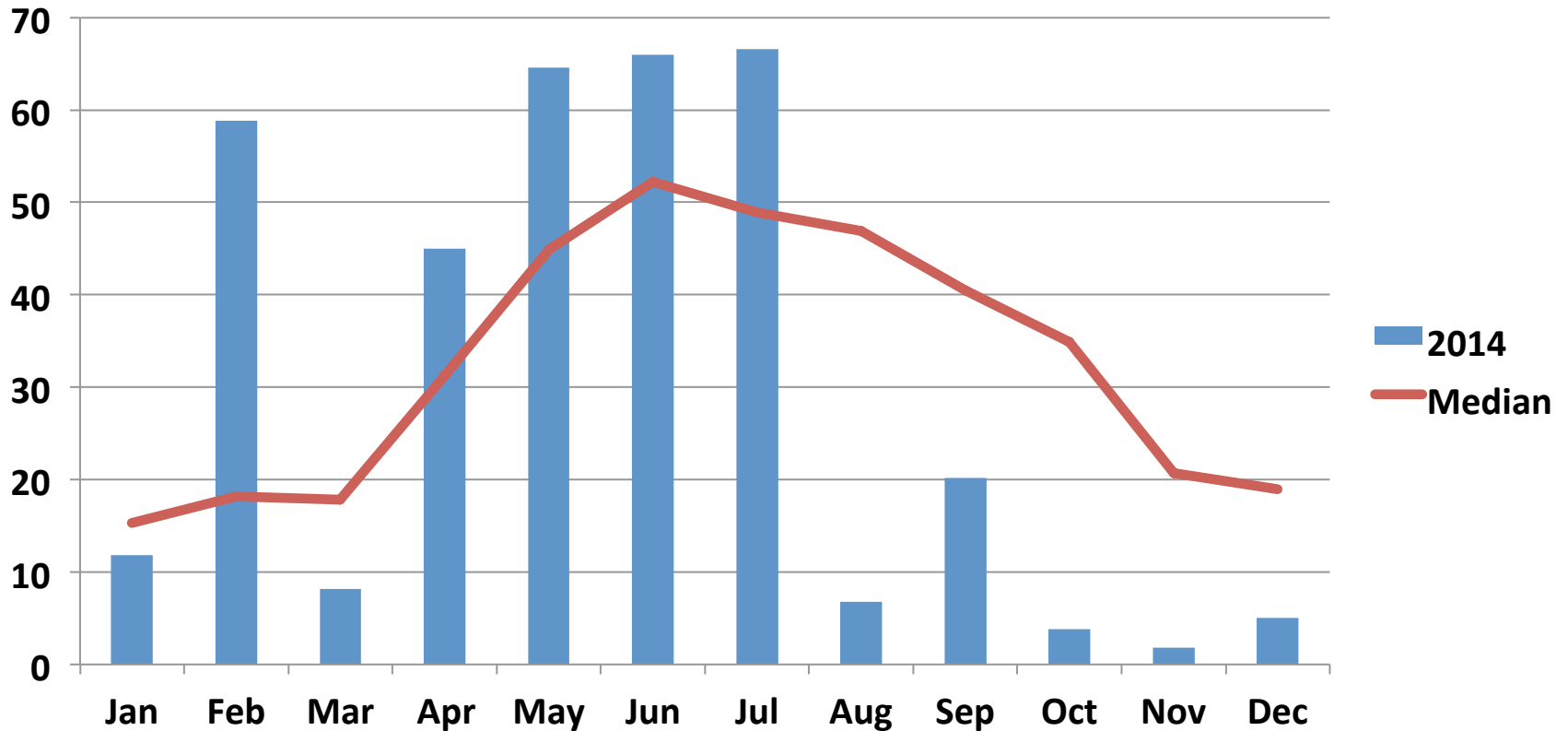
LSD (P=.05) = 0.191 CV = 12.7

Lentil Yield – T/ha



LSD (P=.05) = 0.191 CV = 12.7

Paskeville – Rainfall (mm)



Conclusion

- This trial demonstrates the benefit of Awaken at both 1.2 and 2.4L/ha applied foliar to Lentils.
- Seasonal growing conditions were less than ideal yet Awaken increased yield compared to the GSP easily paying for itself and providing the grower with a good financial return.
- Awaken foliar has a very good fit in pulse crops.