

2014 Loveland Agri Products Trial Data

Basis trial - Chickpea
Temora, NSW

Trial Setup

- Fully randomised & replicated plot work – 15 replicates
- Plot size = 10 m X 1.76 m

Planting date	13/05/2014
Site	Temora Research Station
Variety	PBA Boundary @ 80 kg/ha
GSP	MAP 80 kg/ha

Trial Protocol

Treatment	Rate/ha	Timing
Nil Fertiliser	----	----
MAP (GSP)	80 kg	Planting
MAP + Basis	80 kg + 4 L/T	Planting
MAP + Basis	64 kg + 4 L/T	Planting

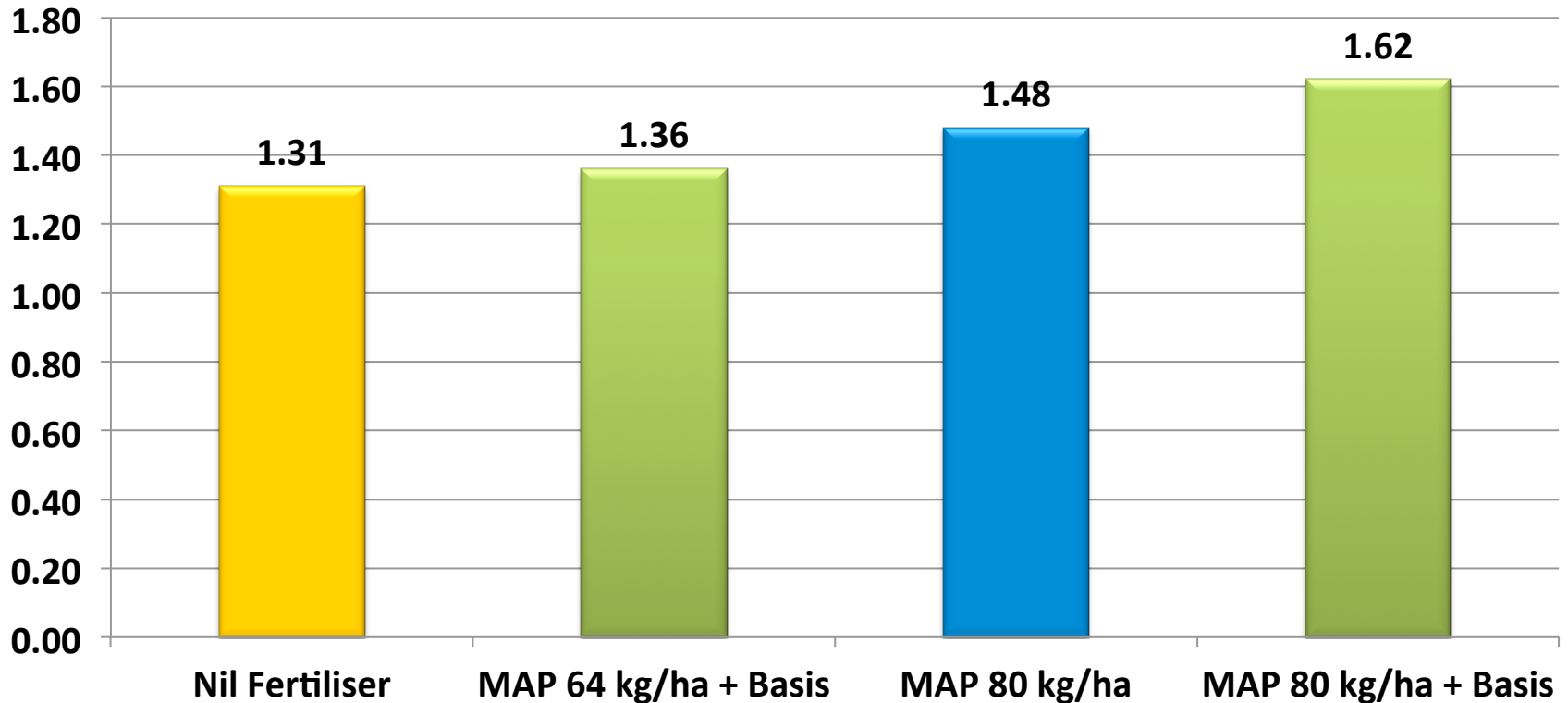
Basis: 3-0-0 w/v

Chickpea Yield - T/ha

Treatment	Rate/ha	Yield T/ha
Nil Fertiliser	----	1.31
MAP (GSP)	80 kg	1.48
MAP + Basis	80 kg + 4 L/T	1.62
MAP + Basis	64 kg + 4 L/T	1.36

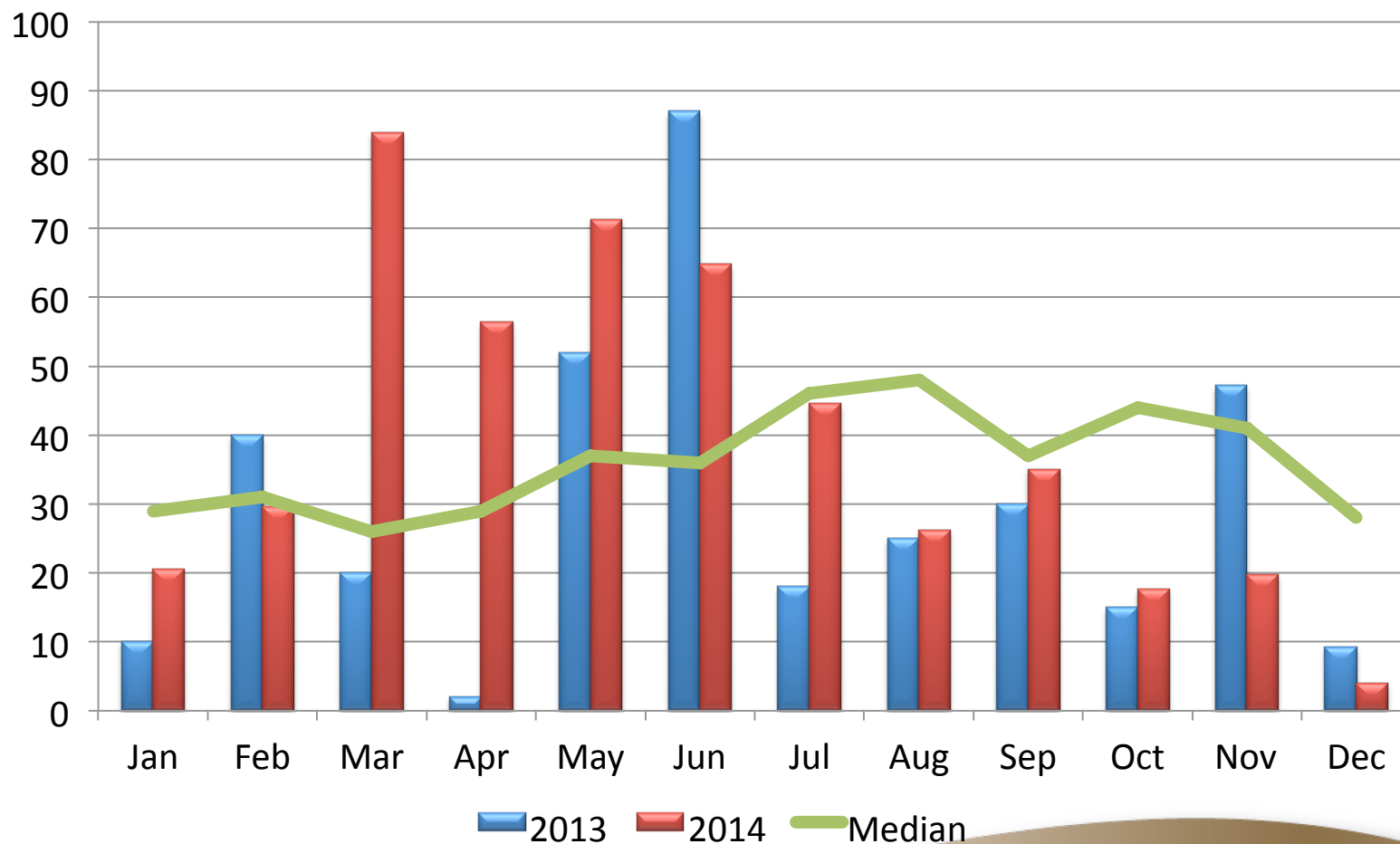
LSD (P=.05) = 0.156 CV = 14.7

Chickpea Yield - T/Ha



LSD (P=.05) = 0.156 CV = 14.7

Temora Research Station - Rainfall



Conclusions

- Trial sown using MAP and Basis applied by hand mixer.
- Trial sown into ideal sowing conditions
- Treatment 3 MAP @ 80kg/ha + Basis was the best treatment once the crop had emerged and for final yield.
- The lower rate of MAP + Basis (64kg/ha) is not seen as a commercially viable treatment in this trial.