

2014 Loveland Agri Products Trial Data

Awaken Foliar - Canola
York, WA

Trial Setup

- Fully randomised & replicated plot work – 6 replicates
- Plot size = 2.5 m X 10 m

Planting date	12/05/2014
Site	York, WA
Variety	Snapper TT @ 3 kg/ha
GSP	K-Till Mn 120 kg/ha + Urea 110 kg/ha

Trial Protocol

Treatment	Rate/ha	Timing
GSP	----	----
GSP + Awaken	1.2 L	3 – 6 leaf
GSP + Awaken	2.4 L	3 – 6 leaf
GSP + Awaken	4.7 L	3 – 6 leaf

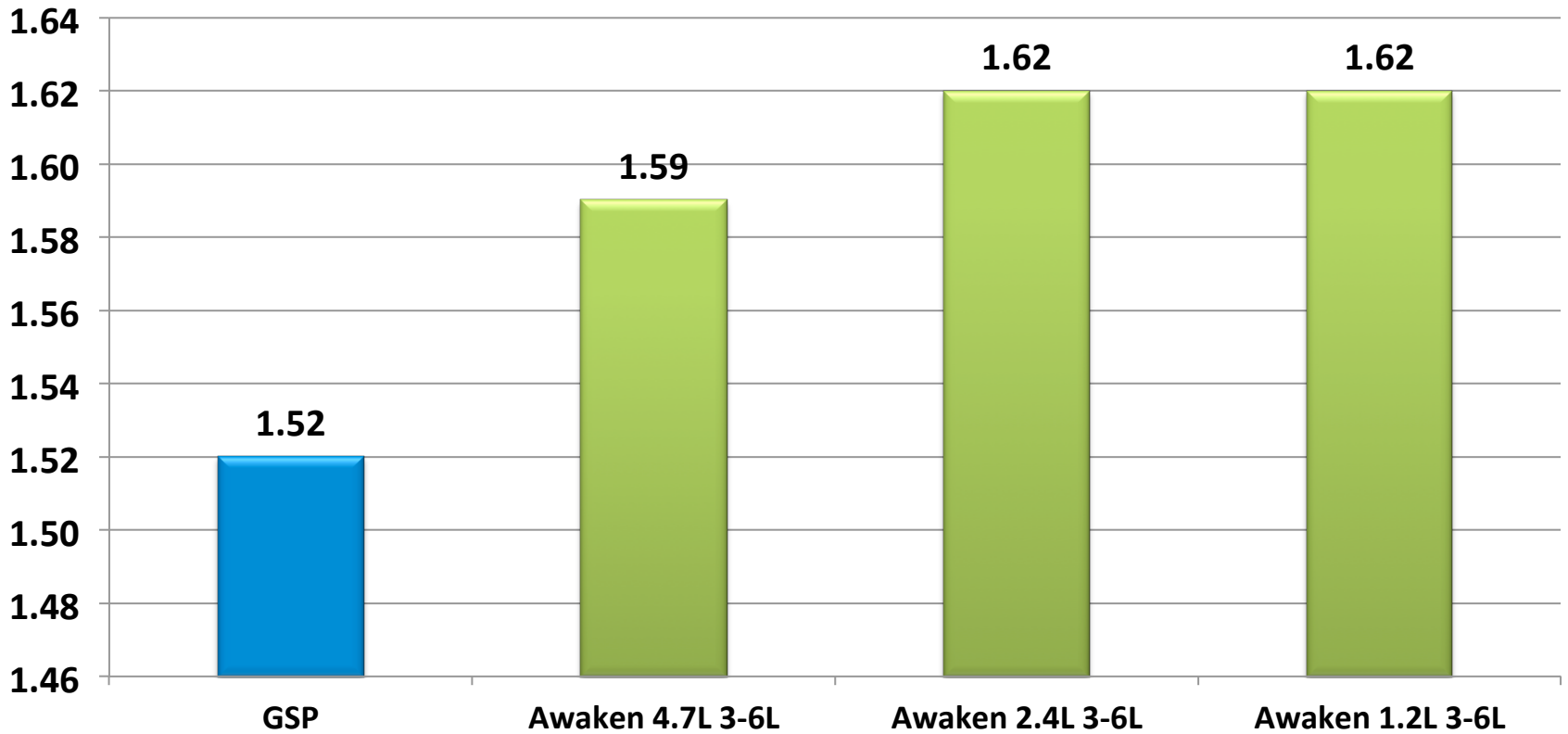
Awaken: 20-0-2 + micronutrients w/v

Canola Yield - T/ha

Treatment	Rate/ha	Yield T/ha	Oil %
GSP	----	1.52	51.3
GSP + Awaken 3-6 leaf	1.2 L	1.62	50.8
GSP + Awaken 3-6 leaf	2.4 L	1.62	51.0
GSP + Awaken 3-6 leaf	4.7 L	1.59	51.4

LSD (P=.05) = 0.188 CV = 6.7

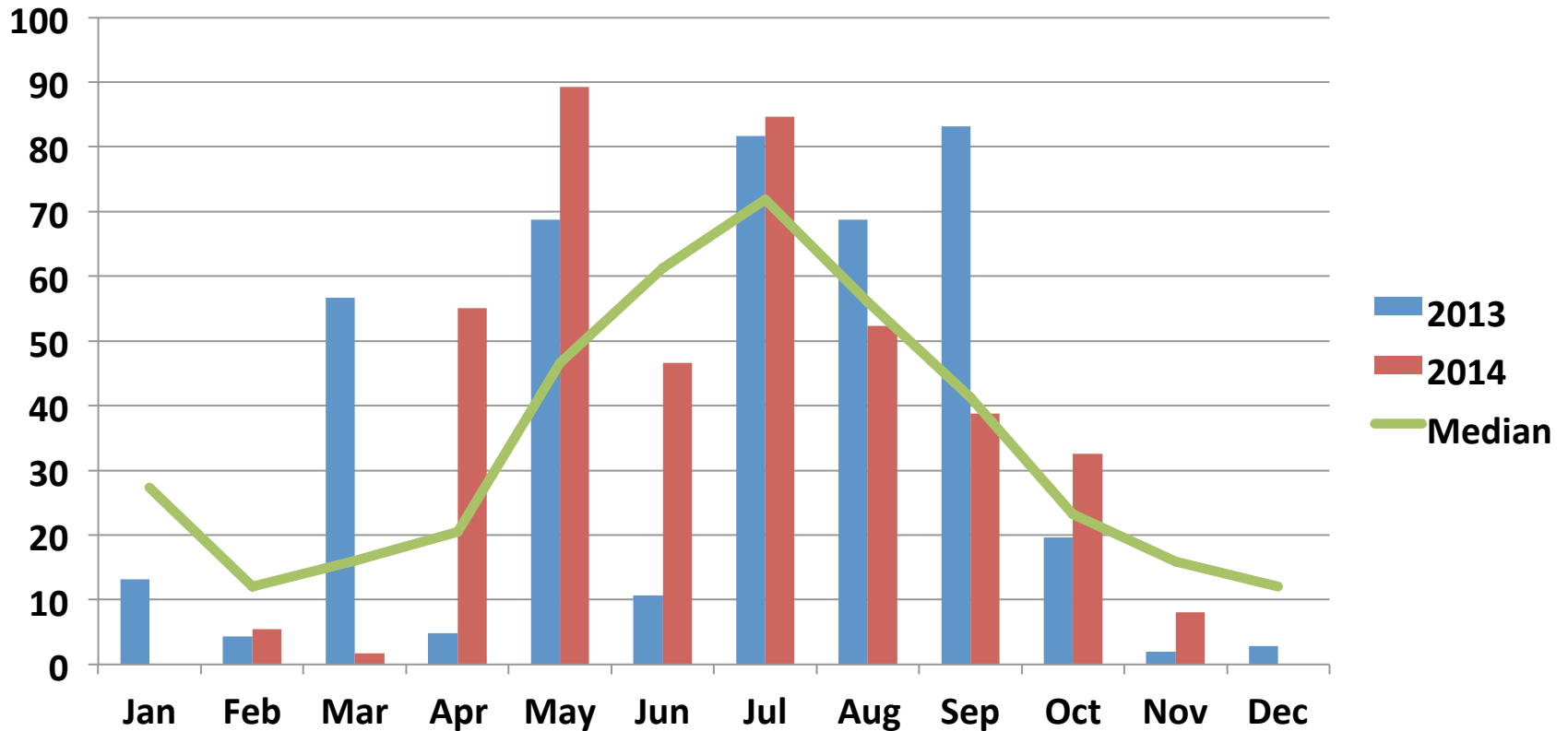
Canola Yield - T/Ha



LSD (P=.05) = 0.188 CV = 6.7

2014 TRIAL DATA

York – Rainfall (mm)



Conclusions

- Early foliar applications of Awaken are demonstrating a positive yield increase across all rate ranges.
- The 1.2L/ha rate of Awaken is the most commercially viable treatment based on yield and ROI.
- Awaken is providing a balanced micronutrient package early season which is stimulating auxin production and increasing photosynthetic activity.