

# 2014 Loveland Agri Products Trial Data

Foundation LM in furrow trial - Canola  
Callington, SA

# Trial Setup

- Fully randomised & replicated plot work – 16 replicates
- Plot size = 10 m X 1.65 m

Planting date	14/05/2014
Site	Callington
Variety	Bonito TT @ 3 kg/ha
GSP	APP 10% P 70L/ha + SOA 175 kg/ha + Urea 50 kg/ha

# Trial Protocol

Treatment	Rate/ha	Timing
Nil Fertiliser	----	----
APP 10% P (GSP)	70 L	Planting
GSP + Foundation LM	70 L + 5 L	Planting

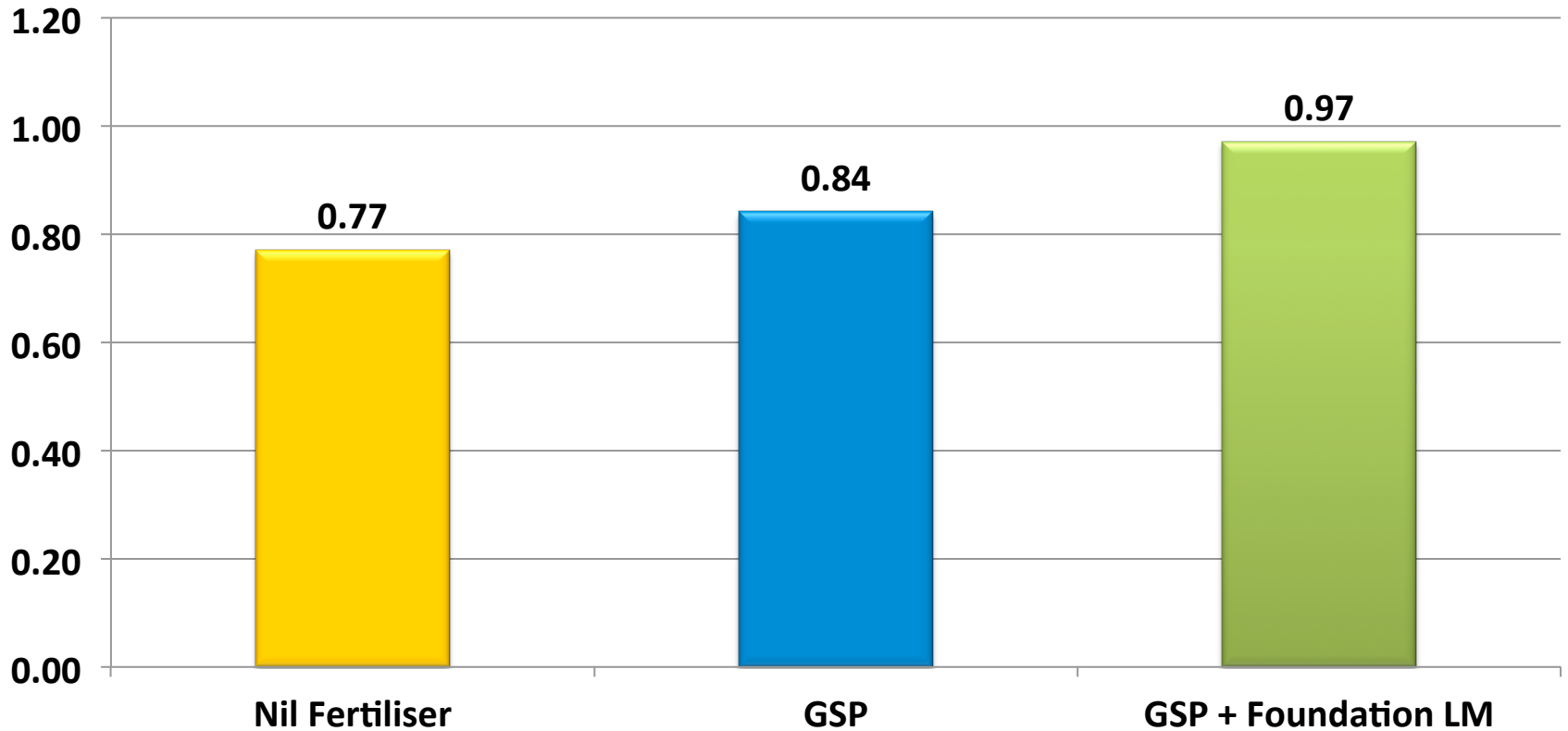
**Foundation LM: 0-0-0 w/v**

# Canola Yield - T/ha

Treatment	Rate/ha	Yield T/ha	Oil %
Nil Fertiliser	----	0.77	45.5
APP 10% P (GSP)	70 L	0.84	45.6
GSP + Foundation LM	70 L + 5 L	0.97	44.4

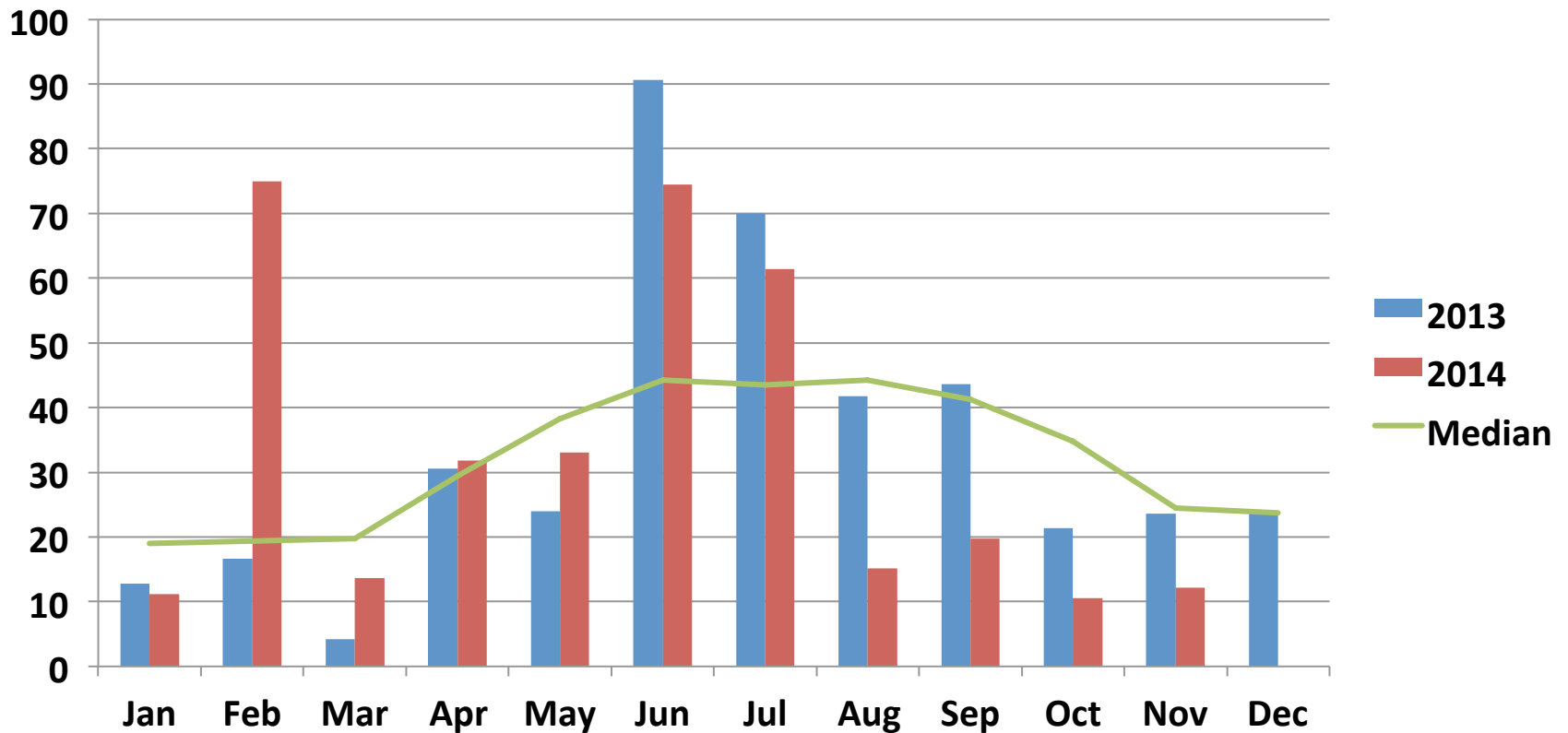
LSD (P=.05) = 0.108 CV = 17.3

# Canola Yield - T/Ha



LSD (P=.05) = 0.108 CV = 17.3

# Callington – Rainfall (mm)



# Conclusions

- The addition of Foundation LM to liquid APP has provided a significant difference in yield when compared to untreated and the GSP.
- Yield potential was impacted by seasonal conditions and vermin.