

# 2014 Loveland Agri Products Trial Data

Basis Trial - Canola  
Temora, NSW

# Trial Setup

- Fully randomised & replicated plot work – 15 replicates
- Plot size = 10 m X 1.76 m

Planting date	23/04/2014
Site	Temora Research Station
Variety	PAC 559 TT @ 3 kg/ha
GSP	MAP 80 kg/ha + Flutriafol 3 L/T Urea 150 kg/ha (5-8 leaf)

# Trial Protocol

Treatment	Rate/ha	Timing
Nil Fertiliser	----	----
MAP (GSP)	80 kg	Planting
MAP + Basis	80 kg + 4 L/T	Planting
MAP + Basis	64 kg + 4 L/T	Planting

**Basis:** 3-0-0 w/v

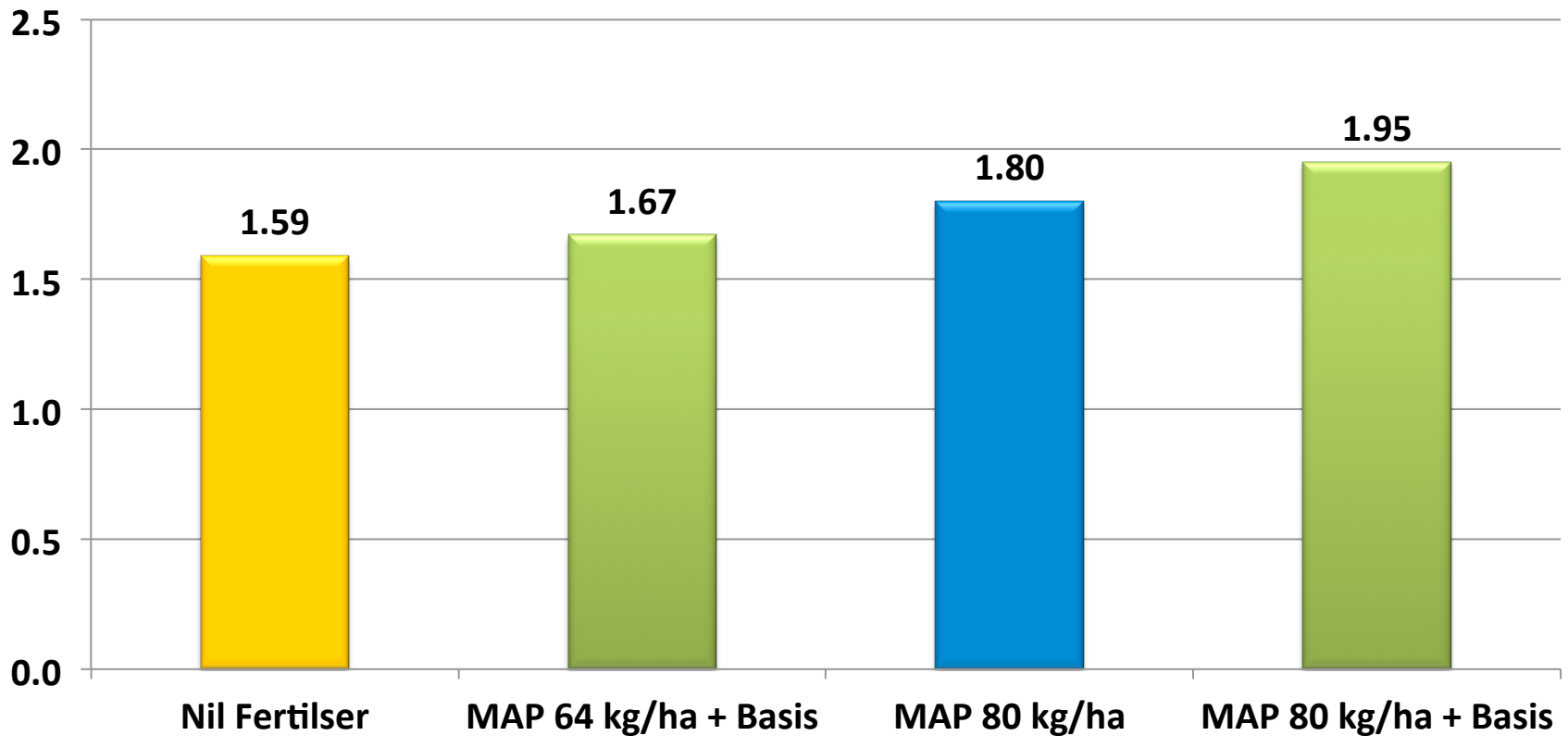
**Note:** All MAP treated with Flutriafol at 3 L/T

# Canola Yield - T/ha

Treatment	Rate/ha	Yield T/ha	Oil %
Nil Fertiliser	----	1.59	44.5
MAP (GSP)	80 kg	1.80	43.9
MAP + Basis	80 kg + 4 L/T	1.95	44.3
MAP + Basis	64 kg + 4 L/T	1.67	44.4

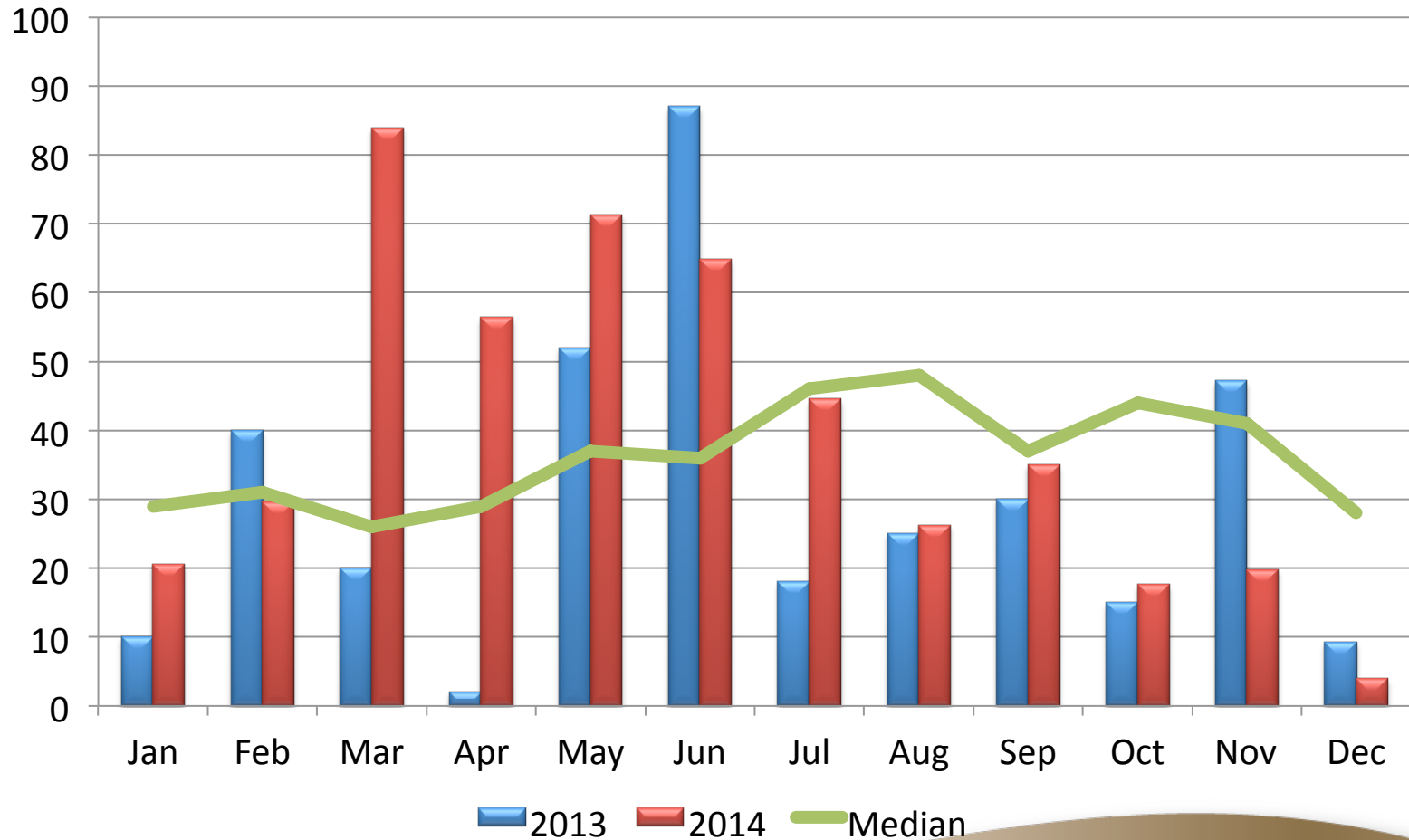
LSD (P=.05) = 0.197 CV = 14.7

# Canola Yield - T/Ha



LSD (P=.05) = 0.197 CV = 14.7

# Temora Research Station - Rainfall



# Conclusions

- Trial sown using MAP with Flutriafol commercially applied and Basis applied by hand mixer.
- All treatments suffered frost damage in July/August and again in September.
- Nil fertiliser plots emerged first followed by both Basis treatments then GSP, from 1 month post sow till maturity Basis + MAP 80kg/ha appeared the best treatment in this trial.
- No significant differences for Oil % bonus.
- The lower rate of MAP + Basis (64kg/ha) is not seen as a commercially viable treatment in this trial