

2014 Loveland Agri Products Trial Data

Foundation LM in furrow trial - Canola
Temora, NSW

Trial Setup

- Fully randomised & replicated plot work – 12 replicates
- Plot size = 10 m X 1.76 m

Planting date	14/05/2014
Site	Temora Research Station
Variety	PAC 450 TT @ 3 kg/ha
GSP	Agri - APP 20 L/ha Urea 150 kg/ha (3-5 leaf)

Trial Protocol

Treatment	Rate/ha	Timing
Nil Fertiliser	----	----
Agri - APP (GSP)	20 L	Planting
GSP + Foundation LM	20 L + 1.5 L	Planting
GSP + Foundation LM	20 L + 3 L	Planting
GSP + Foundation LM	20 L + 5 L	Planting

Foundation LM: 0-0-0 w/v

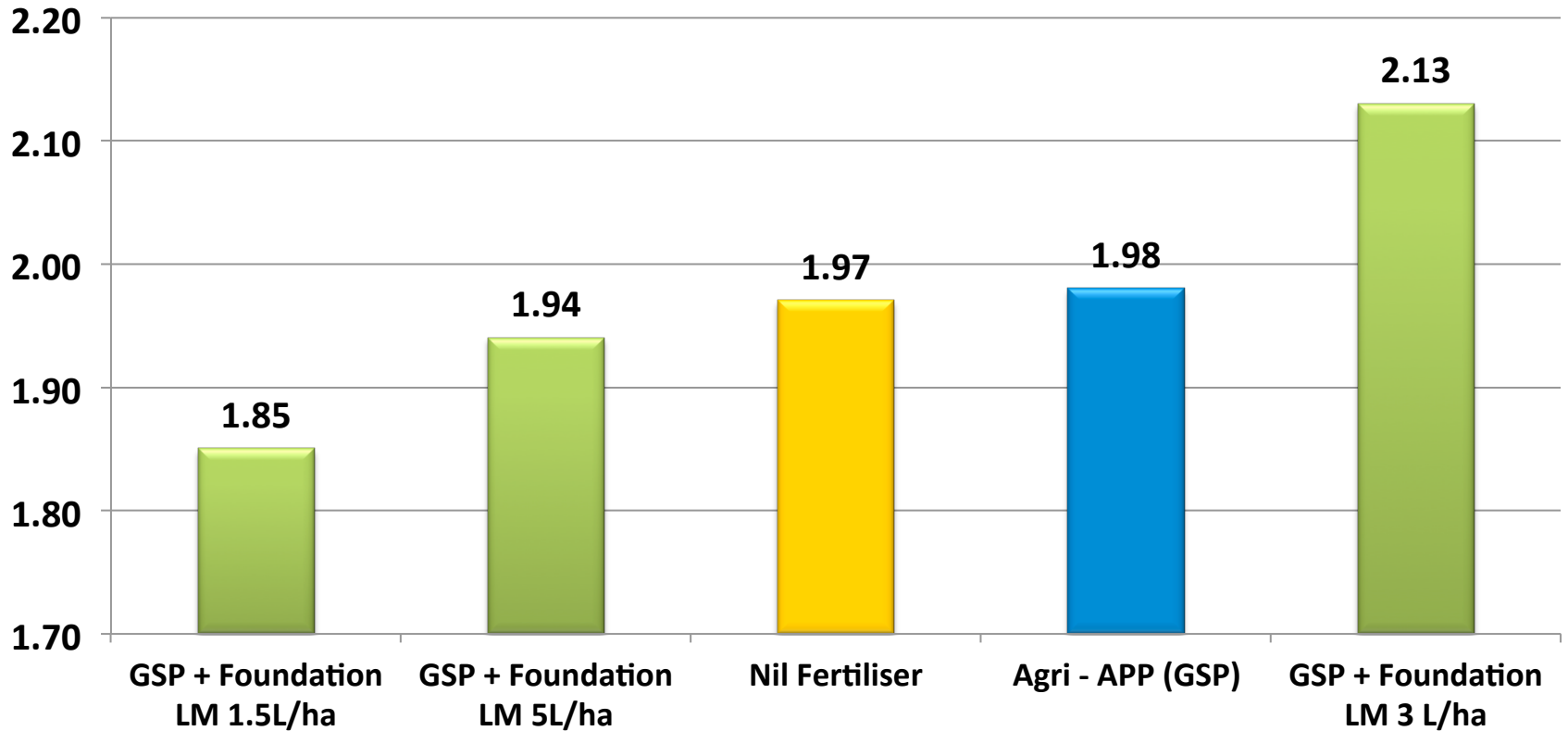
Agri – APP: 15-28-0 w/v

Canola Yield - T/ha

Treatment	Rate/ha	Yield T/ha	Oil %
Nil Fertiliser	----	1.97	41.2
Agri - APP (GSP)	20 L	1.98	41.0
GSP + Foundation LM	20 L + 1.5 L	1.85	41.5
GSP + Foundation LM	20 L + 3 L	2.13	40.4
GSP + Foundation LM	20 L + 5 L	1.94	40.5

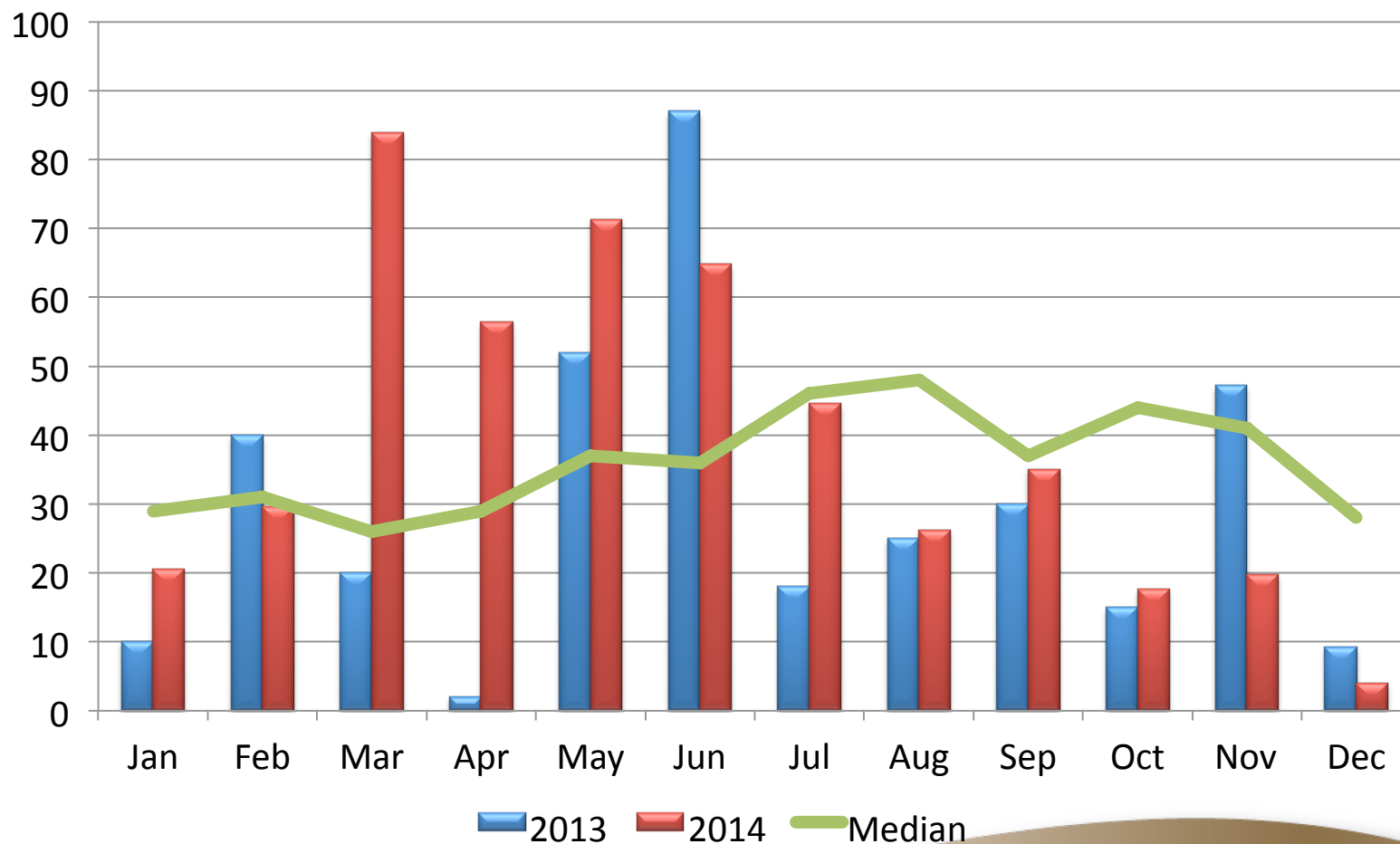
LSD (P=.05) = 0.135 CV = 8.3

Canola Yield - T/Ha



LSD (P=.05) = 0.135 CV = 8.3

Temora Research Station - Rainfall



Conclusions

- Trial sown via plot seeder with liquid injected 15mm below the seed a total liquid volume of 100L/ha applied with each liquid treatment.
- All treatments suffered frost damage in July/August and again in September.
- Nil fertiliser was the best treatment at emergence. This occurrence was short lived with all Fertiliser treatments quickly overtaking it.
- As the trial progressed 3L/ha of Foundation LM appeared the best and this was reflected in final yield.
- No significant differences for Oil % bonus. Treatment effect had little bearing on Oil % all treatments below the 42% threshold.