

2014 Loveland Agri Products Trial Data

LoKomotive & LPI6225 - foliar trial
Canola - Temora, NSW

Trial Setup

- Fully randomised & replicated plot work – 6 replicates
- Plot size = 10 m X 1.76 m
- Treatments applied – Foliar: 03/07/2014

Planting date	23/04/2014
Site	Temora Research Station
Variety	PAC 559 TT @ 3 kg/ha
GSP	MAP 80 kg/ha + Flutriafol 3 L/T Urea 150 kg/ha (5-8 leaf)

Trial Protocol

Treatment	Rate/ha	Timing
GSP = (Control)	----	----
GSP + LPI6225	1 L	Late Cabbage
GSP + LoKomotive	10 L	Late Cabbage
GSP + LPI6225 + LoKomotive	1 L + 10 L	Late Cabbage

LoKomotive: 3-0-27 w/v

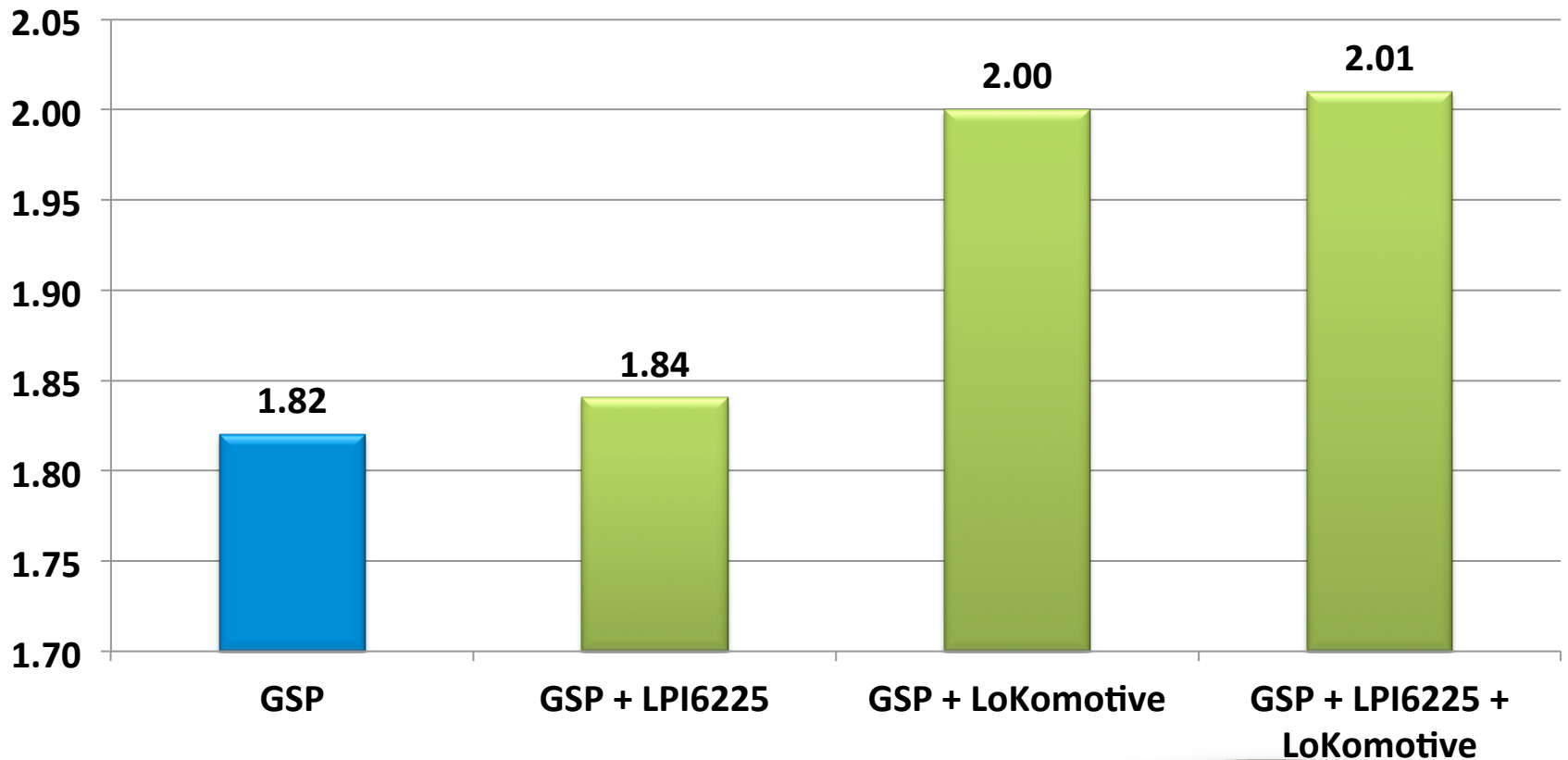
LPI6225: 1-0-0 w/v

Canola Yield - T/ha

Treatment	Rate/ha	Yield T/ha	Oil %
GSP = (Control)	----	1.82	40.6
GSP + LPI6225 - late cabbage stage	1 L	1.84	43.8
GSP + LoKomotive - late cabbage stage	10 L	2.00	43.6
GSP + LPI6225 + LoKomotive - late cabbage stage	1 L + 10 L	2.01	43.8

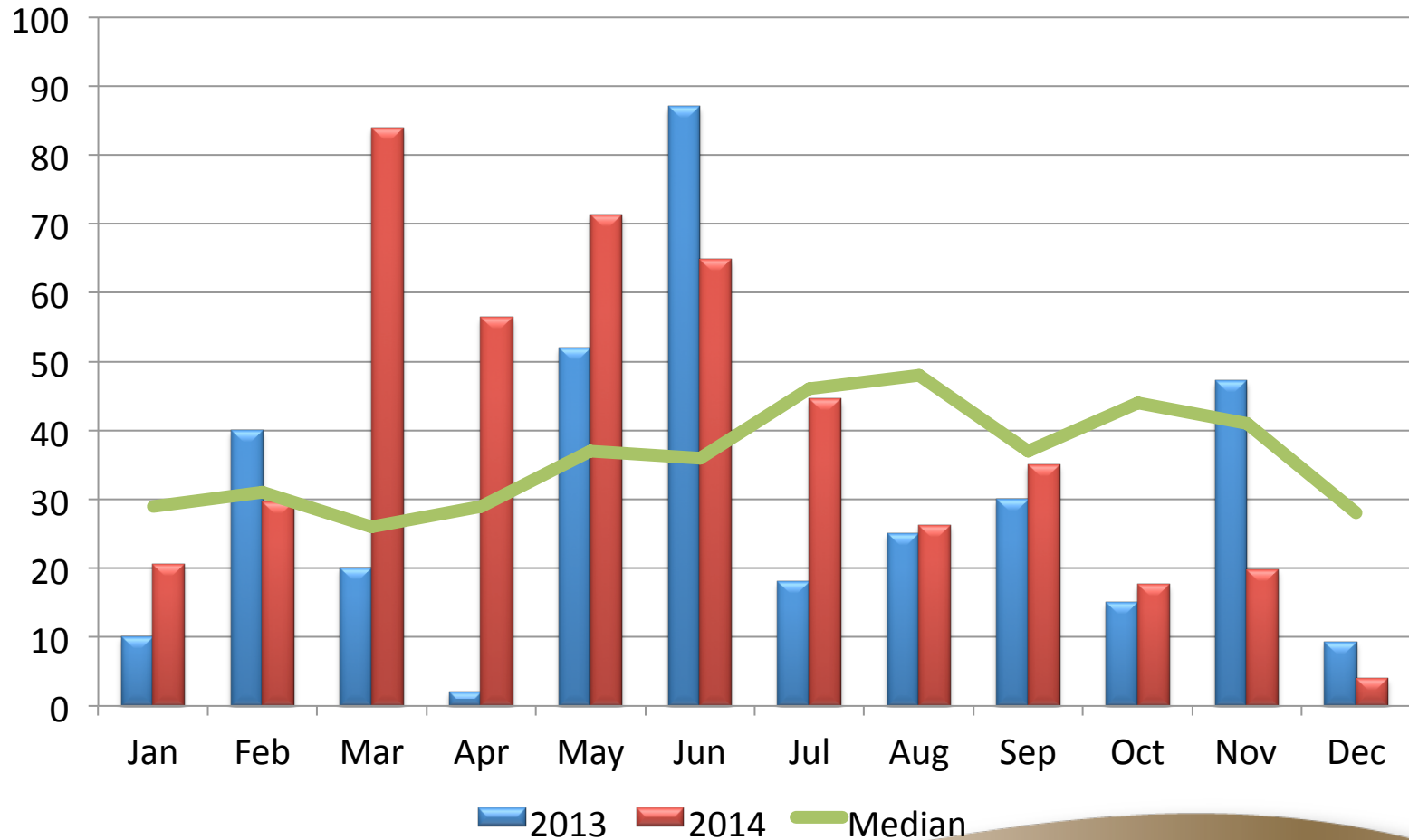
LSD (P=.05) = 0.560 CV = 20.7

Canola Yield - T/Ha



LSD (P=.05) = 0.560 CV = 20.7

Temora Research Station - Rainfall



Conclusions

- Trial conducted at Temora in Sth NSW grown in a season which experienced ideal seeding and early season growth, unfortunately from August on the site received below average rainfall and a late frost event.
- Treatments were applied at late cabbage stage and just prior to bud initiation to coincide with an expected stress event this came in the form of frost which occurred over a 14 day period 10 days post spray.
- LoKomotive was the pick of the treatments, the addition of LPI6225 would have been unlikely to be an economic advantage.
- All treatments were superior to GSP for Oil % with all treatments receiving 150 kg/ha of Urea (5-8 leaf) the treatments obviously had some effect.
- LoKomotive would appear to be a suitable addition to a canola nutrition program in Sth NSW.