

2014 Loveland Agri Products Trial Data

Maximum N-Pact foliar trial - Canola
Parkes, NSW

Trial Setup

- Fully randomised & replicated plot work – 6 replicates
- Plot size = 10 m X 1.76 m

Planting date	12 th May 2015
Site	Parkes - NSW
Variety	Hyola 450 TT @ 2.5kg/ha
GSP	MAP + 2% Zn 60 kg/ha

Trial Protocol

Treatment	Rate/ha	Timing
GSP	----	----
GSP + Maximum N-Pact	10 L	3 – 6 Leaf
GSP + UAN	40 L	3 – 6 Leaf
GSP + Maximum N-Pact	10 L	Prior to stem elongation
GSP + UAN	40 L	Prior to stem elongation
GSP + Maximum N-Pact	10 L	End of Flowering
GSP + UAN	40 L	End of Flowering

Maximum N-Pact: 29-0-0 w/v

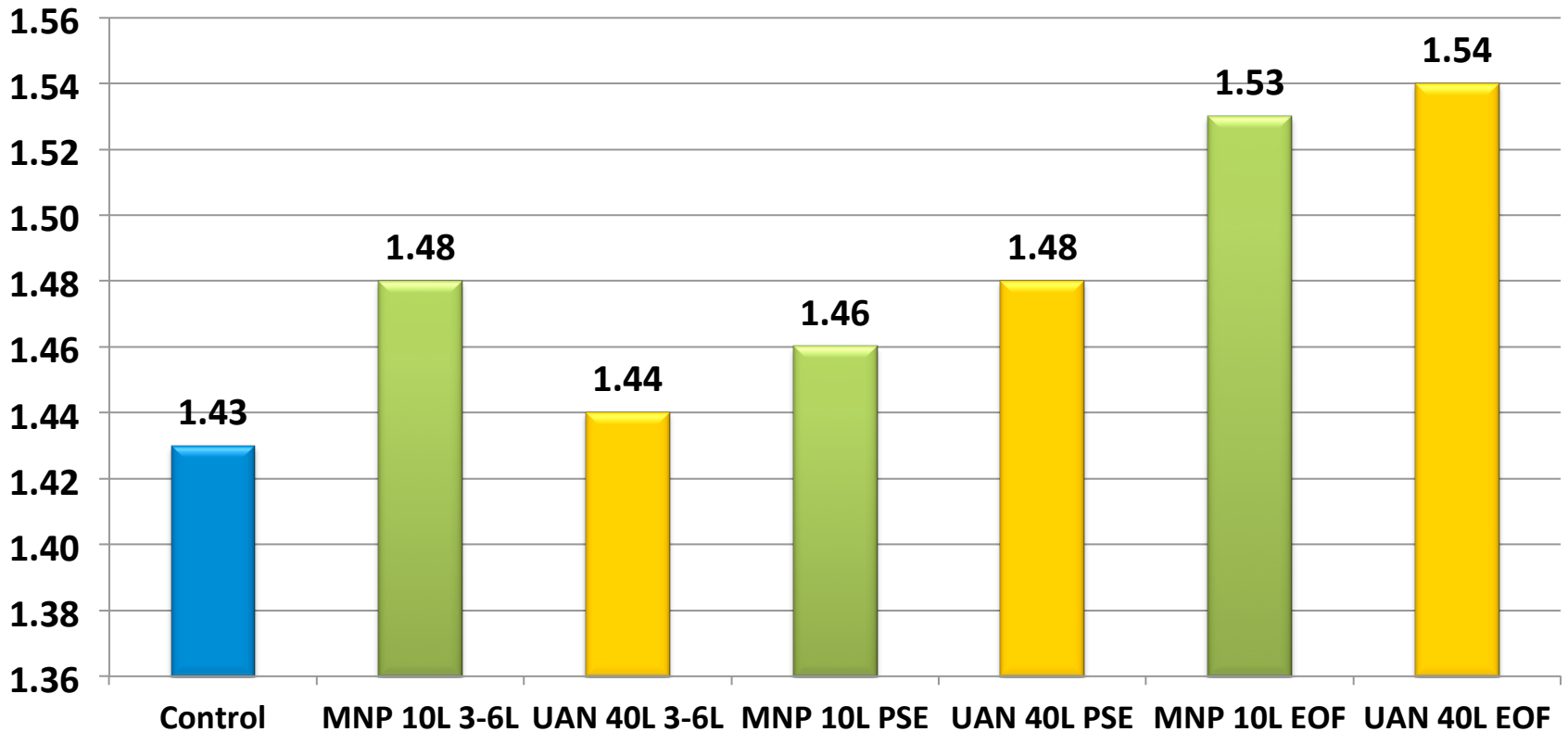
UAN: 42-0-0 w/v

Canola Yield - T/ha

Treatment	Rate/ha	Yield T/ha	Oil %
GSP	----	1.43	42.6
GSP + Maximum N-Pact 3 – 6 leaf	10 L	1.48	42.7
GSP + UAN 3 – 6 leaf	40 L	1.44	42.9
GSP + Maximum N-Pact - prior to stem elongation	10 L	1.46	42.7
GSP + UAN - prior to stem elongation	40 L	1.48	42.4
GSP + Maximum N-Pact – end of flowering	10 L	1.53	42.8
GSP + UAN – end of flowering	40 L	1.54	42.6

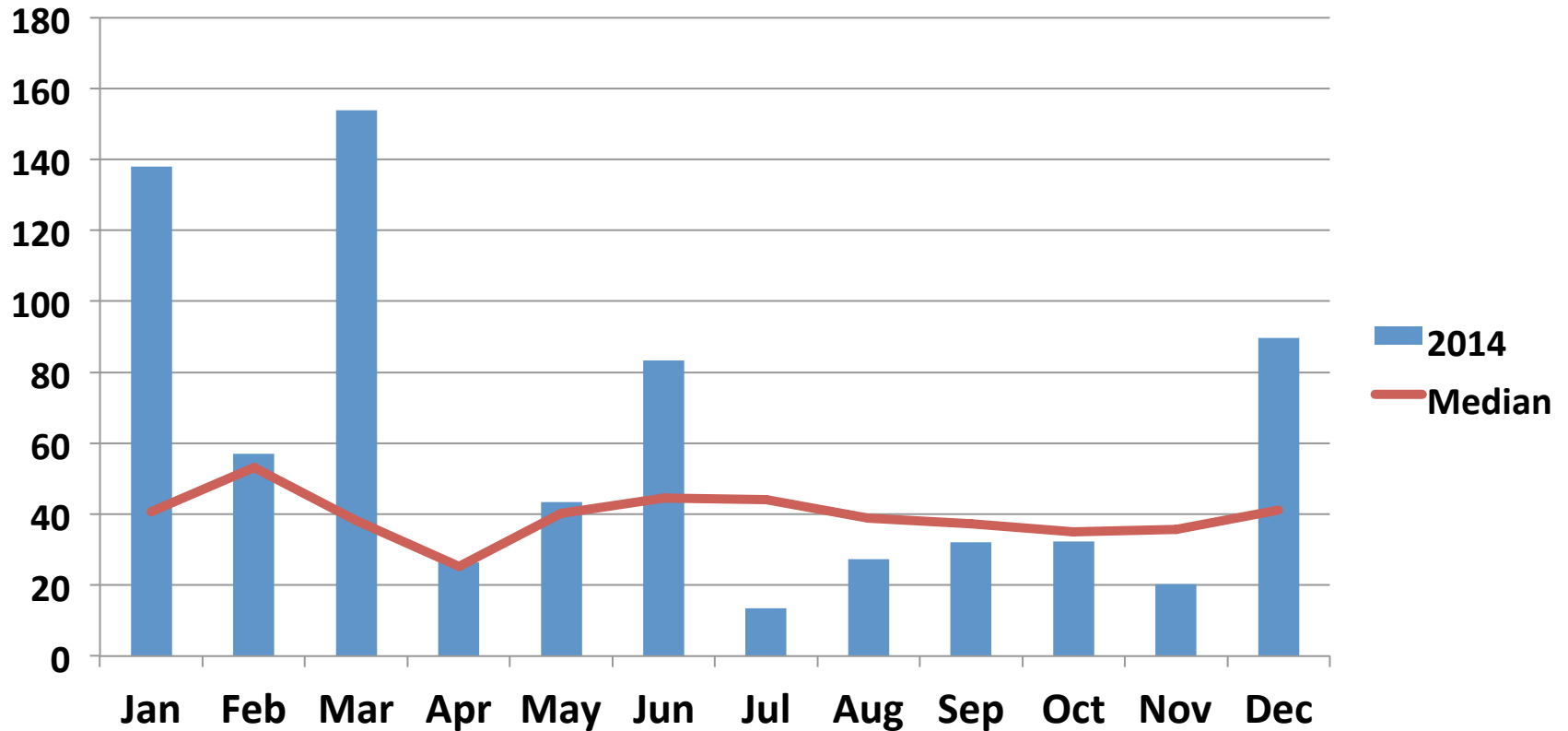
LSD (P=.05) = 0.335 CV = 15.3

Canola Yield - T/Ha



LSD (P=.05) = 0.335 CV = 15.3

Parkes – Rainfall (mm)



Conclusions

- Early application of Maximum N Pact looks useful
- 10L/ha Maximum N Pact appears equivalent to 40L/ha UAN as has been observed in other replicated trials.
- Late season applications of Maximum N Pact are safer than UAN due to less risk of petal burn.
- Maximum N Pact has good compatibility with tank mix partners providing the opportunity for a one pass trip for the grower.