



Loveland

AGRI PRODUCTS
Get Growing

2015 WA Trial Data
Basis in Barley, Moora, WA.

Trial Setup

- Fully randomised & replicated plot work – 3 replicates
- Plot size = 18m X 1.6m
- Treatments applied – K Till, Basis
- Application Date – 21st May 2015 @ seeding.

Planting Date	21 st May 2015
Site	Moora, WA.
Variety	Scope Barley @ 60 kg/ha
Protocol	K Till +/- Basis @ 4 L/t @ seeding
GSP	K Till @ 50 kg/ha

Trial Protocol

Treatment #	Treatment	Applied Rate
T1	Untreated – Nil Fertiliser	----
T2	K Till	50 kg/ha
T3	K Till + Basis	50 kg/Ha + 4 L/t
T4	K Till	100 kg/ha
T5	K Till + Basis	100 kg/ha + 4 L/t

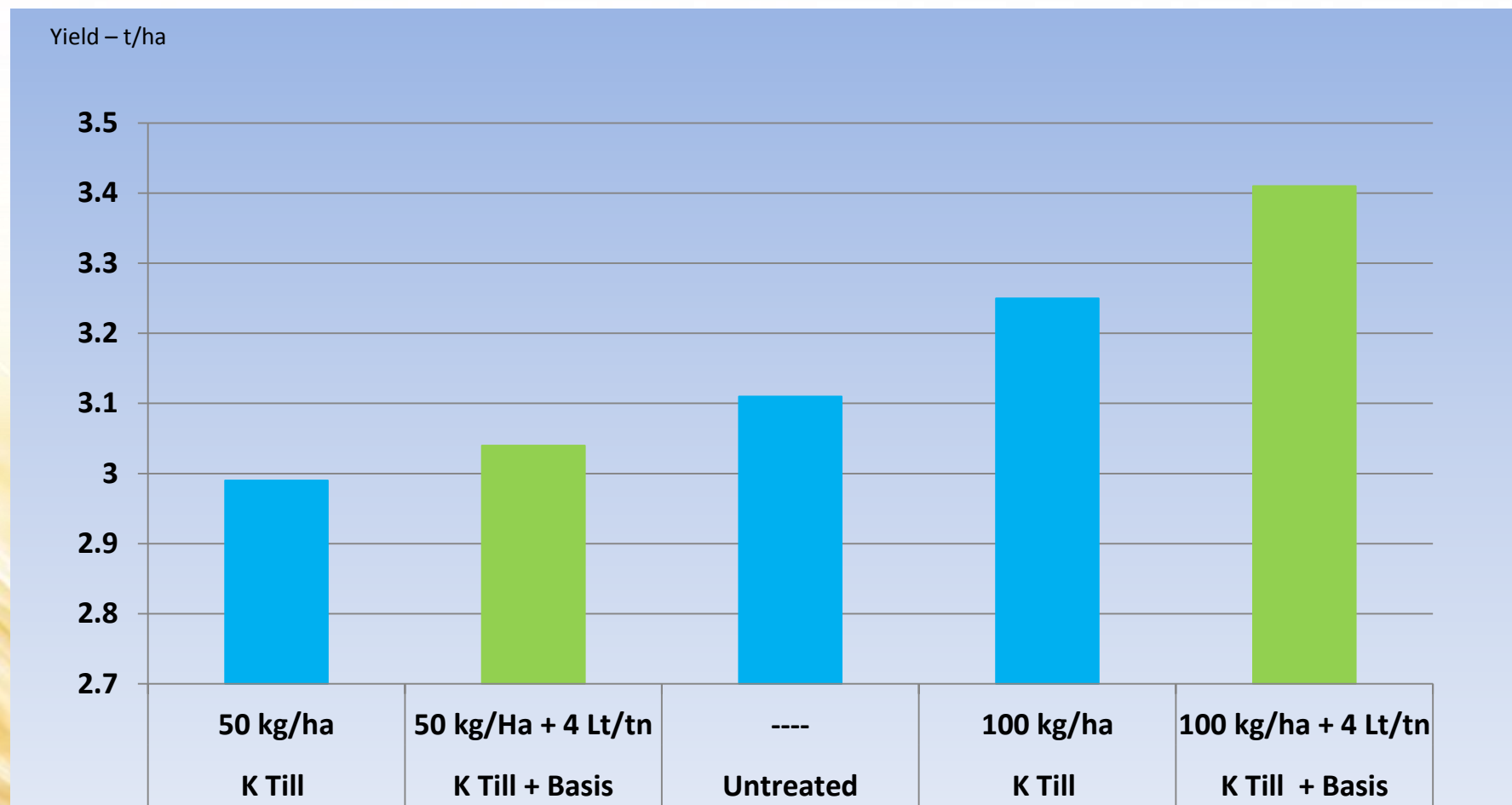
K Till : 5-12-12-3

Barley Yield

Treatment #	Treatment	Applied Rate	Grain Yield – t/ha
T1	Untreated	----	3.11
T2	K Till	50 kg/ha	2.99
T3	K Till + Basis	50 kg/Ha + 4 Lt/tn	3.04
T4	K Till	100 kg/ha	3.25
T5	K Till + Basis	100 kg/ha + 4 Lt/tn	3.41

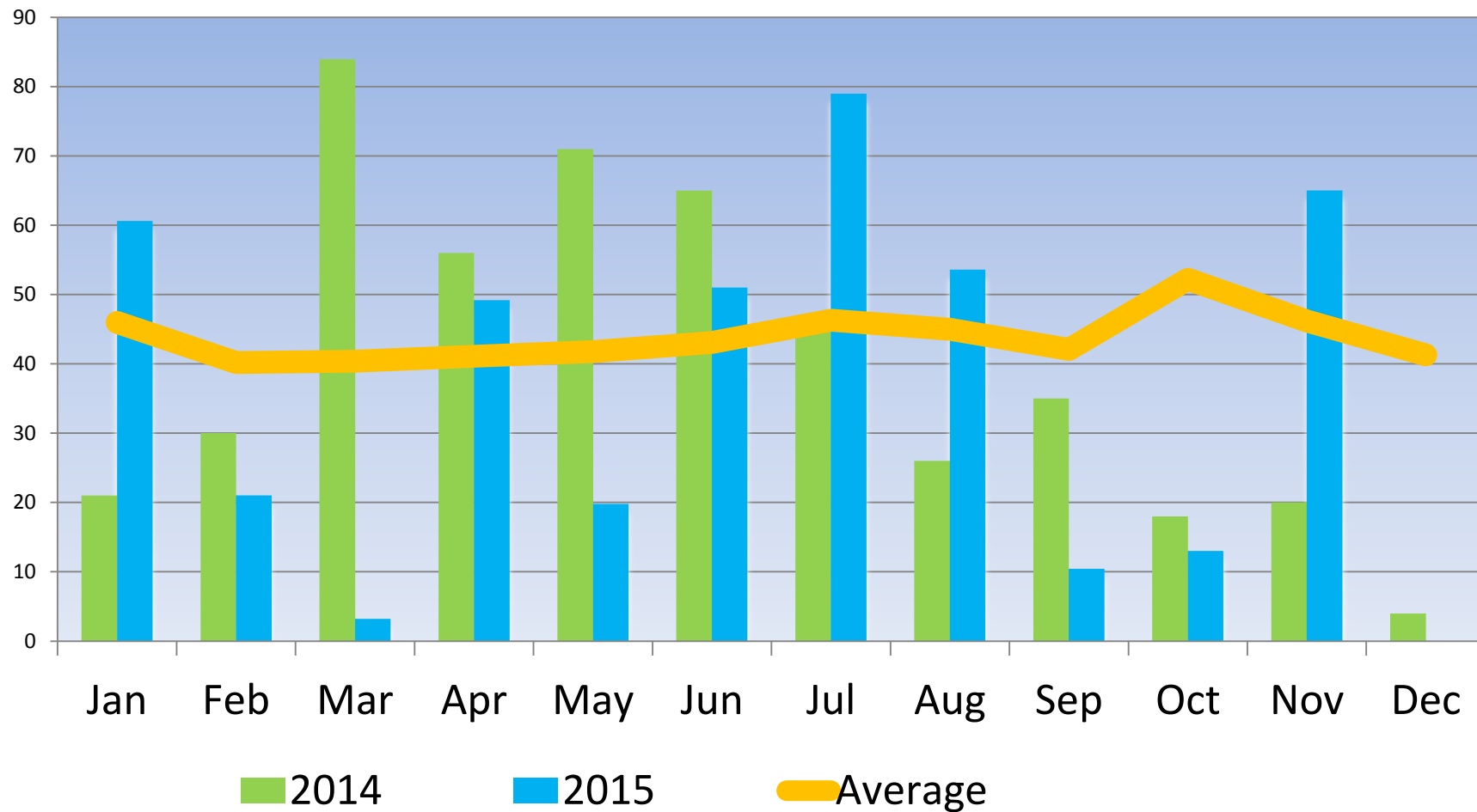
LSD (P=.05) = 0.241 CV = 4.06

Barley Yield – t/ha



LSD (P=.05) = 0.241 CV = 4.06

Moora Rainfall



Conclusions

- This site had good P levels, although soil test not supplied.
- Good growing conditions were experienced at Moora in 2015
- Although not significant, there has been a small improvement from Basis at both rates of fertiliser in this trial.

