

2015 Loveland Agri Products Trial Data

Precept with Adjuvants

Barley - Temora, NSW

Lov15_30

Trial Setup

- Fully randomised & replicated plot work – 4 replicates
- Plot size = 10m X 2.5m
- Treatments applied – Precept (Pyrasulfotole + MCPA)
- Spraying Date – 7th July 2015
- Crop Growth Stage – Z 13 – 22
- Target Pest – Indian Hedge Mustard, Shepherds Purse.

Spraying Date	7th July 2015
Site	Temora Research Station
Variety	La Trobe Barley @ 60kg/ha
Protocol	Precept 150 +/- Liberate, Hasten, MSO or Uptake
GSP	Precept + Hasten @ 1.0%

Trial Protocol

Treatment #	Treatment	Applied Rate
T1	Untreated	----
T2	Precept 150 + Liberate	1500 ml/ha + 0.5%
T3	Precept 150 + Hasten	1500 ml/ha + 1.0%
T4	Precept 150 + MSO Leci Tech	1500 ml/ha + 1.0%
T5	Precept 150 + Uptake	1500 ml/ha + 0.5%

Precept - 50 g/L Pyrasulfotole + 250 g/L MCPA

Crop Assessments

Treatment	Applied Rate	Phyto 7 DAA	Phyto 14 DAA	Biomass Reduction 7 DAA	Biomass Reduction 14 DAA
Untreated / Control	----	0	0	0	0
Liberate	0.5%	0	0	0	0
Hasten	1.0%	0	0	0	0
MSO	1.0%	0	0	0	0
Uptake	0.5%	0	0	0	0

..

Plant Death % Control - Combined

Treatment	Applied Rate	7 DAA	14 DAA
Untreated / Control	----	0.00	0.00
Liberate	0.5%	39.48	54.79
Hasten	1.0%	33.75	40.00
MSO	1.0%	37.50	43.75
Uptake	0.5%	35.00	53.75
	LSD (P=0.5)	10.57	10.19
	CV	23.3	17.03

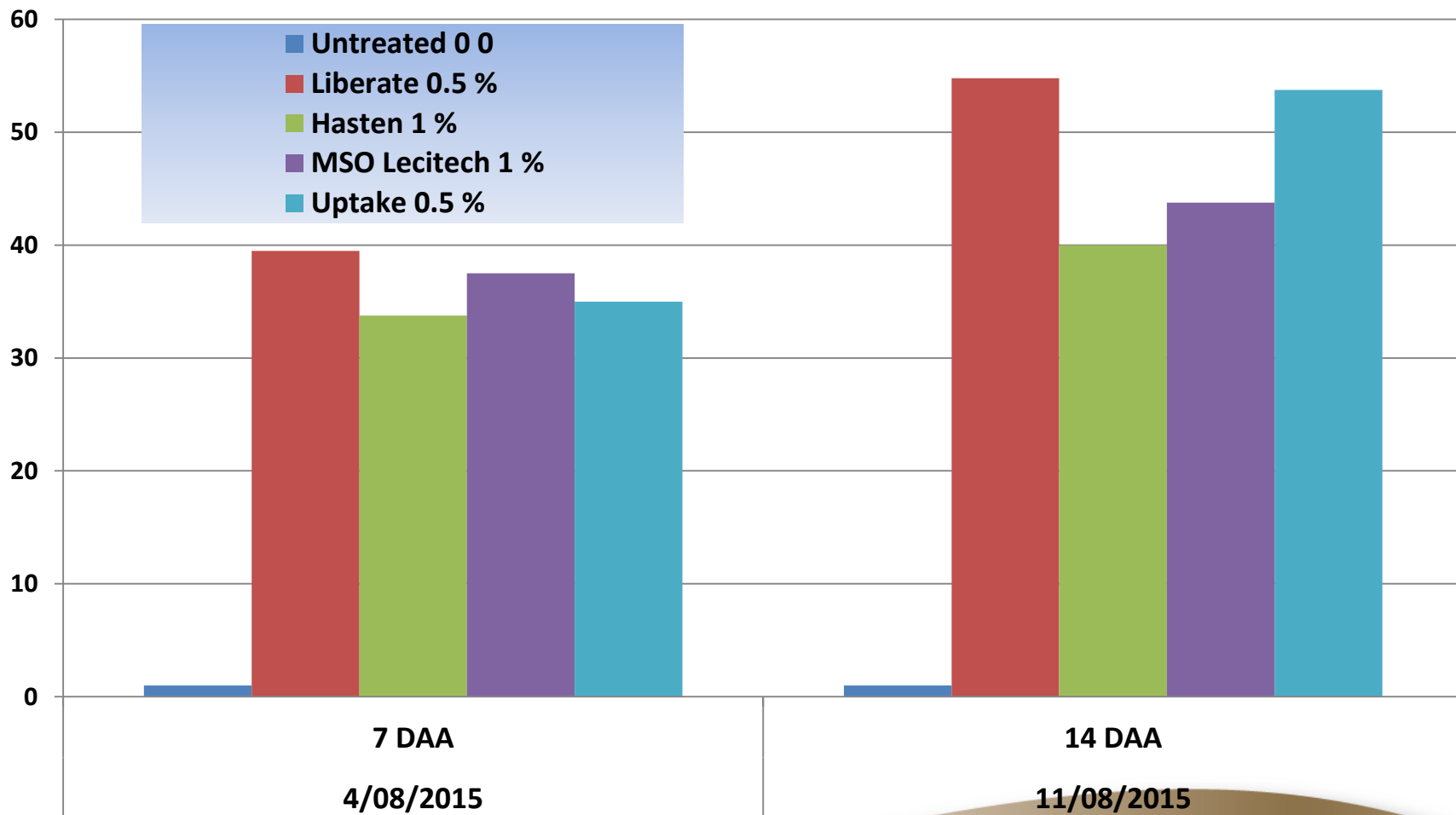
Control % - Shepherds Purse

Treatment	Rate/ha	21 DAA	35 DAA
Untreated / Control	----	0.00	0.00
Liberate	0.5%	31.22	96.67
Hasten	1.0%	26.17	98.75
MSO	1.0%	21.15	97.50
Uptake	0.5%	27.39	98.75
	LSD (P=.05)	0.104t	3.51
	CV	5.91	2.88

Control % - IH Mustard

Treatment	Rate/ha	21 DAA	35 DAA
Untreated / Control	----	0.00	0.00
Liberate	0.5%	81.25	91.88
Hasten	1.0%	75.00	92.50
MSO	1.0%	72.50	93.75
Uptake	0.5%	76.25	96.25
	LSD (P=.05)	5.120	5.819
	CV	5.45	4.99

Plant Death % Control - Combined



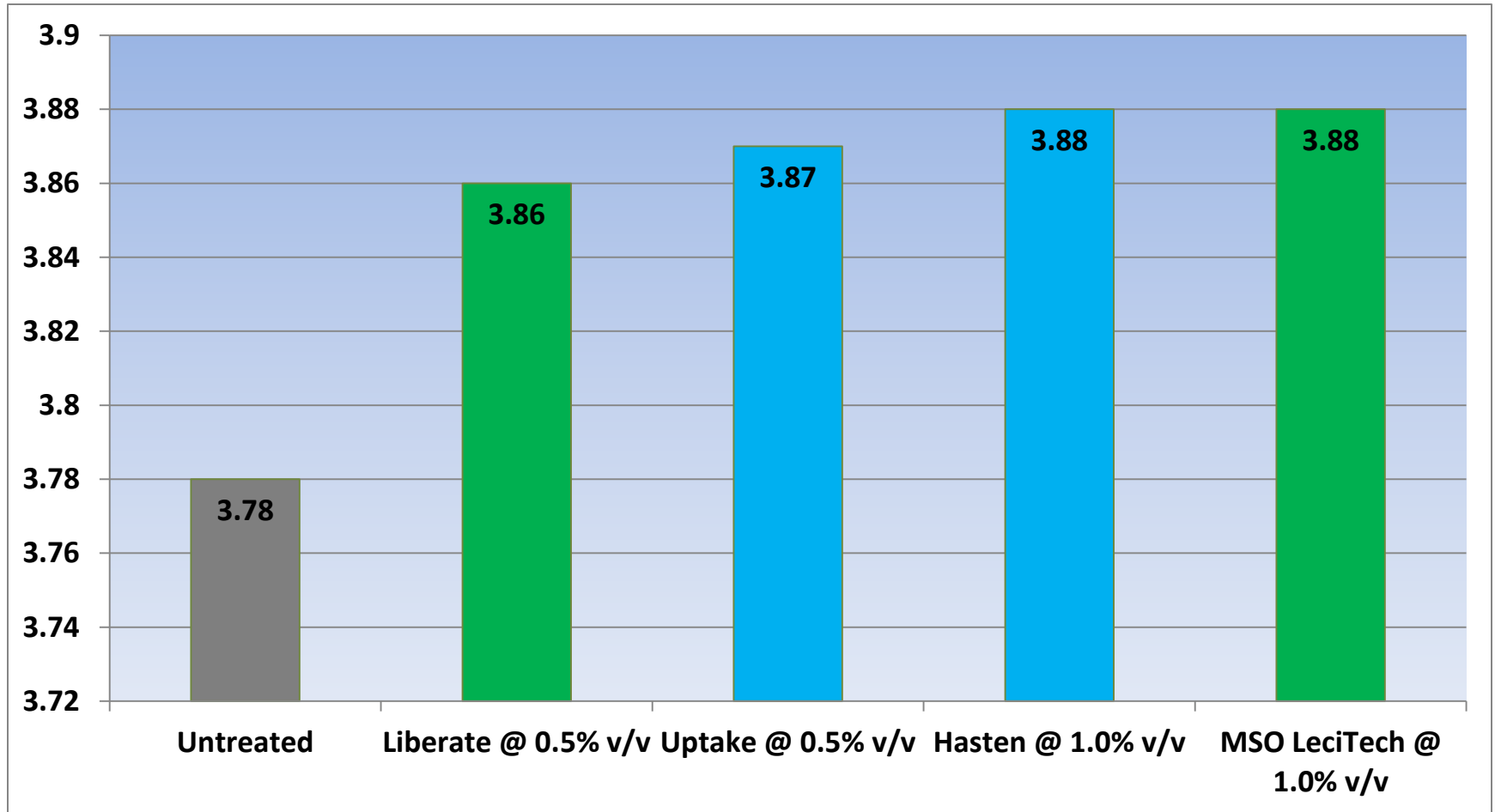
Barley Yield - t/ha

Treatment	Treatment	Rate/ha	Yield t/ha
T1	Untreated	----	3.78
T2	Precept 150 + Liberate	1500 ml/ha + 0.5%	3.86
T3	Precept 150 + Hasten	1500 ml/ha + 1.0%	3.88
T4	Precept 150 + MSO Leci Tech	1500 ml/ha + 1.0%	3.88
T5	Precept 150 + Uptake	1500 ml/ha + 0.5%	3.87

LSD (P=.05) = 0.367 CV = 6.18

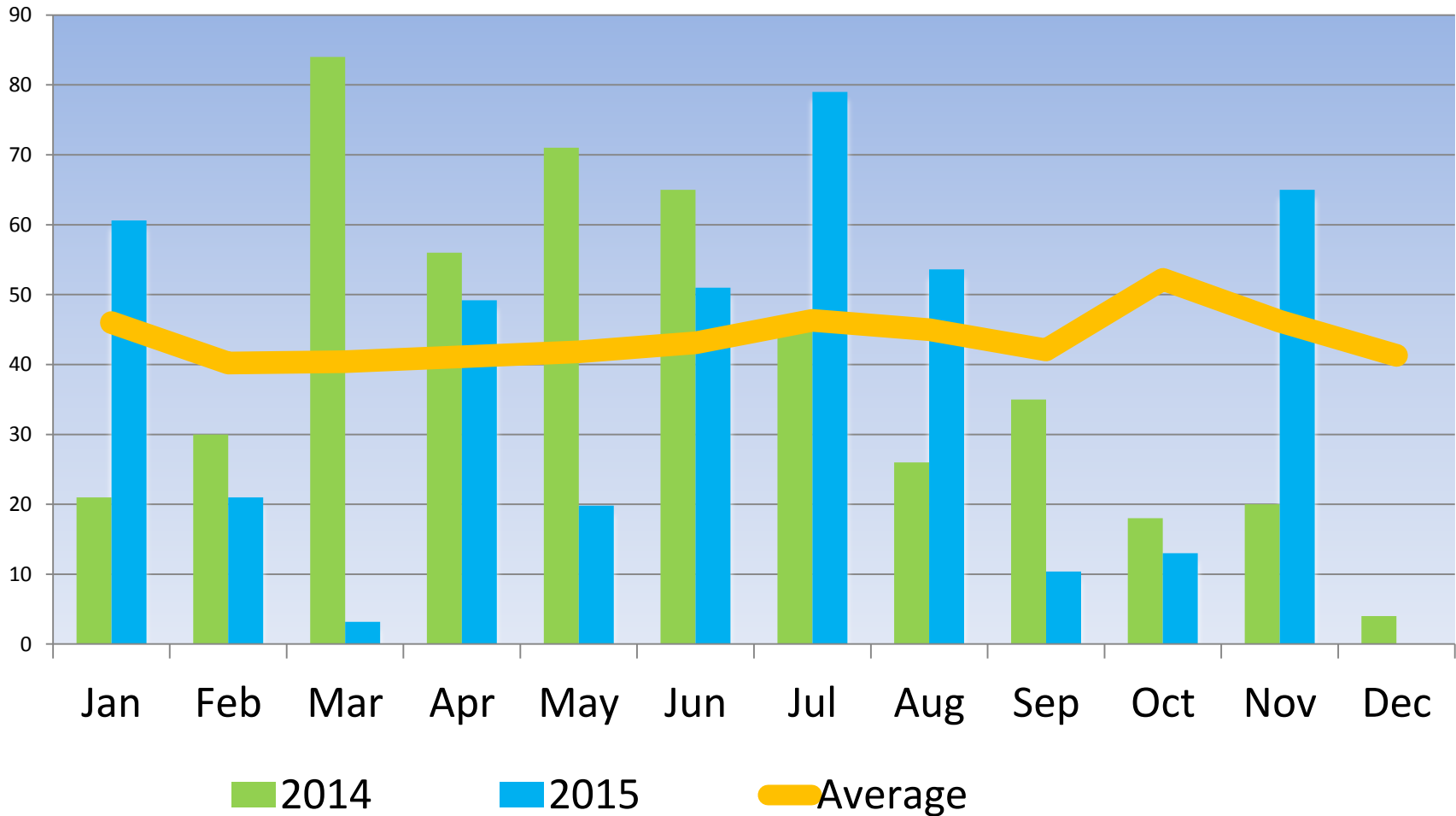
2015 Trial Data

Barley Yield – t/ha



LSD (P=.05) = 0.367 CV = 6.18

Temora Research Station - Rainfall



Conclusions

- No Phytotoxicity seen.
- No biomass reduction observed.
- Weeds assessed as % control combined up until 21DAA, a decision was made to separate Shepherds purse and Mustard as slight differences were appearing.
- Weed population was considered to be low hence the higher than anticipated yield for UTC.
- Both Liberate and MSO Lecitech would be considered suitable alternatives to Hasten and Uptake when applied in a tank mix with Precept.