

2015 Loveland Agri Products Trial Data

Paradigm with Adjuvants

Barley - Temora, NSW

Lov15_33

Trial Setup

- Fully randomised & replicated plot work – 4 replicates
- Plot size = 10m X 2.5m
- Treatments applied – Paradigm (Florasulam & Halauxifen)
- Spraying Date – 7th July 2015
- Crop Growth Stage – Z 13 – 22
- Target Pest – Mustard, Shepherds Purse..

Spraying Date	7th July 2015
Site	Temora Research Station
Variety	La Trobe Barley @ 60kg/ha
Protocol	Paradigm +/- Liberate, Hasten, MSO or Uptake
GSP	Paradigm + Uptake

Trial Protocol

Treatment #	Treatment	Applied Rate
T1	Untreated	----
T2	Paradigm + Liberate	25 gm/ha + 0.5%
T3	Paradigm + Hasten	25 gm/ha + 1.0%
T4	Paradigm + MSO Leci Tech	25 gm/ha + 1.0%
T5	Paradigm + Uptake	25 gm/ha + 0.5%

Paradigm - 200 g/L Florasulam & 200 g/L Halauxifen.

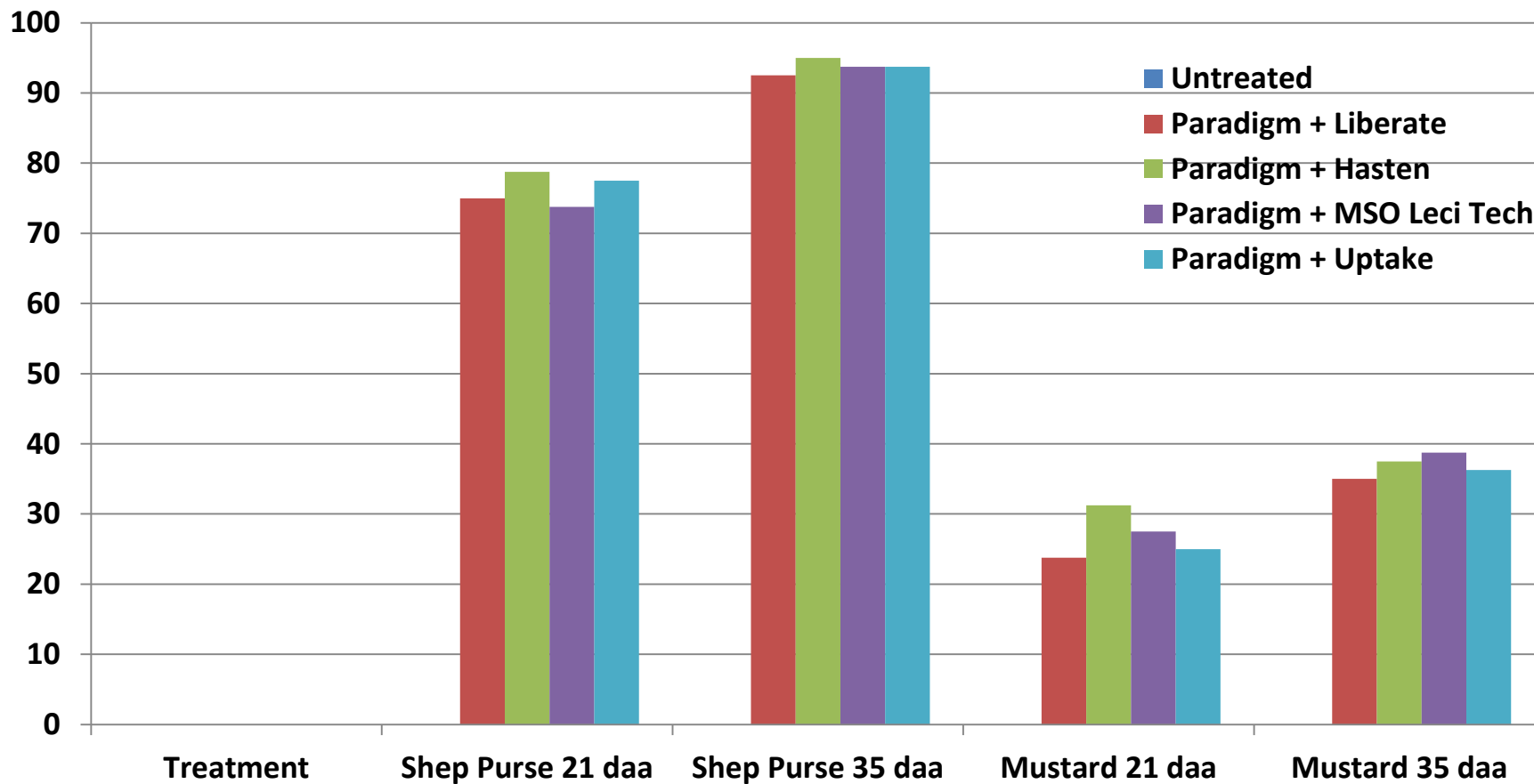
Phytotoxicity & Biomass Reduction

Treatment	Rate/ha	Phyto 7 daa	Phyto 14 daa	Biomass 7 daa	Biomass 14 daa
Untreated	----	0	0	0	0
Paradigm + Liberate	0.5%	0	0	3.75	0
Paradigm + Hasten	1.0%	0	0	2.5	0
Paradigm + MSO Leci Tech	1.0%	0	0	3.75	0
Paradigm + Uptake	0.5%	1.25	0	6.25	0
	LSD	1.723		5.757	
	CV	447.21		114.96	

Plant Death % - Shep Purse & Mustard

Treatment	Rate/ha	Shep Purse 21 DAA	Shep Purse 35 DAA	Mustard 21 DAA	Mustard 35 DAA
Untreated	----	0.00	0.00	0.00	0.00
Paradigm + Liberate	0.5%	75.00	92.50	23.75	35.00
Paradigm + Hasten	1.0%	78.75	95.00	31.25	37.50
Paradigm + MSO Leci Tech	1.0%	73.75	93.75	27.50	38.75
Paradigm + Uptake	0.5%	77.50	93.75	25.00	36.25
	LSD	6.782	2.536	8.979	10.020
	CV	7.22	2.19	27.1	22.04

Plant Death % - Shep Purse & Mustard



LSD	6.782	2.536	8.979	10.02
CV	7.22	2.19	27.1	22.04

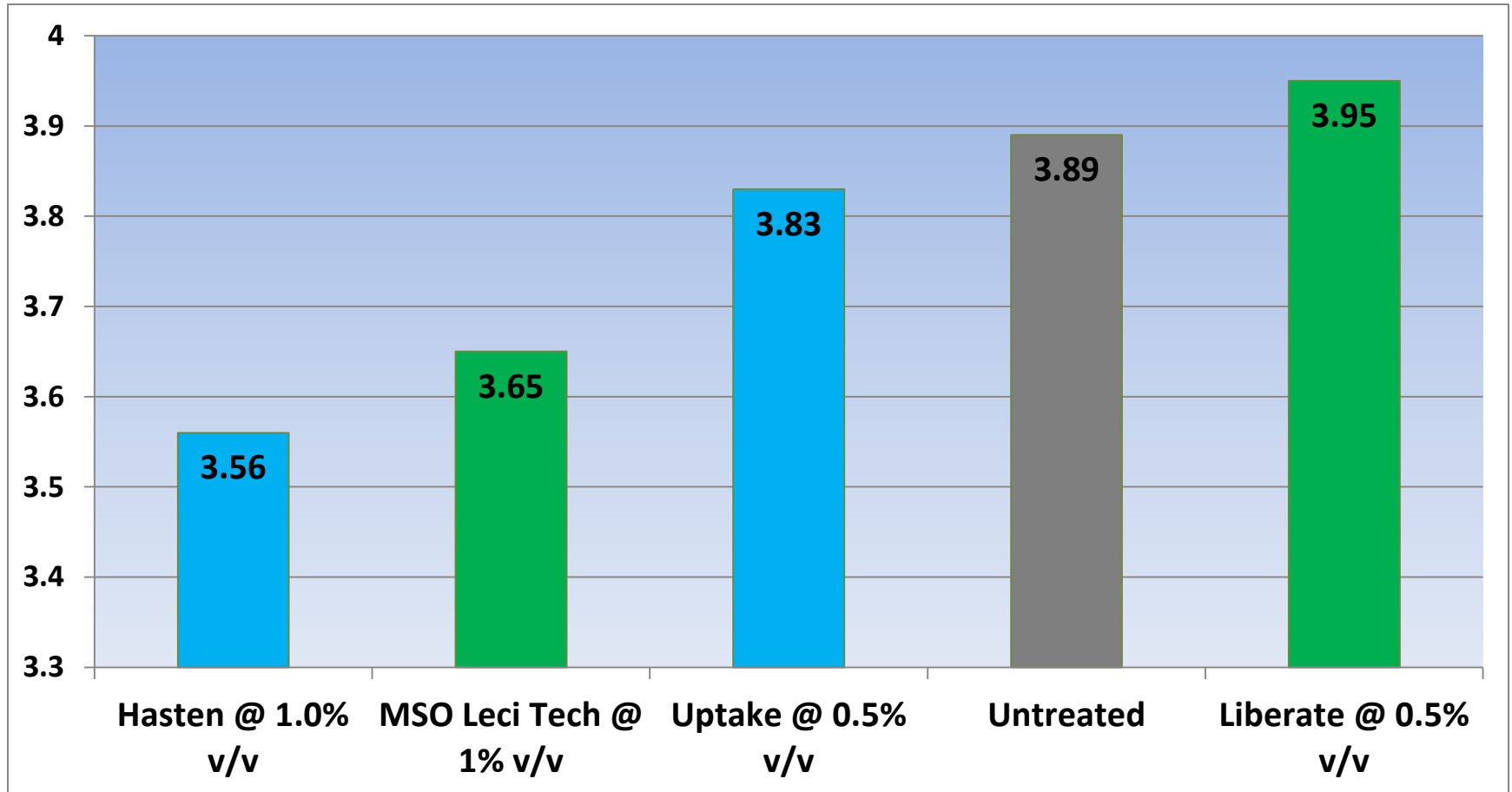
Barley Yield - t/ha

Treatment	Rate/ha	Yield t/ha
Untreated	----	3.89
Paradigm + Liberate	25 gm/ha + 0.5%	3.95
Paradigm + Hasten	25 gm/ha + 1.0%	3.56
Paradigm + MSO Leci Tech	25 gm/ha + 1.0%	3.65
Paradigm + Uptake	25 gm/ha + 0.5%	3.83

LSD (P=.05) = 0.545 CV = 9.37

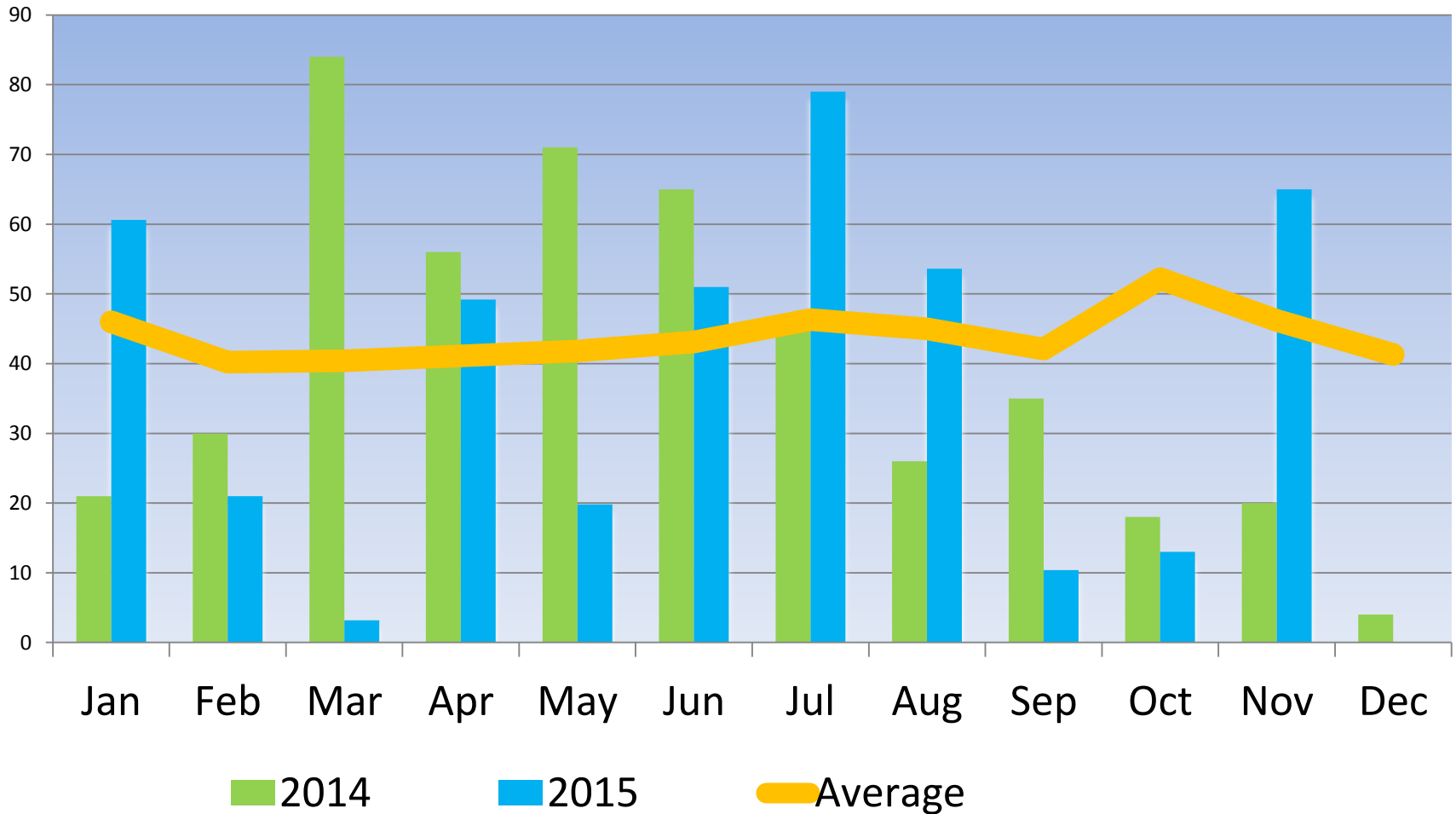
2015 Trial Data

Barley Yield – t/ha



LSD (P=.05) = 0.545 CV = 9.37

Temora Research Station - Rainfall



Conclusions

- No Phytotoxicity observed.
- Minimal biomass seen after 7DAA, but by 14DAA returned to normal.
- Liberate performed similar to Uptake for Shepherds Purse and Mustard control.
- Mustard plants not controlled in this trial would be considered resistant to group B herbicide. Improved control would require MCPA as a mixing partner for improved efficacy.
- Liberate is a suitable alternative to Uptake when applied in a tank mix with Paradigm for control of broadleaf weeds
- MSO is a suitable alternative to Hasten when applied in a tank mix with Paradigm for control of broadleaf weeds