



Loveland

AGRI PRODUCTS
Get Growing

2015 Trial Data

Liquid N Options with fungicide in Canola - Temora, NSW

Trial Setup

- Fully randomised & replicated plot work – 4 replicates
- Plot size = 10 m X 1.76 m
- Treatments applied – fungicide +/- liquid N @ 10 – 30% early flower.
- Application Date - 2nd September 2015

Planting Date	1 st May 2015
Site	Temora Research Station
Variety	559 TT Canola @ 3.0 kg/ha
Protocol	MAP @ 75kgs/ha + Flutriafol 500 @ 200mls/ha 2.0 lt/ha Trifluralin 480 sprayed pre emergent IBS Liquid Nitrogen
GSP	MAP @ 75kgs/ha + Flutriafol 500 @ 200mls/ha

Trial Protocol

Treatment #	Product	Applied Rate
T1	Amistar	800 ml/ha
T2	Aviator	800 ml/ha
T3	Easy N	30 L/ha
T4	Easy N + Aviator	30 L/ha + 800 ml/ha
T5	GSP	----
T6	Max N Pact	10 L/ha
T7	Max N Pact + Amistar	10 L/ha + 800 ml/ha
T8	Max N Pact + Aviator	10 L/ha + 800 ml/ha

Maximum N Pact : 29-0-0 v/v

UAN : 42.5-0-0 v/v

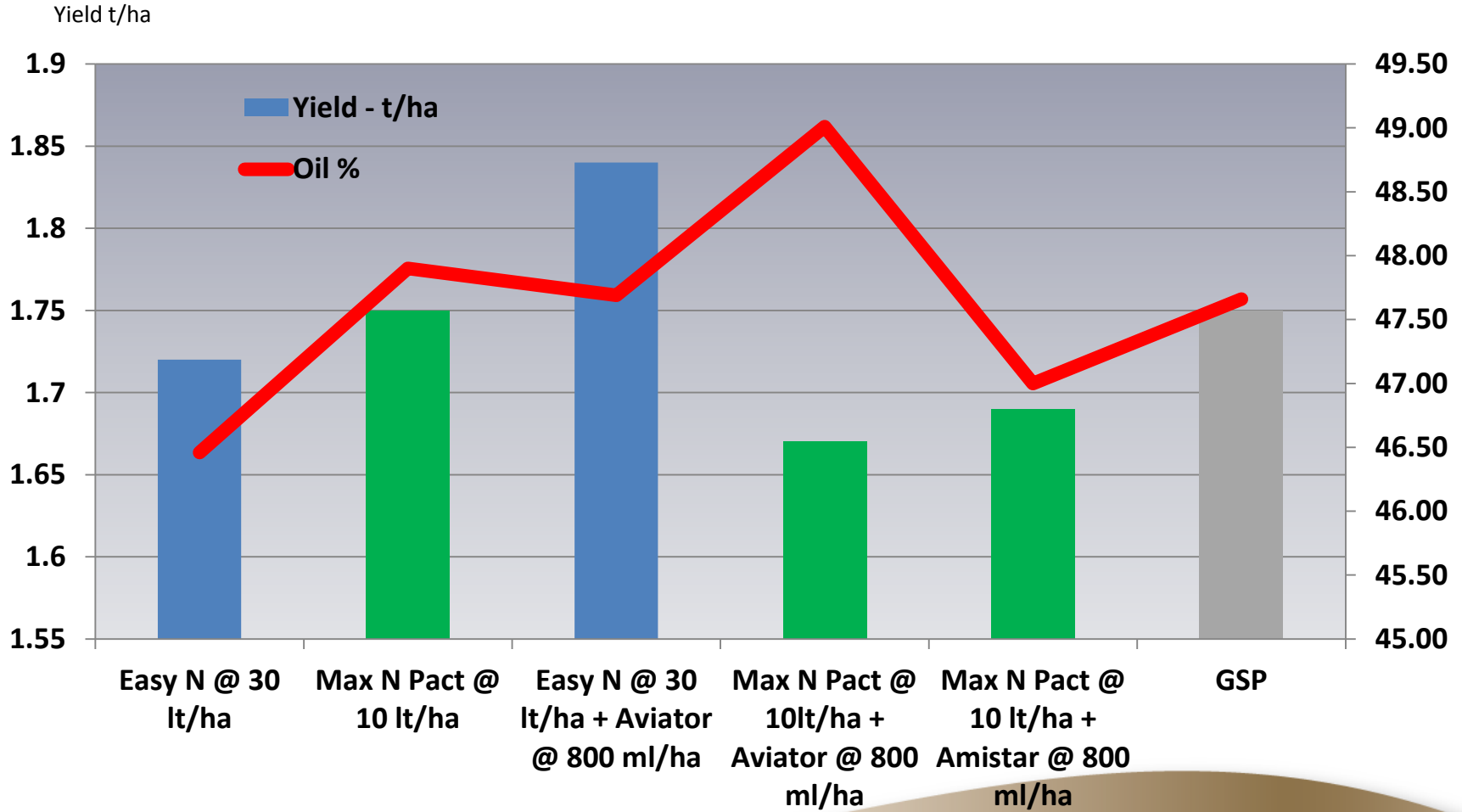
Ranger : 24-0-0-0 – Urea form

Canola Yield - t/ha

Treatment	Product	Rate/ha	Yield t/ha	Oil %
T1	Amistar	800 ml/ha	1.66	46.9
T2	Maximum N Pact + Aviator	10L/ha + 800 ml/ha	1.67	49.0
T3	Maximum N Pact + Amistar	10 L/ha + 800 ml/ha	1.69	47.0
T4	Easy N	30 L/ha	1.72	46.5
T5	GSP	---	1.75	47.7
T6	Maximum N Pact	10 L/ha	1.75	47.9
T7	Easy N + Aviator	30 L/ha + 800 ml/ha	1.84	47.7
T8	Aviator	800 ml/ha	1.86	47.5

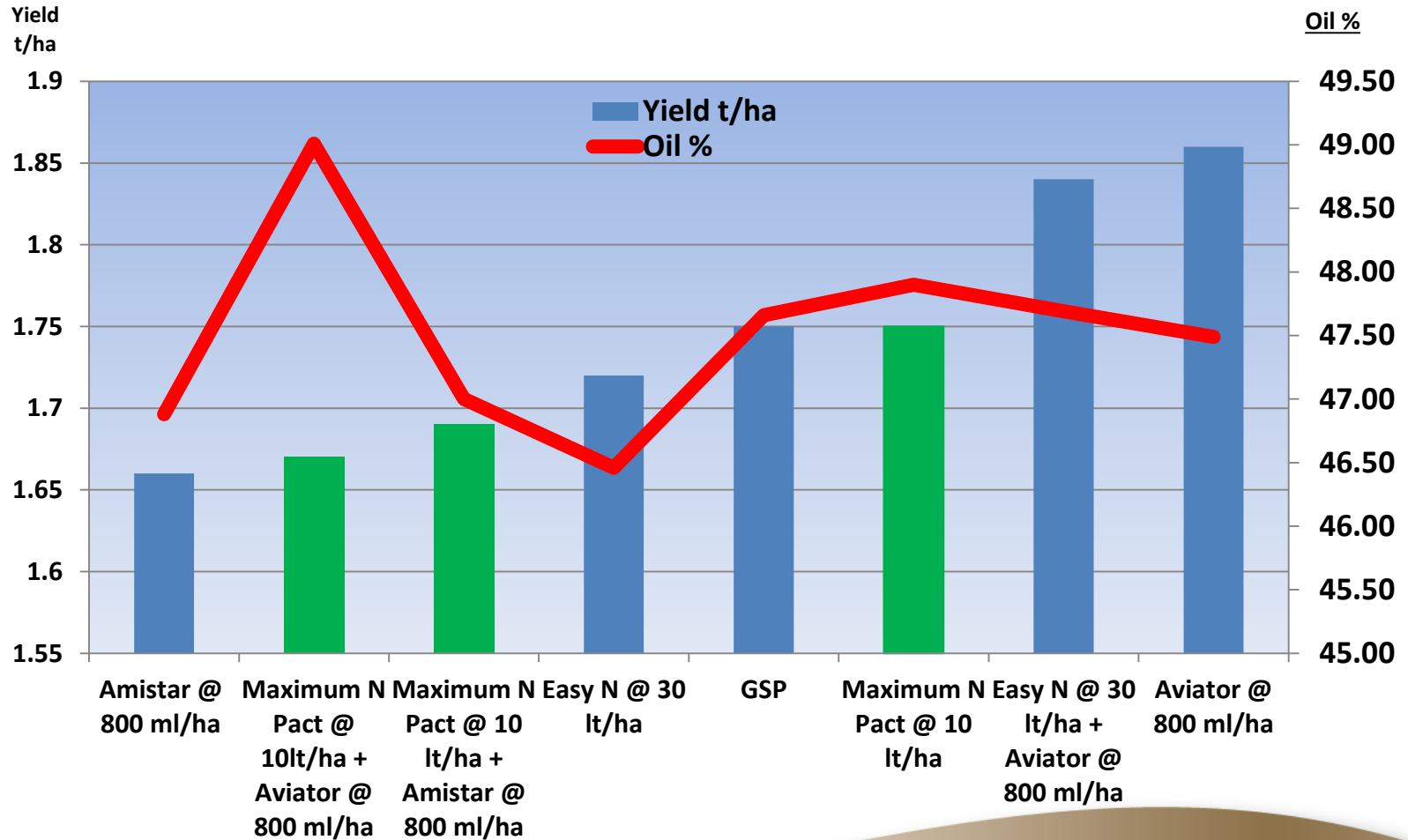
LSD (P=.05) = 0.329 CV = 6.57

Max N pact vs Easy N



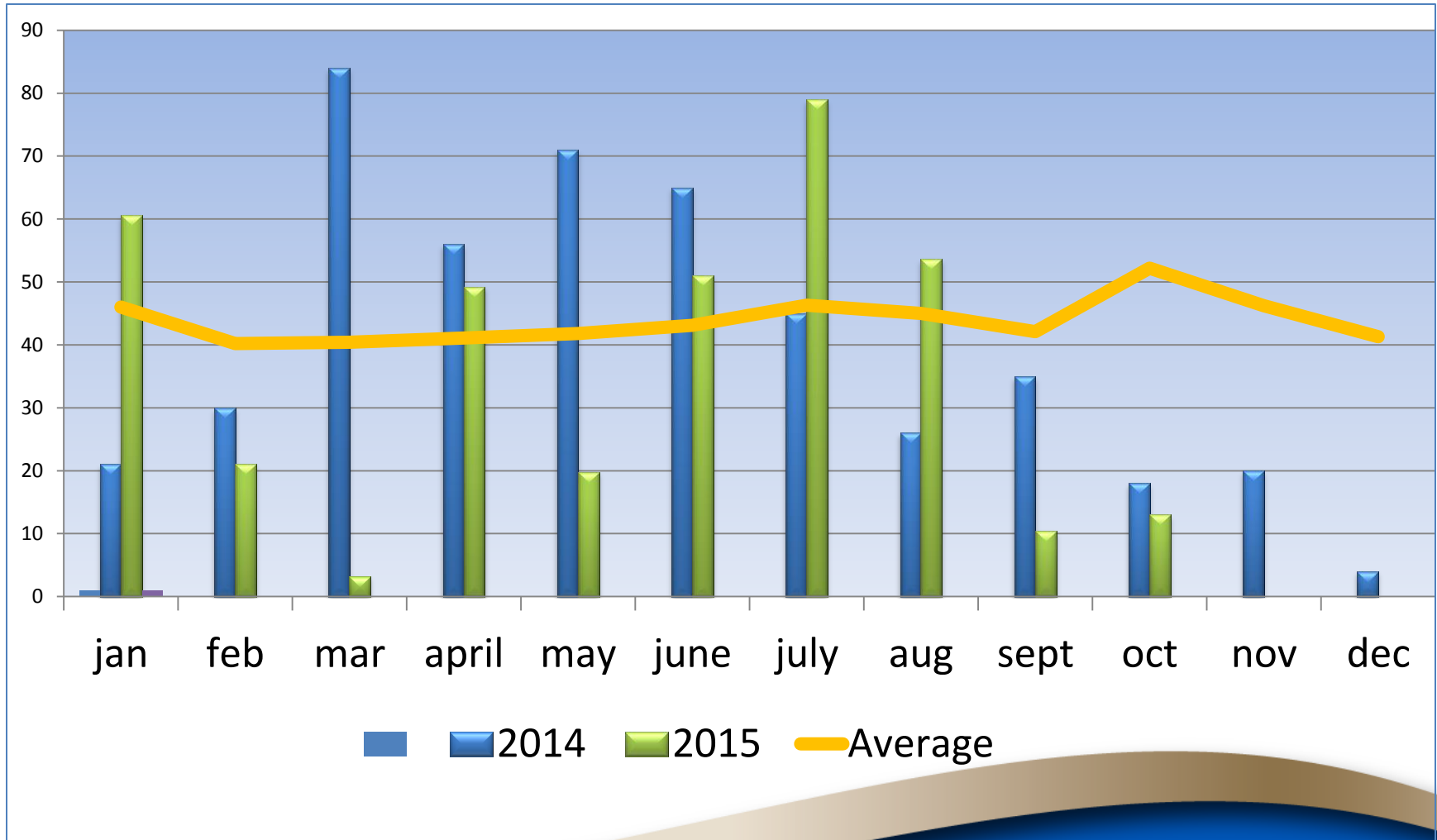
LSD (P=.05) = 0.329 CV = 6.57

Yield vs Oil



LSD (P=.05) = 0.329 CV = 6.57

Temora Research Station - Rainfall



Conclusions

- Maximum N Pact @ 10L/ha had greater yield and Oil than Easy N @ 30 L/ha.
- Max N Pact appears to be an excellent option late in the season for foliar applications.
- Phytotoxicity burn was higher in Easy N than Max N Pact.