

2015 Loveland Agri Products Trial Data

Loveland Products in Canola
Canola - Temora, NSW

Trial Setup

- Fully randomised & replicated plot work – 4 replicates
- Plot size = 10m X 1.76m
- Treatments applied – Awaken, Black Label Zinc, Maximum N Pact, LiFT
- Application Date
 - applied @ seeding – 15th April 2015.
 - applied as a foliar – 15th June 2015.

Planting Date	15th April 2015
Site	Temora Research Station
Variety	505 RR Canola @ 3.0 kg/ha.
Protocol	MAP @ 80 kg/ha + 200 ml/ha Flutriafol 500 @ sowing. Awaken, Black Label Zinc, Maximum N Pact, LiFT
GSP	MAP @ 80kgs/ha Urea @ 100 kgs/ha + Gran-am @ 100kg/ha

Trial Protocol

Treatment #	Treatment	Applied Rate
T1	GSP	0
T2	Maximum N Pact	10 L/ha
T3	Awaken	1.2 L/ha
T4	LiFT	13.7 L/ha
T5	Black Label Zinc	8 L/ha
T6	Awaken + Black Label Zinc	1.2 L/ha + 8 L/ha

Max N Pact : 0-0-49-0 w/w

Awaken : 0-0-5-0 w/v

LiFT : 0-0-32-0 w/v

Black Label Zinc : 8-11.5-0, Zinc 1 w/v

2015 Trial Data

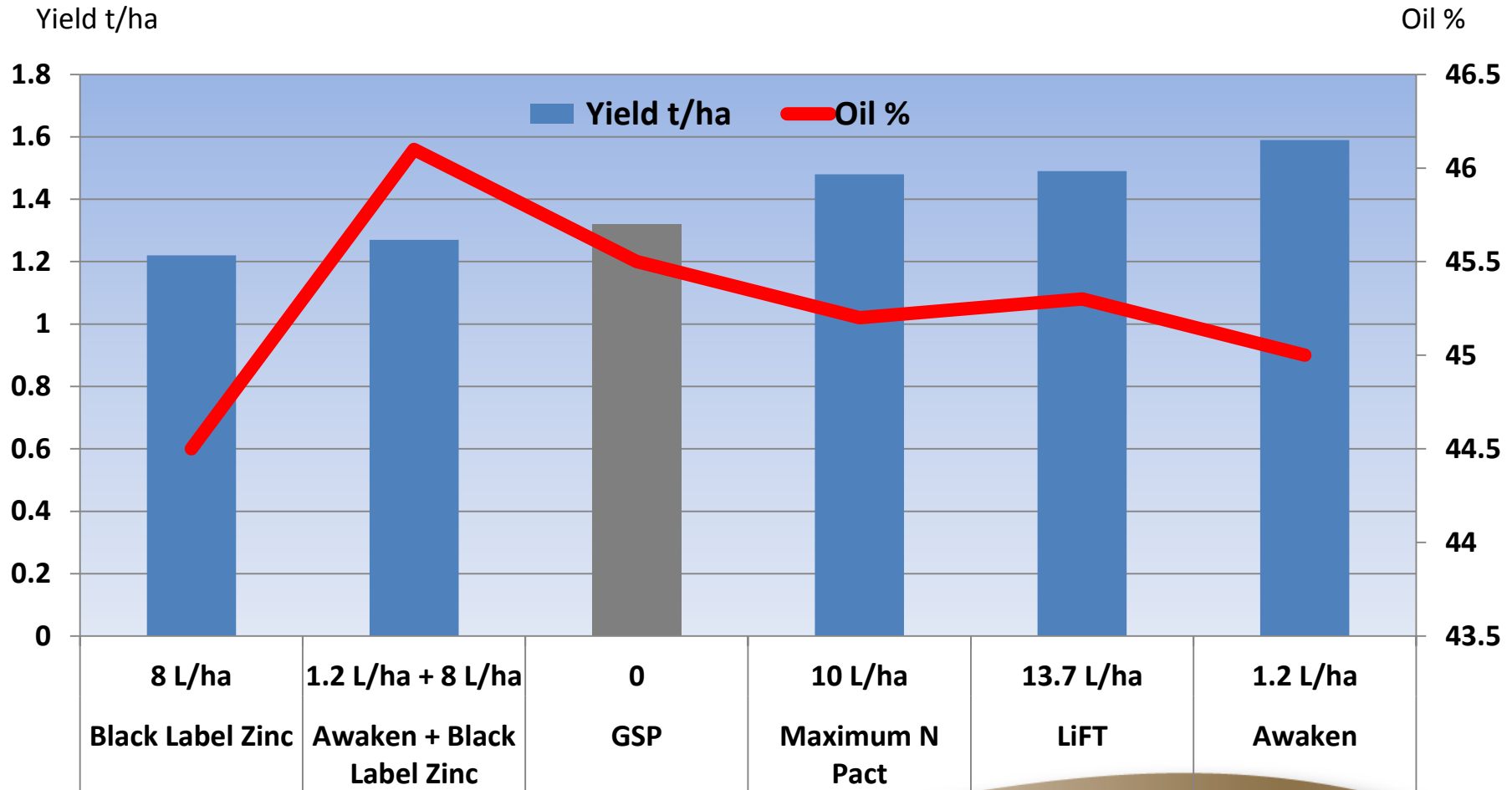
Canola Yield - t/ha

Treatment	Product	Applied Rate	Yield t/ha	Oil %
T1	GSP	0	1.32	45.5
T2	Maximum N Pact	10 L/ha	1.48	45.2
T3	Awaken	1.2 L/ha	1.59	45.0
T4	LiFT	13.7 L/ha	1.49	45.3
T5	Black Label Zinc	8 L/ha	1.22	44.5
T6	Awaken + Black Label Zinc	1.2 L/ha + 8 L/ha	1.27	46.1

LSD (P=.05) = 0.289 CV = 13.7

2015 Trial Data

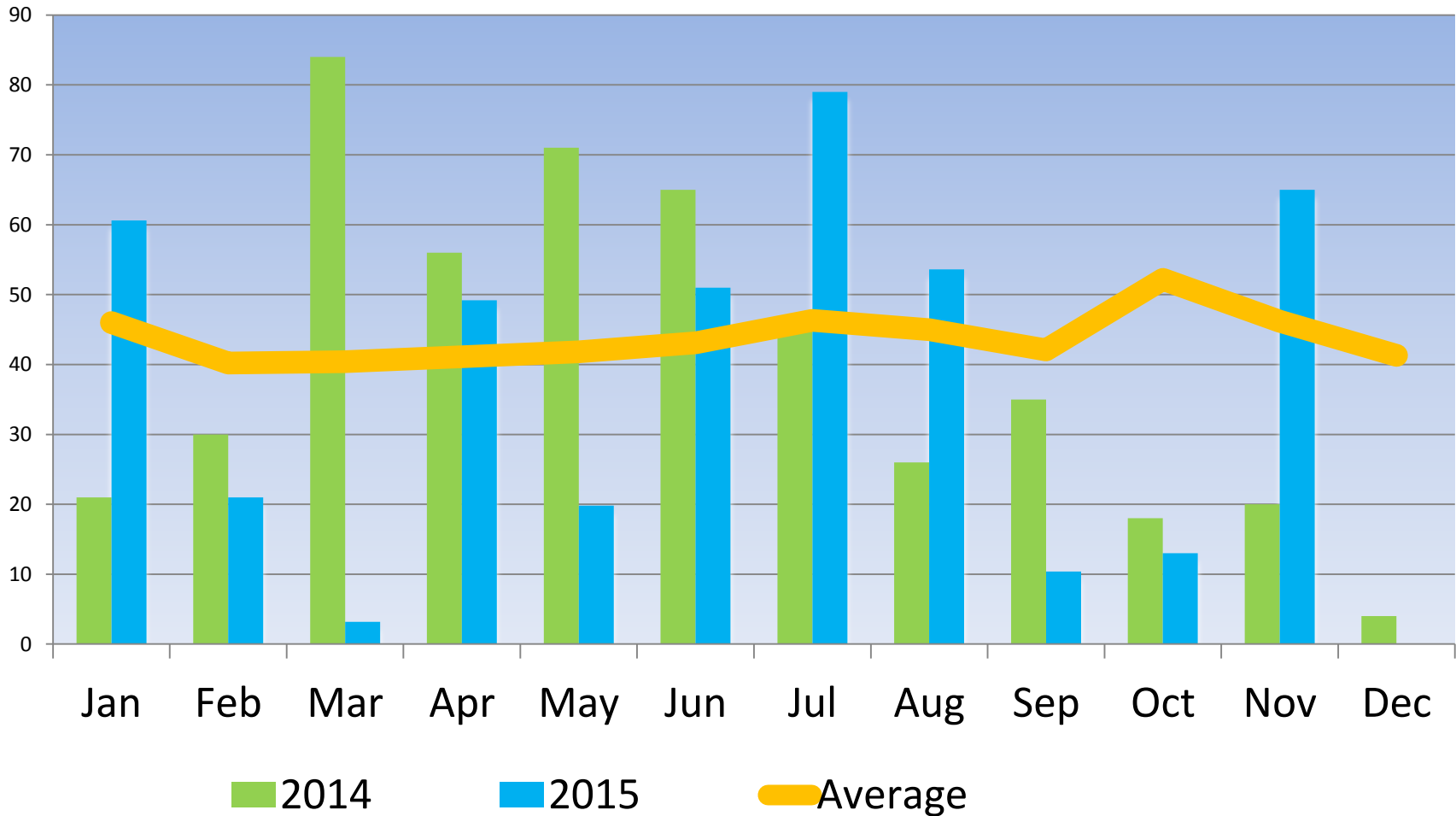
Canola Yield – t/ha



LSD (P=.05) = 0.289 CV = 13.7

2015 Trial Data

Temora Research Station - Rainfall



Conclusions

- Awaken had the highest grain yield.
- Awaken increased yield by 270 kg/ha over GSP.
- Oil was very similar across all treatments.