

2015 Loveland Agri Products Trial Data

Imazapic & Imazapyr (Intervix) +/- Adjuvants

Wheat - Temora, NSW

Lov15_16

Trial Setup

- Fully randomised & replicated plot work – 4 replicates
- Plot size = 10m X 1.7m
- Treatments applied – Hasten, MSO, Liberate, Supercharge & +/- Clopyralid
- Spraying Date – 6th July 2015

Spraying Date	6th July 2015
Site	Temora Research Station
Variety	Elmore Clearfield Wheat @ 65 kg/ha
Protocol	MSO, Hasten, Liberate, Supercharge + / - Clopyralid. Weeds – Barley Grass, Silvergrass, Capeweed, Sub Clover
GSP	Intervix + Supercharge

Trial Protocol

Treatment	Applied Rate
Untreated	----
Intervix + Hasten	700 ml/ha + 1.0% v/v
Intervix + MSO Leci Tech	700 ml/ha + 1.0% v/v
Intervix + Supercharge Elite	700 ml/ha + 0.75% v/v
Intervix + Liberate	700 ml/ha + 0.5% v/v
Intervix + Hasten + Clopyralid 600	700 ml/ha + 1.0% v/v + 150 ml/ha
Intervix + MSO Leci Tech + Clopyralid 600	700 ml/ha + 1.0% v/v + 150 ml/ha
Intervix + Supercharge Elite + Clopyralid 600	700 ml/ha + 0.75% v/v + 150 ml/ha
Intervix + Liberate + Clopyralid 600	700 ml/ha + 0.5% v/v + 150 ml/ha

Intervix - g/kg Imazapic + g/kg Imazapyr

2015 Trial Data

Crop Phytotoxicity %

Treatment	Rate/ha	14 DAA	21 DAA	58 DAA
Untreated	----	0.00	0.00	0.00
Hasten	1.0% v/v	1.25	1.25	0.00
MSO Leci Tech	1.0% v/v	1.25	1.25	0.00
Supercharge Elite	0.75% v/v	0.00	0.00	0.00
Liberate	0.5% v/v	1.25	1.25	0.00
Hasten + Clopyralid 600	1.0% v/v + 150 ml/ha	1.25	1.25	0.00
MSO Leci Tech + Clopyralid 600	1.0% v/v + 150 ml/ha	1.25	1.25	0.00
Supercharge Elite + Clopyralid 600	0.75% v/v + 150 ml/ha	2.50	2.50	0.00
Liberate + Clopyralid 600	0.5% v/v + 150 ml/ha	3.75	3.75	0.00
	LSD (P=.05)	3.160	3.160	0.000
	CV	155.88	155.88	0.0

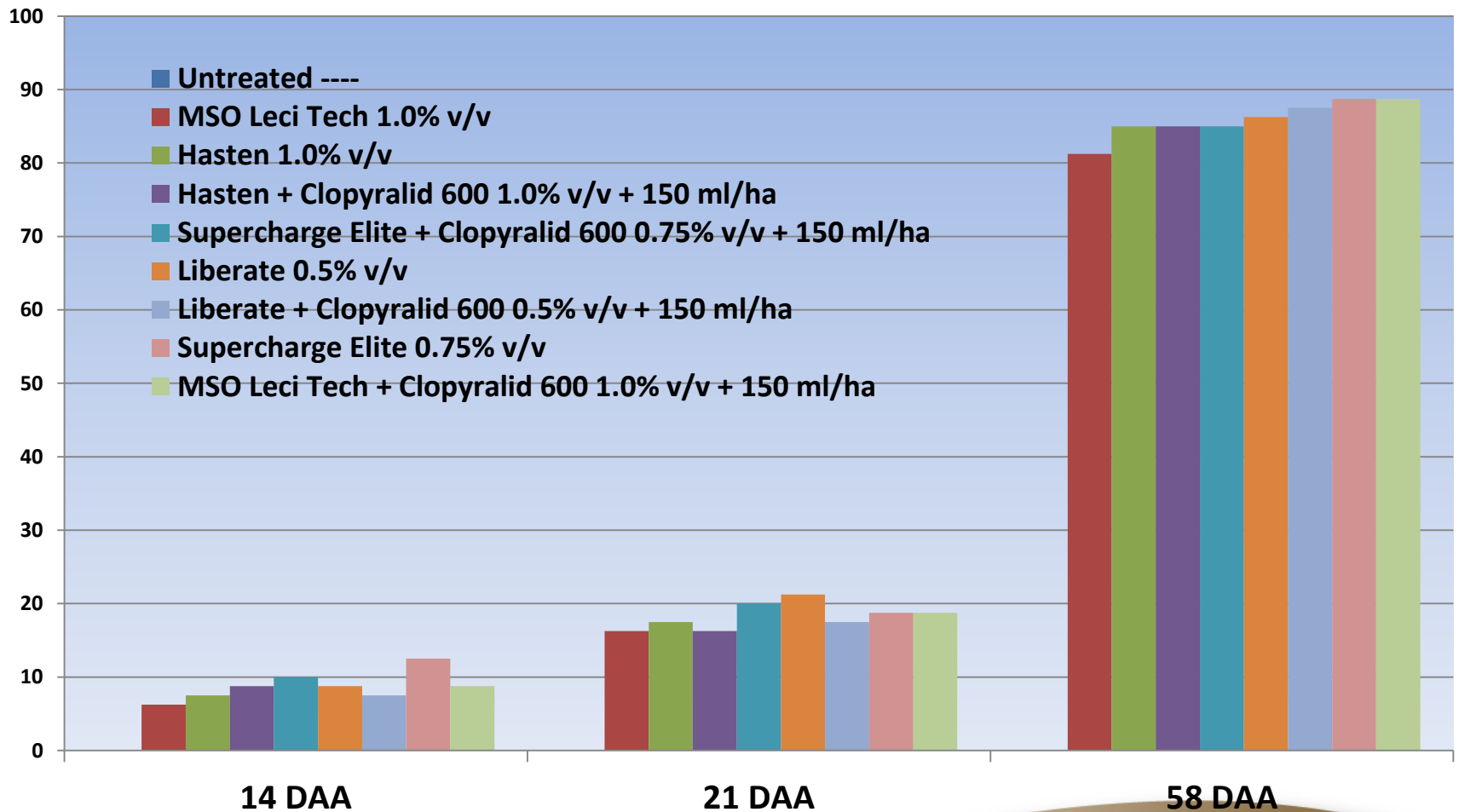
Crop Biomass Reduction %

Treatment	Rate/ha	14 DAA	21 DAA	58 DAA
Untreated	----	0.00	0.00	0.00
Hasten	1.0% v/v	2.50	2.50	0.00
MSO Leci Tech	1.0% v/v	0.00	0.00	0.00
Supercharge Elite	0.75% v/v	2.50	2.50	0.00
Liberate	0.5% v/v	1.25	1.25	0.00
Hasten + Clopyralid 600	1.0% v/v + 150 ml/ha	1.25	1.25	0.00
MSO Leci Tech + Clopyralid 600	1.0% v/v + 150 ml/ha	1.25	1.25	0.00
Supercharge Elite + Clopyralid 600	0.75% v/v + 150 ml/ha	0.00	0.00	0.00
Liberate + Clopyralid 600	0.5% v/v + 150 ml/ha	2.50	2.50	0.00
	LSD (P=.05)	3.312	3.312	0.000
	CV	181.56	181.56	0.0

Control % - ARG

Treatment	Rate/ha	14 DAA	21 DAA	58 DAA
Untreated	----	0.00	0.00	0.00
Hasten	1.0% v/v	7.50	17.50	85.00
MSO Leci Tech	1.0% v/v	6.25	16.25	81.25
Supercharge Elite	0.75% v/v	12.50	18.75	88.75
Liberate	0.5% v/v	8.75	21.25	86.25
Hasten + Clopyralid 600	1.0% v/v + 150 ml/ha	8.75	16.25	85.00
MSO Leci Tech + Clopyralid 600	1.0% v/v + 150 ml/ha	8.75	18.75	88.75
Supercharge Elite + Clopyralid 600	0.75% v/v + 150 ml/ha	10.00	20.00	85.00
Liberate + Clopyralid 600	0.5% v/v + 150 ml/ha	7.50	17.50	87.50
	LSD (P=.05)	4.965	7.293	8.951
	CV	43.74	27.13	8.03

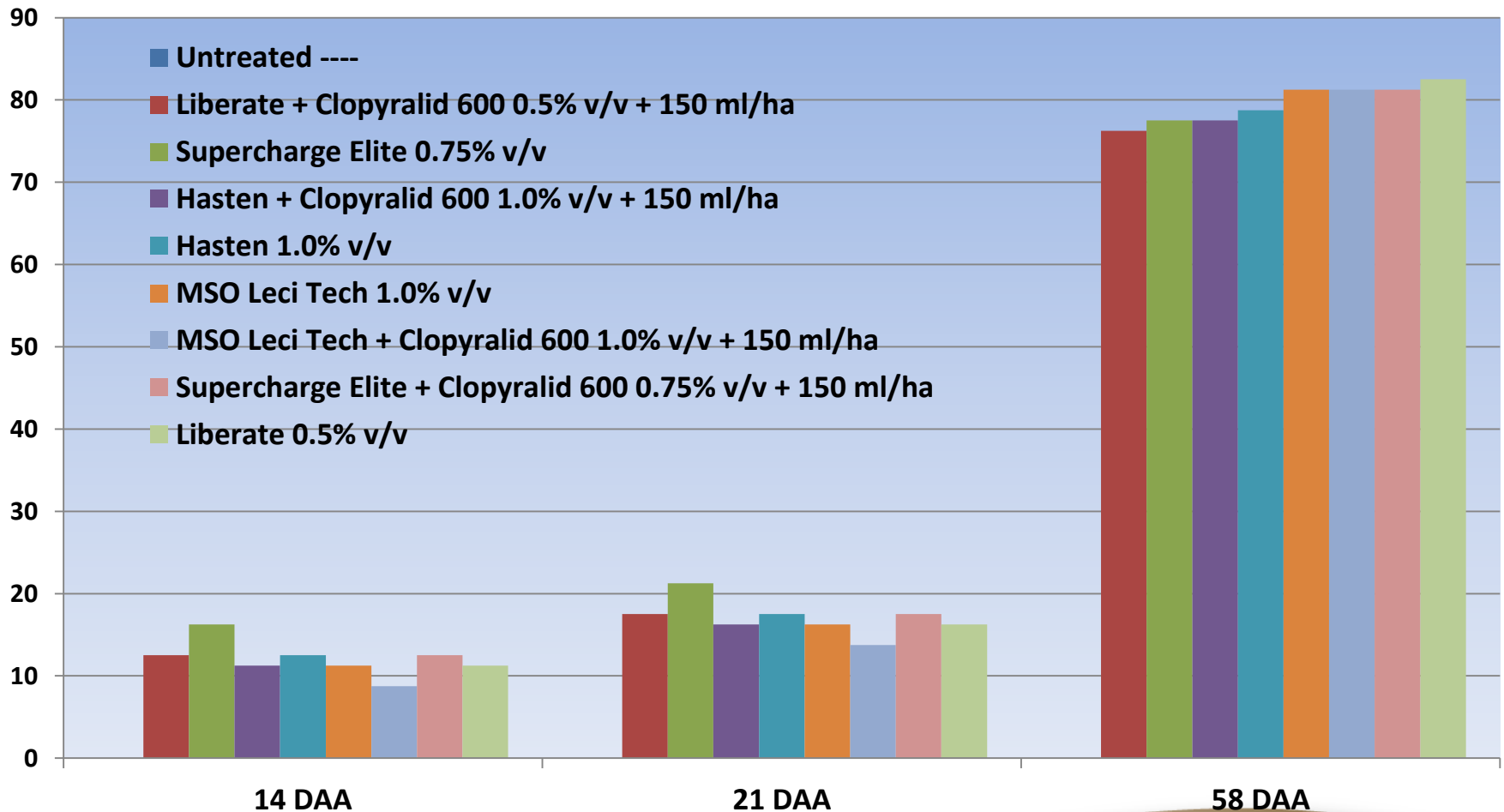
Control % - ARG



Control % - Lupin

Treatment	Rate/ha	14 DAA	21 DAA	58 DAA
Untreated	----	0.00	0.00	0.00
Hasten	1.0% v/v	12.50	17.50	78.75
MSO Leci Tech	1.0% v/v	11.25	16.25	81.25
Supercharge Elite	0.75% v/v	16.25	21.25	77.50
Liberate	0.5% v/v	11.25	16.25	82.50
Hasten + Clopyralid 600	1.0% v/v + 150 ml/ha	11.25	16.25	77.50
MSO Leci Tech + Clopyralid 600	1.0% v/v + 150 ml/ha	8.75	13.75	81.25
Supercharge Elite + Clopyralid 600	0.75% v/v + 150 ml/ha	12.50	17.50	81.25
Liberate + Clopyralid 600	0.5% v/v + 150 ml/ha	12.50	17.50	76.25
	LSD (P=.05)	5.573	5.930	9.577
	CV	35.71	23.67	9.28

Control % - Lupin

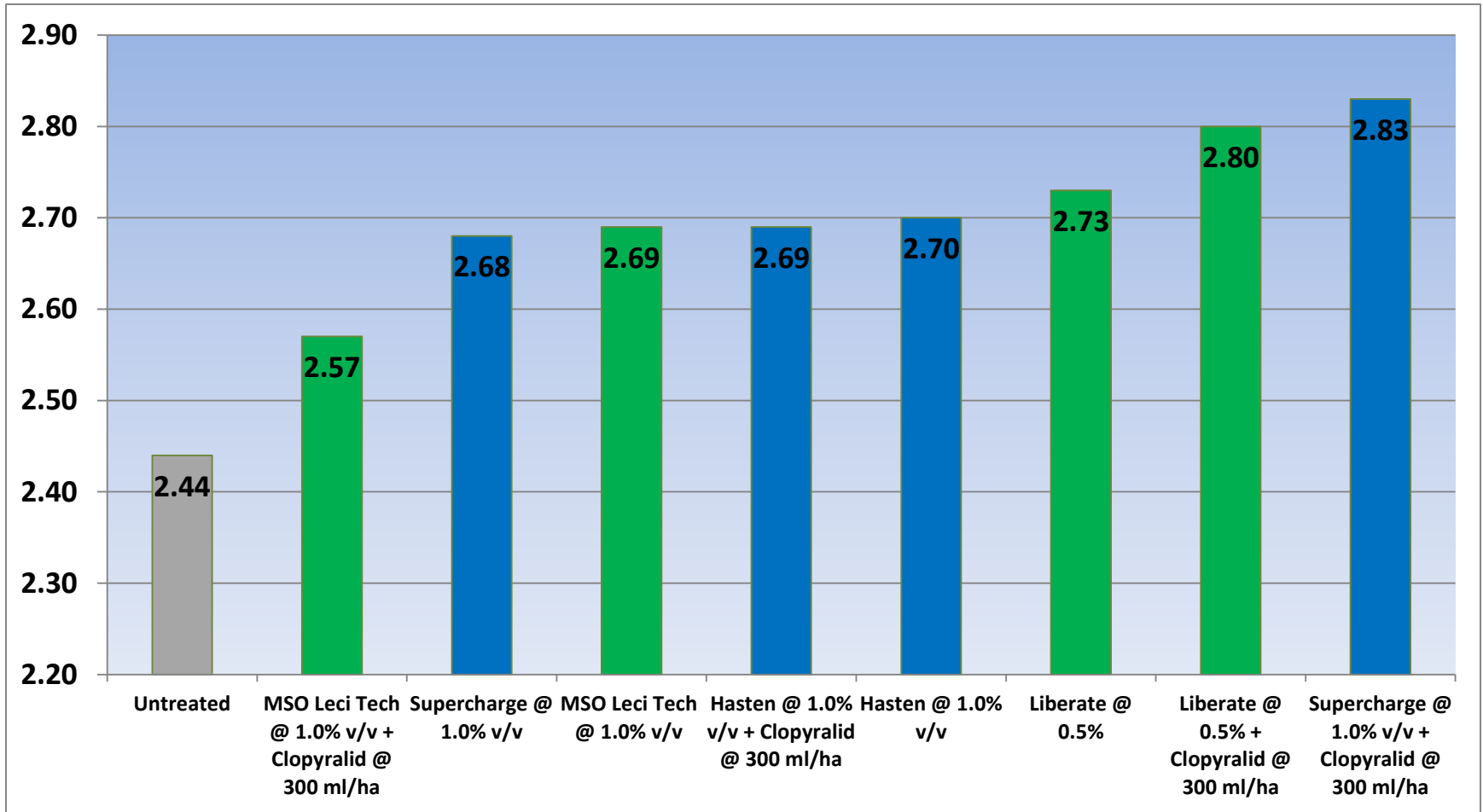


Wheat Yield – t/ha

Treatment	Treatment	Applied Rate	Yield t/ha
T1	Untreated	----	2.44
T2	Hasten	1.0% v/v	2.70
T3	MSO Leci Tech	1.0% v/v	2.69
T4	Supercharge Elite	0.75% v/v	2.68
T5	Liberate	0.5% v/v	2.73
T6	Hasten + Clopyralid 600	1.0% v/v + 150 ml/ha	2.69
T7	MSO Leci Tech + Clopyralid 600	1.0% v/v + 150 ml/ha	2.57
T8	Supercharge Elite + Clopyralid 600	0.75% v/v + 150 ml/ha	2.83
T9	Liberate + Clopyralid 600	0.5% v/v + 150 ml/ha	2.80

LSD (P=.05) = 0.329 CV = 8.41

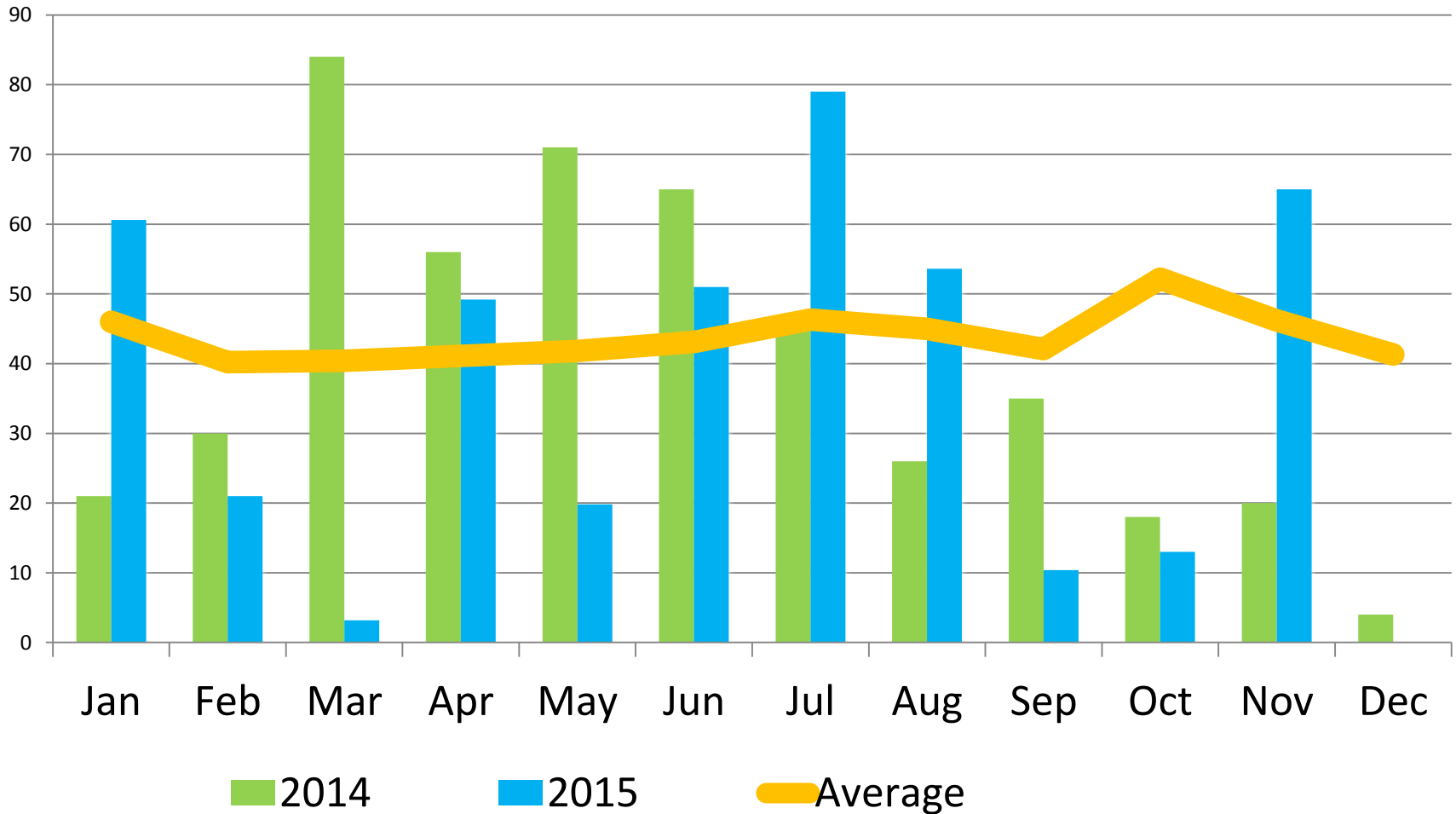
Wheat Yield - t/ha



LSD (P=.05) = 0.329 CV = 8.41

2015 Trial Data

Temora Research Station - Rainfall



Conclusions

- Low levels of Phytotoxicity observed.
- Biomass reduction minimal.
- Liberate performed similar to Supercharge for ARG control.
- Supercharge had slightly faster brownout on Lupins, but Liberate had a higher rating @ 59DAA.