

2014 Loveland Agri Products Trial Data

Basis Trial - Canola
Callington, SA

Trial Setup

- Fully randomised & replicated plot work – 16 replicates
- Plot size = 10 m X 1.65 m

Planting date	15/05/2014
Site	Callington
Variety	Bonito TT @ 3 kg/ha
GSP	MAP 100 kg/ha + SOA 175 kg/ha + Urea 100 kg/ha

Trial Protocol

Treatment	Rate/ha	Timing
Nil Fertiliser	----	----
MAP (GSP)	100 kg	Planting
GSP + Basis	100 kg + 4 L/T	Planting

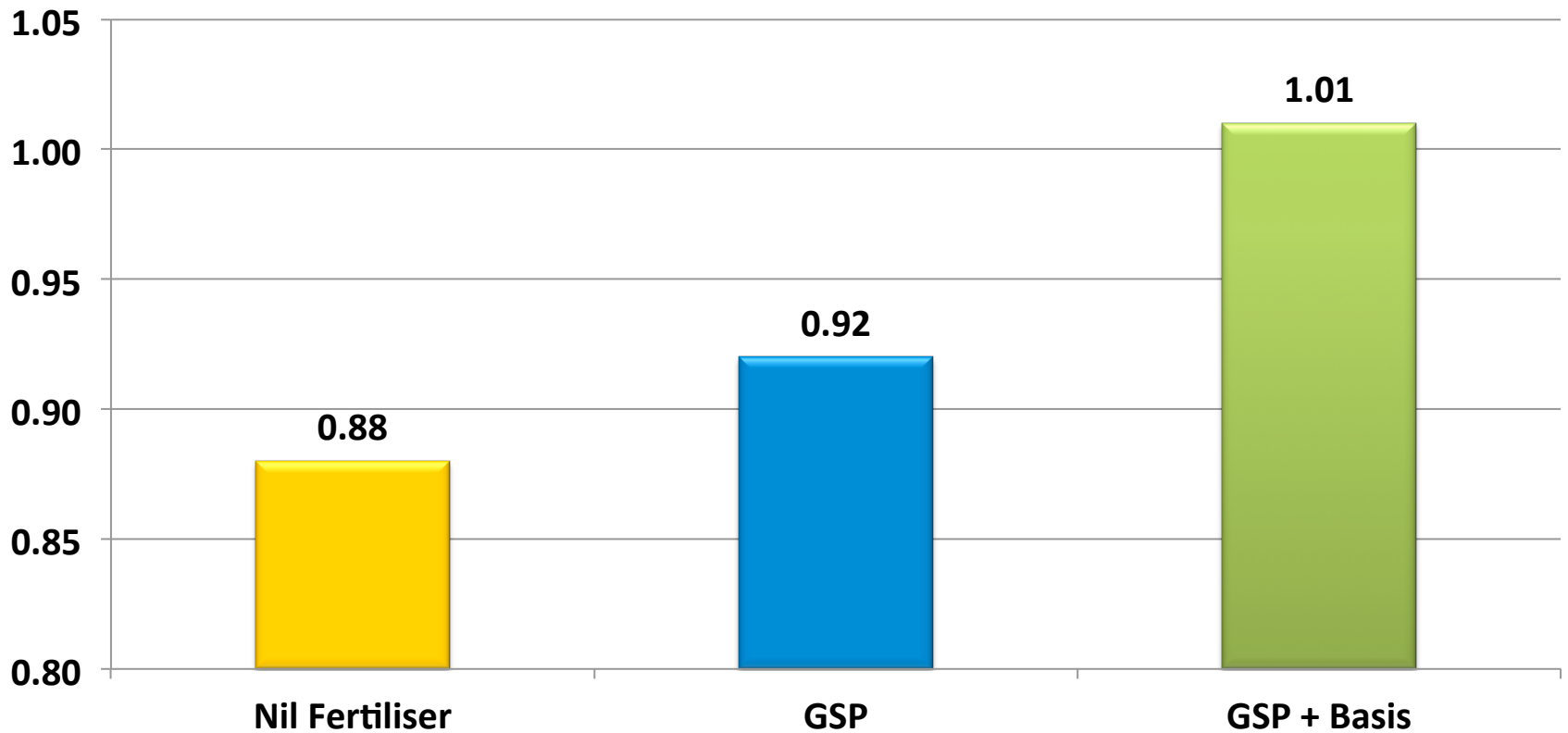
Basis: 3-0-0 w/v

Canola Yield - T/ha

Treatment	Rate/ha	Yield T/ha	Oil %
Nil Fertiliser	----	0.88	44.3
MAP (GSP)	100 kg	0.92	43.6
GSP + Basis	100 kg + 4 L/T	1.01	45.5

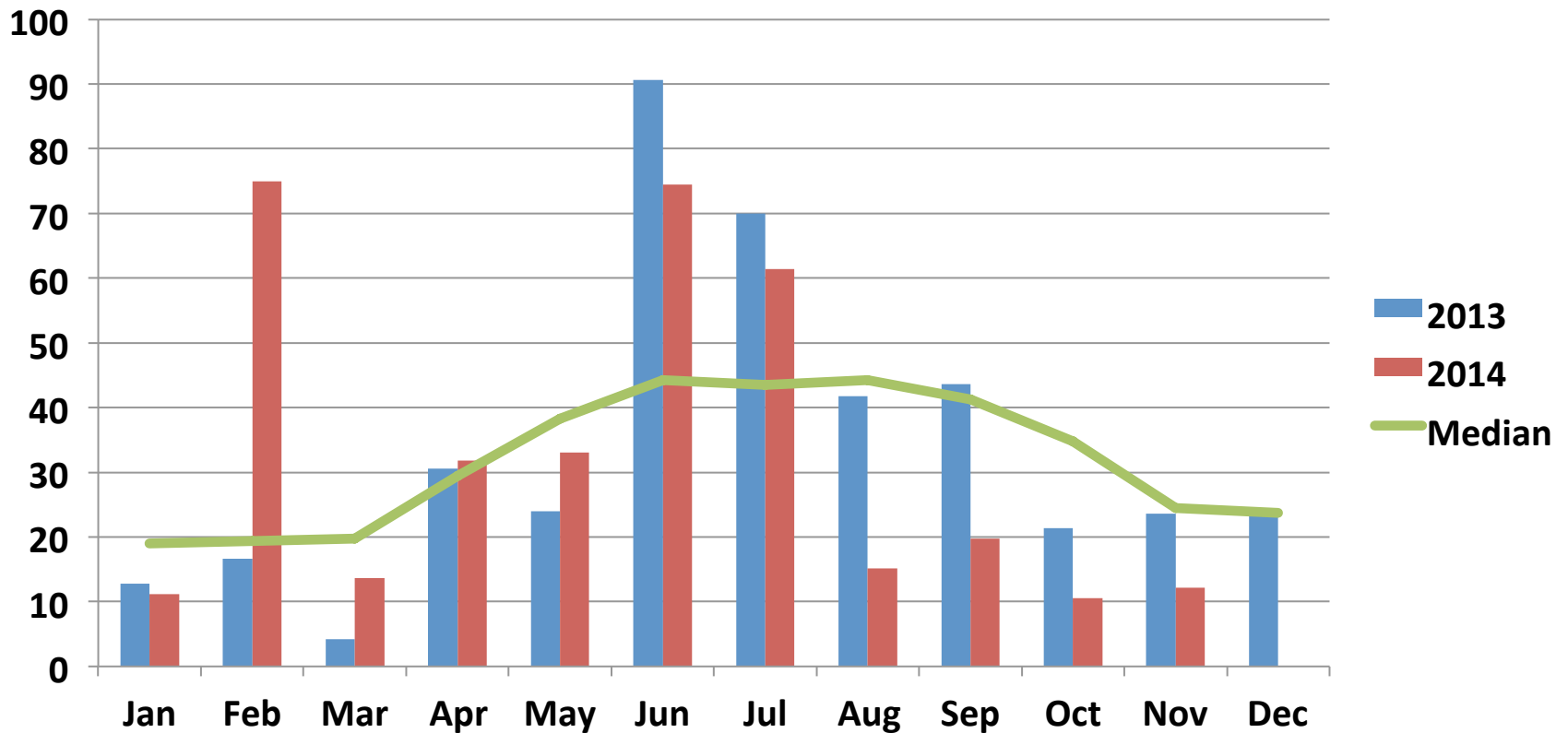
LSD (P=.05) = 0.028 CV = 13.3

Canola Yield - T/Ha



LSD (P=.05) = 0.028 CV = 13.3

Callington – Rainfall (mm)



Conclusions

- The addition of Basis to MAP in this trial provided a significant difference compared to the untreated.
- Yield was impacted by seasonal conditions and vermin.
- Basis treated fertiliser provided a positive yield trend compared to the GSP.
- Basis treated fertiliser provided a positive oil % increase compared to the GSP.